



# AL SEWAGE/EFFLUENT SUBMERSIBLE PUMPS

## FEATURE

- Equipped with Auto-cut, silicon carbide double mechanical seal, epoxy cable base treatment.
- Pump Water Resistance can reach IP68 Grade.
- Entire cast iron structure and compact design.
- High head and efficiency for wide range design.
- 7½HP and 10HP Triangular Handle design, for easy handling on guide rail system.



50AL21.5  
50AL22.2

80AL21.5  
80AL22.2  
80AL23.7A

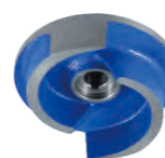
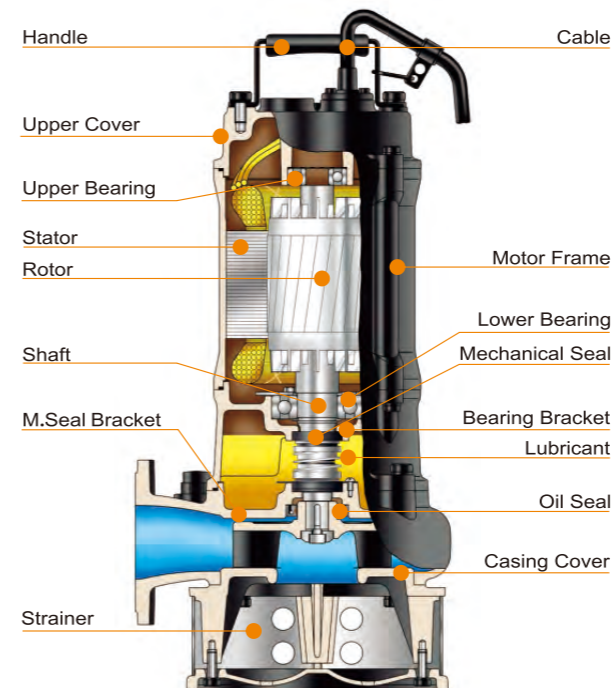
80(100)AL25.5  
80(100)AL27.5

## APPLICATIONS

- Waste water drainage for all industries.
- Pumping surface water, drainage water and flood water.
- Extraction of water from river and lake.
- Pressure - Reducing Design.

## PRODUCT NOMENCLATURE

80	AL	2	1.5
Discharge mm	Type	Pole	kW



50AL21.5

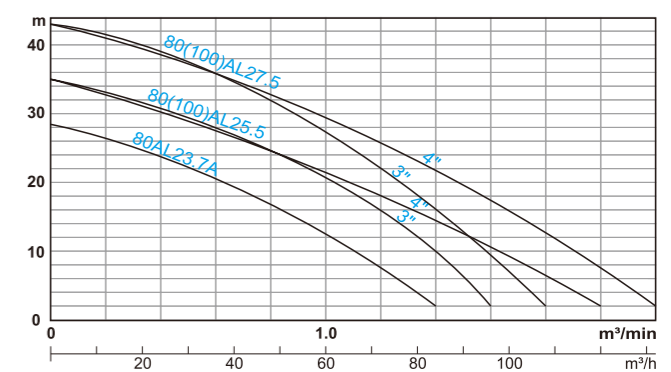
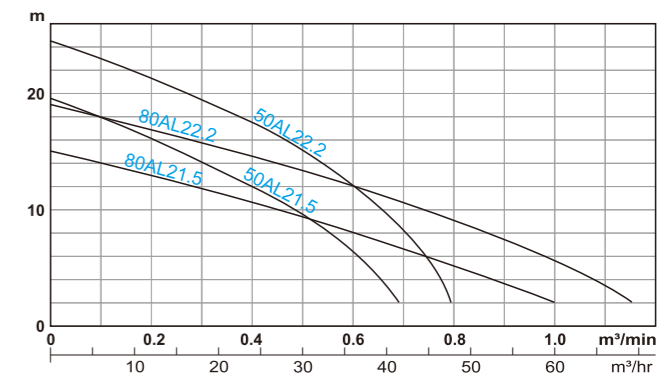


80AL21.5  
80AL22.2

## SPECIFICATIONS

Discharge (mm)		50 • 80 • 100
Limits Of Use	Liquid Temp.	0~40°C (32~104°F)
	Applications	Wastewater Sewage and Drainage water
	Submersion Depth	30m (100feet)
Type	Frequency	50Hz
	Motor	2P (3000RPM) • Dry Motor
	Insulation	Class B(2~3HP) • Class F(5~10HP)
	Protection	IP68
	Protector	Auto-cut
	Bearing	Ball Type
Material	M.seal	Double M.seals
	Impeller	Semi-open
	Upper Cover	FC-200
	Motor Frame	FC-200
	Shaft End	SUS403(2~5HP) • SUS420J2(7.5~10HP)
	M.seal	Upper: Carbon/Ceramic Lower: Silicon/Silicon
	Casing	FC-200
Impeller	FC-200	
Cable	VCT or H07RN-F or SJOW/SOW	
Optional	Pumps can be customized to fit specifications	

## PERFORMANCE CURVES



## PERFORMANCE SPEC.

Model	Output HP(kW)	Size DN Inch(mm)	Phase Ø	Start Method	Head (m)	Capacity		Solid Passage (mm)	Weight (kg)		Dimension (mm)				
						m³/min	m³/h		1Ø	3Ø	A	B	C	1Ø	3Ø
50AL21.5	2 (1.5)	2" (50)	1	Capacitor	12	0.4	24	20	35	31	279	-	206	565	514
				Direct											
50AL22.2	3 (2.2)	2" (50)	3	Capacitor	17.5	0.4	24	20	38	34	279	-	206	598	514
				Direct											
80AL21.5	2 (1.5)	3" (80)	1	Capacitor	8	0.6	36	20	37	32	385	247	207	575	524
				Direct											
80AL22.2	3 (2.2)	3" (80)	1	Capacitor	12	0.6	36	20	39	35	385	247	207	608	524
				Direct											
80AL23.7A	5 (3.7)	3" (80)	3	Direct	20.5	0.6	36	20	-	49	473	278	242	-	578
80(100)AL25.5	7½ (5.5)	4" (100)	3	Direct	28	0.6	36	20	-	75	537	342	283	-	689
					21.5	1.0	60	565	-	-	-				
					36	0.6	36	537	342	283	-	689			
80(100)AL27.5	10 (7.5)	3" (80)	3	Direct	36	0.6	36	20	-	81	537	342	283	-	689
					29.5	1.0	60	565	-	-	-				

Note: Weight Without Cable & Elbow Set

