

Boxer 7

Specifications and types



Zone 2 – Zone 22
Zone 1 – Zone 21
Zone M2

II 3G Ex h IIB T4 Gc e II 3D Ex h IIB T135°C Dc X
II 2G Ex h IIB T4 Gb e II 2D Ex h IIB T135°C Db X
I M2 Ex h I Mb X*

Ex h IIB T4 Gb e Ex h IIB T135°C Db

* The string relating to mining applications is not applicable to aluminium BOXER range pumps

Suction / delivery connections	1/4" f BSPP(*)
Air fitting	1/8" f BSPP
Max. flow rate*	9 l/min
Max. supply air pressure	8 bar
Max. head*	80 m
Max negative suction head - dry-running**	4 m
Max negative suction head - with pump primed	9,5 m
Max. diameter suspended solids	0,5 mm
Noise	65 dB

(*) NPT fittings only on request

* The curves and the performances refer to pumps with immersed suction and open delivery outlet, with water at 20°C and vary depending on material composition.

** The value depends on the pump configuration.



PLASTIC MATERIAL - PP (GF/CF)

Boxer 7



Maximum dimensions

Height	120 mm
Width	137 mm
Depth	69 mm



Construction mat. (casing and manifolds) and net weight

POLYPROPYLENE (with glass additive)	0,7 Kg Temp. 3°C min. 65°C max
CONDUCTIVE POLYPROPYLENE (with carbon additive)	0,7 Kg Temp. 3°C min. 65°C max

PLASTIC MATERIAL - PVDF

Boxer 7



Maximum dimensions

Height	120 mm
Width	137 mm
Depth	70 mm



Construction mat. (casing and manifolds) and net weight

PVDF (with carbon additive)	0,7 Kg Temp. 3°C min. 95°C max
---------------------------------------	--------------------------------------

Boxer 7



Specifications and types

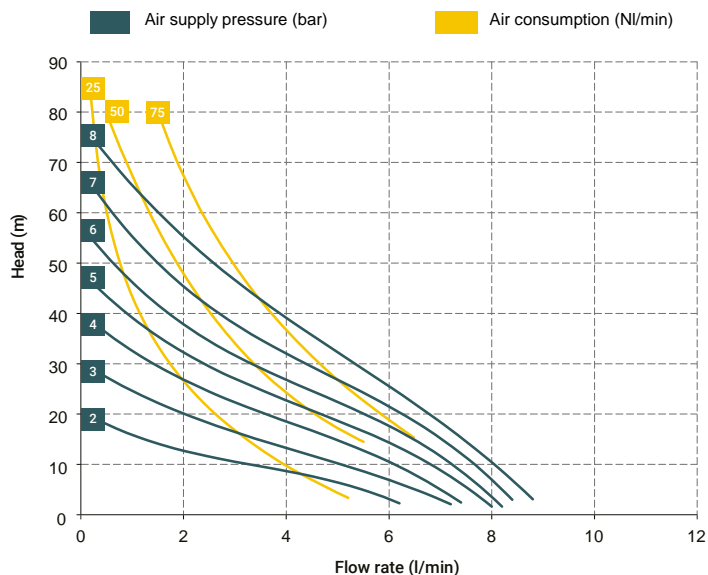


Zone 2 - Zone 22
Zone 1 - Zone 21
Zone M2

II 3G Ex h IIB T4 Gc e II 3D Ex h IIB T135°C Dc X
II 2G Ex h IIB T4 Gb e II 2D Ex h IIB T135°C Db X
I M2 Ex h I Mb X*

Ex h IIB T4 Gb e Ex h IIB T135°C Db

* The string relating to mining applications is not applicable to aluminium BOXER range pumps



* The curves and performances refer to pumps with immersed suction and open delivery outlet with water at 20 °C and vary according to the composition materials.

T10 distributor material (compressed air circuit)

- POM

Core material

- Polypropylene (with glass filler)
- Conductive polypropylene (with carbon filler)

Diaphragm materials

- PTFE
- NBR

Cap materials

- Polypropylene (with glass filler)
- Conductive polypropylene (with carbon filler)
- PVDF

Ball materials

- PTFE
- AISI 316 L
- EPDM

O-ring materials

- EPDM
- NBR
- VITON®
- PTFE

Packaging

Cardboard box - 14 x 19 x 14 cm - weight 0.17 kg
(the weight refers only to the packaging without the pump inside)

Accessories

- Equافلux 51 (For damper materials, please refer to the technical data sheet)
- Air regulation kit W1000-8-G

BOXER 07 (PP):

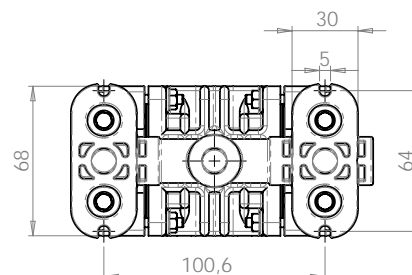
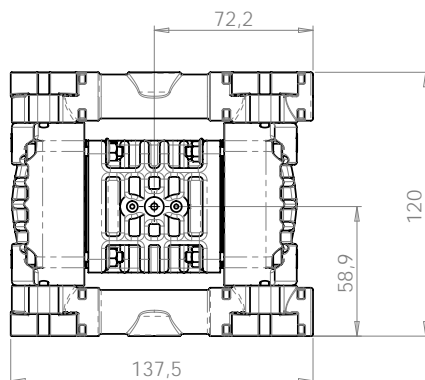
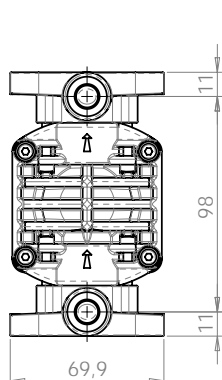
A1 - A2 - A4 - M1 - M2- M4

BOXER 07 (PVDF):

A1 - A2 - A4 - M1 - M2- M4

Standard fittings:

- Suction: A1
- Delivery: M1



Boxer 7



Specifications and types



Zone 2 – Zone 22 II 3G Ex h IIB T4 Gc e II 3D Ex h IIIB T135°C Dc X
 Zone 1 – Zone 21 II 2G Ex h IIB T4 Gb e II 2D Ex h IIIB T135°C Db X
 Zone M2 I M2 Ex h I Mb X*
 Ex h IIB T4 Gb e Ex h IIIB T135°C Db

* The string relating to mining applications is not applicable to aluminium BOXER range pumps

BOXER PUMPS CODES ENCODING

ex. IB07-P-HTTPV--
 Internal distributor, Boxer 07, body PP, air-side diaph. Hytrel®, product-side diaph. PTFE, AISI 316 L balls, PP ball seats, EPDM O-Ring.

IB07-	P	H	T	T	P	V	-	-
PUMP MODEL	PUMP BODY	AIR-SIDE DIAPHRAGM	FLUID-SIDE DIAPHRAGM	BALLS	BALL SEATS	O-RING	MANIFOLD	VERSION
IB07 - Boxer 07 IB15 - Boxer 15 IMICR - Microboxer IB35 - Boxer 35 IB50 - Boxer 50 IMIN - Miniboxer IB81 - Boxer 81 IB90 - Boxer 90 IB100 - Boxer 100 IB150 - Boxer 150 IB251 - Boxer 251 IB252 - Boxer 252 IB522 - Boxer 522 IB502 - Boxer 502 IB503 - Boxer 503	P - PP PC - PP+CF FC - PVDF+CF A - AISI 316 (L) AL - ALU	N - NBR D - EPDM H - Hytrel® M - Santoprene®	T - PTFE	T - PTFE A - AISI 316 L D - EPDM N - NBR	P - Polypropylene F - PVDF A - AISI 316 L I - PE-UHMW R - PPS L - Aluminium	D - EPDM V - Viton® N - NBR T - PTFE	X* 3* Y* W* K*	C* Z*

Example table, for the table with the complete codes please contact the Debem sales department.



*X = split manifold
 *3 = 3rd hole on the manifold
 *Y = manifold with NPT fitting
 *W = clamp manifold
 *K = manifold with reinforcement rings
 (all on request only)

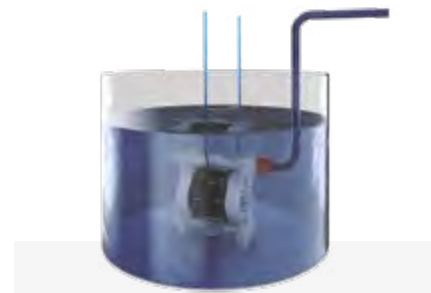
C = CONDUCT version for ATEX ZONE 1
 Z = Version for IECEx Standard



Self priming



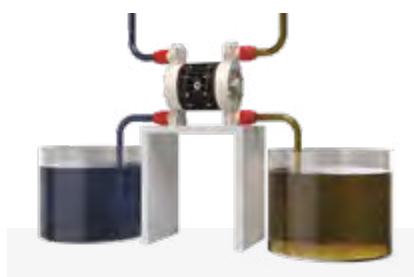
Under head



Immersed



Drum Transfer



Split Suction



Split Suction and Delivery