



CASTLE PUMPS LTD

Your process delivered.

The UK Agent of...
azcuepumps



Datasheet

Interchangeable spare parts with other Azcue models to reduce stock holding

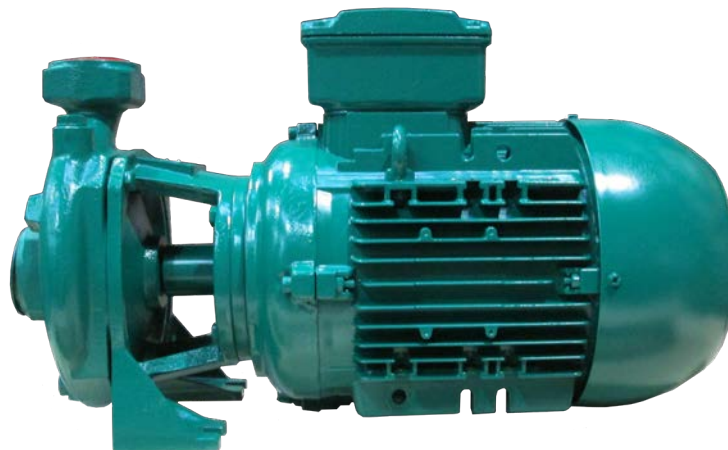
Manufactured in Spain with materials from own foundry

Marine type approved by all classification societies e.g. Lloyds/ABS

Compact design ideal for installations where space saving is an issue.

Bearings **greased for life** with bearing replacement at 35,000 intervals

Separate shafts in pump head & motor - no need to replace entire pump and motor if shaft wears



CP50 (2") upwards have **additional bearing** in the pump head to share the strain of operation and increase robustness

Competitively priced in the market compared to other small centrifugal pumps available

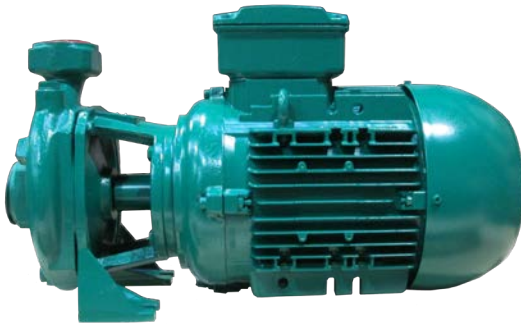
Wearing rings to improve pump efficiency and provide clearance between the casing and impeller, preventing their wear, meaning only the less costly wear rings need replacing

Close coupled with lantern bracket to separate the pump head and motor should the seal fail - prevents fluid from entering the motor

Back pull out design for easy maintenance - allows the internals to be removed without disconnecting the pump from the pipework.

Series **CP** Close Coupled Centrifugal Pump

CP Self Priming Centrifugal Pump

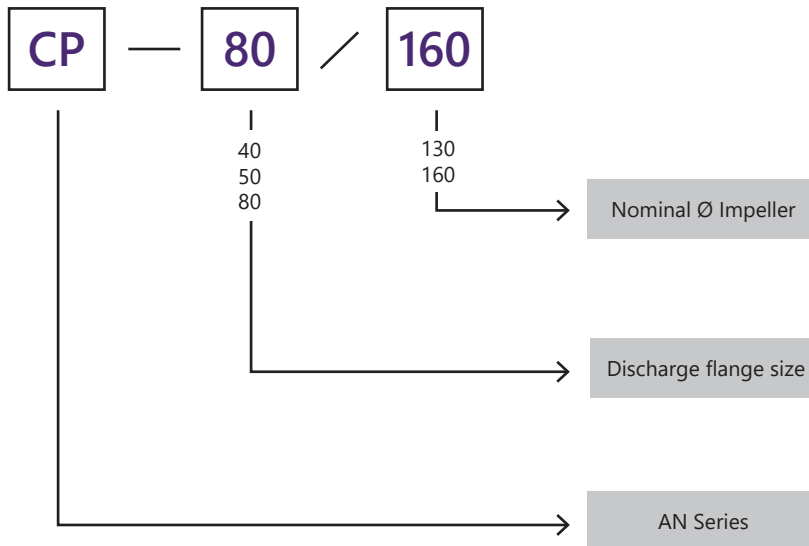


Close coupled version for illustration purposes

Performance:


Max Flow rate	75 m ³ /h
Max Pressure	50 M
Max Temperature	80°C
Sizes Available	1" - 3" Outlet

Description



Close Coupled Centrifugal Pumps

Available options -

- ATEX approved 
- Flanged on request

Common Applications -

- Cooling
- Deck Wash
- Fresh Water
- Fuel Transfer
- Grey Water
- HVAC
- Irrigation
- Lubricant Transfer
- Pressure Boosting
- Sea Water Cooling
- Sea Water Service
- Swimming Pool
- Water Service
- Water Transfer

Benefits -

- Manufactured in Spain by manufacturer with over 100 years' experience, using materials from their own foundry for complete control
- Marine type approved by all classification societies e.g. Lloyds/ABS for independent verification the pump meets quality standards
- Close coupled with a lantern bracket to separate the pump head from the motor, so should the seal fail fluid is prevented from entering the motor and causing damage to this part
- Compact and space saving design making it ideal for installations which have limited space
- Durable for continuous use thanks to additional bearing in the pump head to share the strain of operation, increasing its robustness - CP50 2" upwards only.
- Competitively priced in the market compared to other small centrifugal pumps available in the market
- Interchangeable spare parts with other Azcue models to reduce stock holding required
- Spares available for a minimum of 15 years after model discontinuation for long term servicing even if the pump is no longer produced
- Bearings are greased for life with long service intervals to reduce maintenance costs – bearings replaced at 35,000 hours
- Back pull out design for easy maintenance - allows the motor to be removed without disconnecting the pump
- Wearing rings to improve pump efficiency and provide clearance between the casing and impeller, preventing their wear, meaning only the less costly wear rings need replacing
- Separate shafts in pump head and motor - no need to replace entire pump and motor if shaft wears, saving costs
- ATEX approved version for hazardous environments



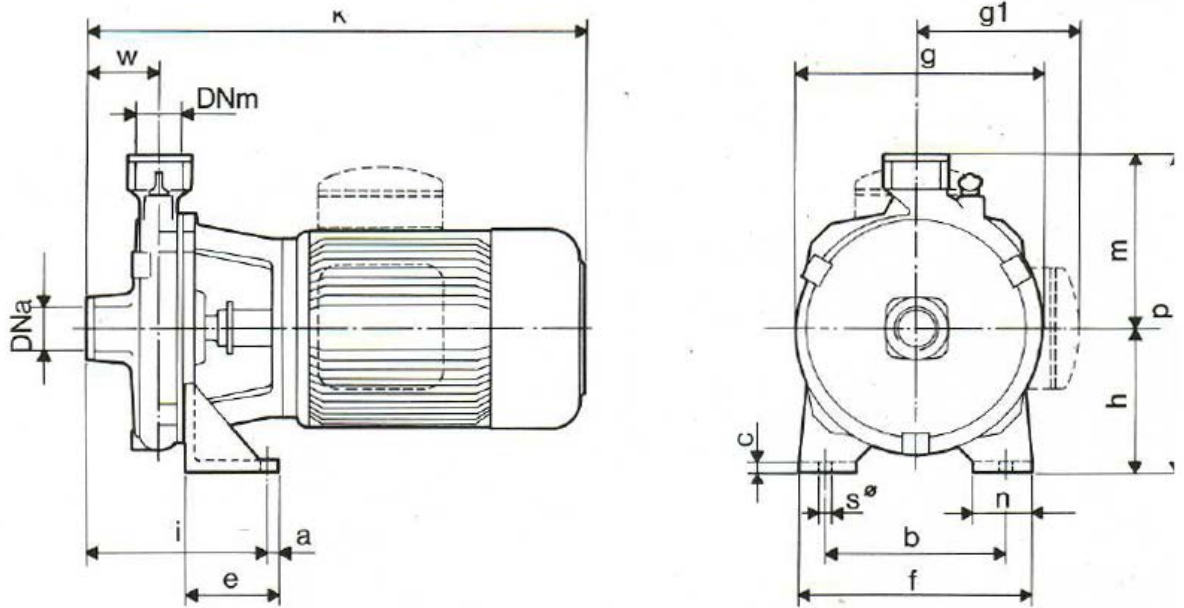
Materials

Pump casing	Bronze G-CusN10	Cast Iron	Stainless Steel (Aisi 316) X5CrNiMO 18 10
Impeller	Bronze G-CusN10	Cast Iron	Stainless Steel (Aisi 316) X5CrNiMO 18 10
Shaft			Stainless Steel (Aisi 316) X5CrNiMO 18 10



Dimensions

CP 40-130/160



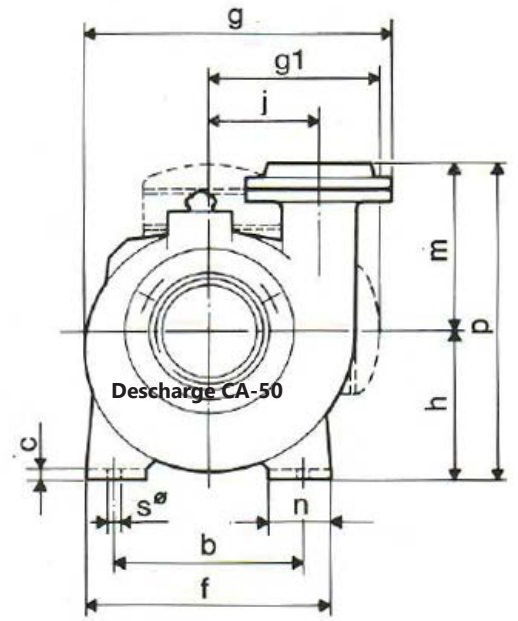
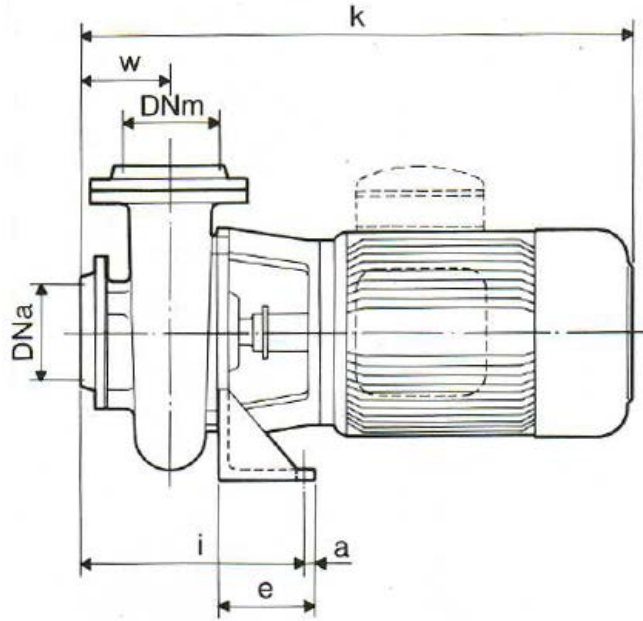
Type CP-40 / 130-160

Type	HP	a	e	i	b	f	n	s	c	h	m	p	DNa	DNm	w	k	g1	g	kg
CP-40-130	1															393	115		19
	1.5	15	70	136	110	150	45	12	10	112	138	250	R. 2"	R. 1½"	53	393	115	180	19
	2															415	152		22
CP-40-160	2															415	152		24
	3	15	70	136	140	180	45	12	10	112	155	267	R. 2"	R. 1½"	53	440	152	200	28
	4															465	152		33



Dimensions

CP 50-130

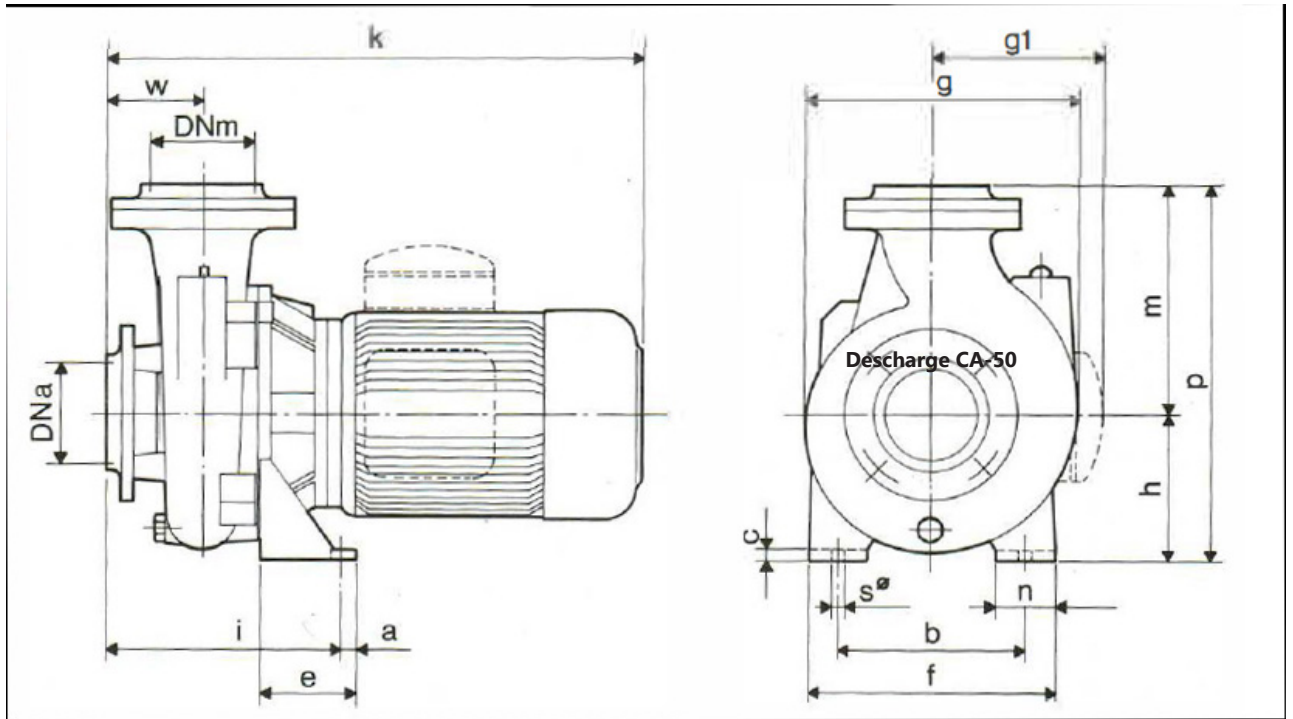


Type	HP	a	e	i	b	f	n	s	c	h	m	p	DNa	DNm	w	k	g1	g	kg
CP-50-130	1															420	115		23
	1.5	15	70	160	110	150	45	12	10	112	123	235	2" G	2" G	64	420	115	235	23
	2															445	155		26
	3															470	155		30
	4															495	165		35



Dimensions

CP 80-130

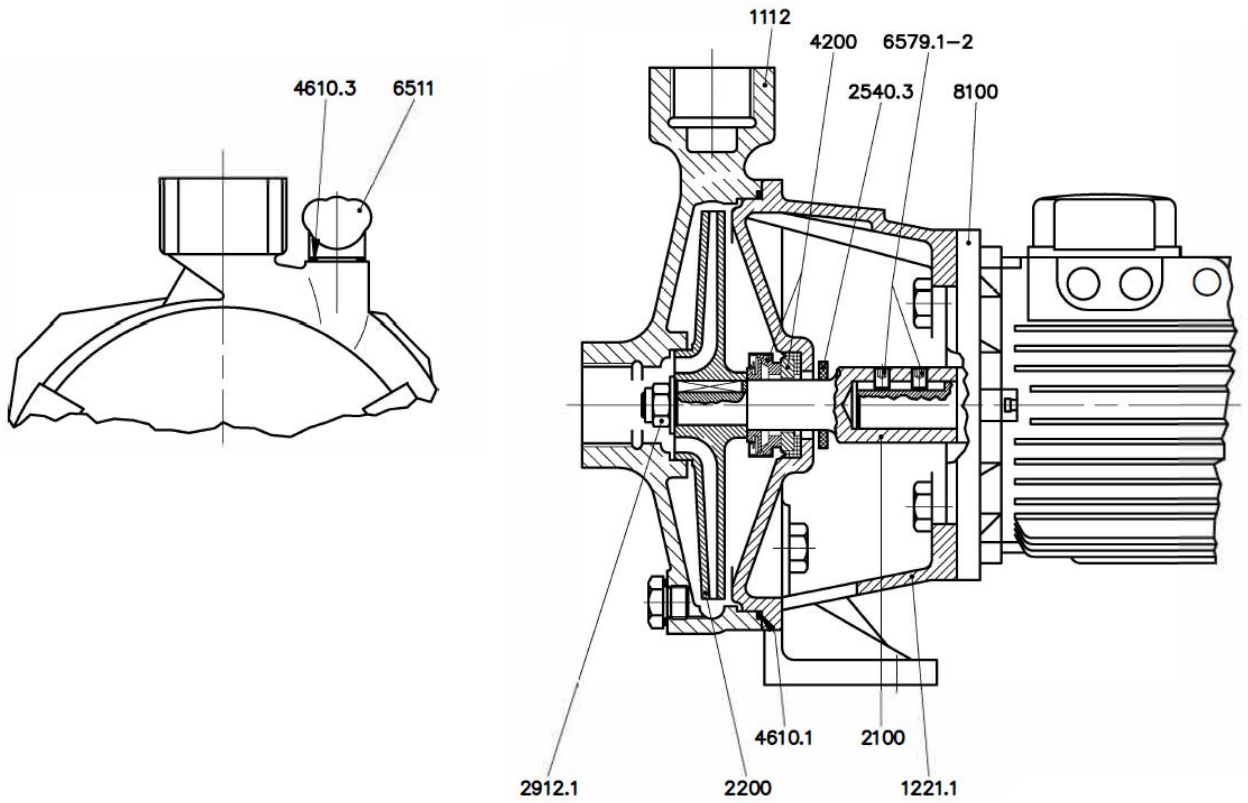


Type	HP	a	e	i	b	f	n	s	c	h	m	p	DNa	DNm	w	k	g1	g	kg
CP-80-130	1.5	15	80	190	160	210	50	12	10	125	198	323	3" G	3" G	77	420	115	227	29
	2															440	155		32
	3															465	155		37
	4															505	165		42



Sectional Drawing

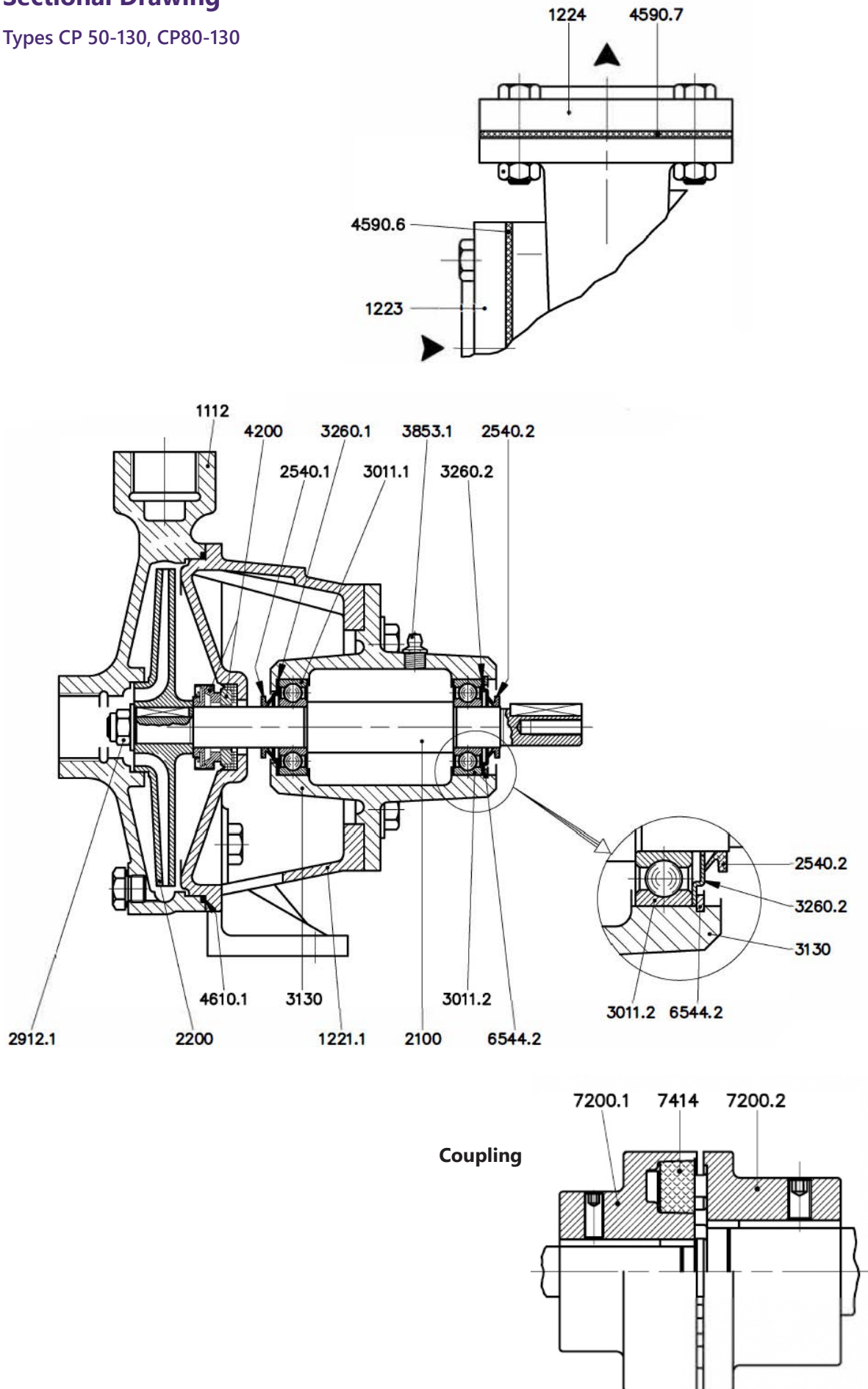
Types CP 40-130/160





Sectional Drawing

Types CP 50-130, CP80-130





Sectional Drawing

Description	Ref.
Pump Casing	1110
Volute Casing	1112
Casing Cover	1221.1
Casing Cover	1221.2
Casing Cover	1221.3
Suction Cover	1223
Discharge Cover	1224
Diffuser	1410
Interstage Plate	1471
Casing Wear Ring	1500.1
Casing Wear Ring	1500.2
Casing Wear Ring	1500.3
Casing Wear Ring	1500.4
Shaft	2100
Impeller	2200
Impeller	2200.2
Impeller	2200.3
Interstage Sleeve	2410
Loose Collar Shoulder Ring	2510
Thrower	2540.1-2
Thrower	2540.3
Thrower	2540.4-5
Impeller Nut	2912.1
Impeller Nut	2912.2
Impeller Nut	2912.3
Radial Ball Bearing	3011.1
Radial Ball Bearing	3011.2
Bearing Bracket	3130
Support Foot	3134
Motor Stool	3160
Foot	3190
Bearing Cover	3260.1-2
Bearing Cover	3260.3-4
Disc Spacer	3645
Grease Nipple	3853.1-2
Oil Filler Plug	3854
Oil Sight Gauge	3856
Mechanical Seal	4200
Mechanical Seal	4200.3
Shaft Seal Ring	4305.1-2
Gasket	4590.1
Gasket	4590.2-3
Gasket	4590.6-7
Gasket	4590.10
Join Ring Circular	4595
O-ring	4610.1
O-ring	4610.2
O-ring	4610.3
O-ring	4610.4
Priming Plug	6511
Drain Plug	6515
Drain Plug	6515.2
Circlip	6544.1
Circlip	6544.2
Circlip	6544.3
Stud	6572
Socket Heat Cap Screw	6579.1-2
Coupling Half	7200.1
Coupling Half	7200.2
Coupling Bush	7414
Motor	8100
Stuffing Box	
Casing Cover	1221.4
Shaft Sleeve	2450
Gland	4120
Gland Packing	4130
Lantern Ring	4134