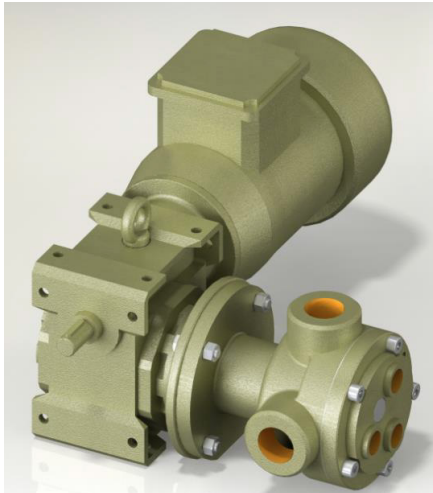




YC 1" Food Grade Internal Eccentric Gear Pump



Performance:

Flow rate	0.25 m ³ /h
Pressure	1 - 5 bar
Temperature	0 - 70 °C
Speed	100 d/d
Viscosity	25000 - 250000 SSU

Technical Features:

- ✓ Internal eccentric gear pump
- ✓ 1" threaded connections
- ✓ Food grade model for hygienic food processing installations
- ✓ Designed for low pressure applications
- ✓ Compact design
- ✓ Reliable construction thanks to only two moving parts
- ✓ Various material options
- ✓ Available with jacketed cover and blind cover
- ✓ 230v, three phase 50/60hz motors available
- ✓ Manufactured according to CE regulations

Applications:

- ✓ Hygienic food processing
- ✓ Chocolate, cream and other dairy products
- ✓ Glucose and glycol
- ✓ Vegetable oil, cocoa butter
- ✓ Sugar syrup, nut butters
- ✓ Starch
- ✓ Any transfer of low to medium viscosity fluids with lubricating properties
- ✓ Not suitable for fluids containing abrasive particles

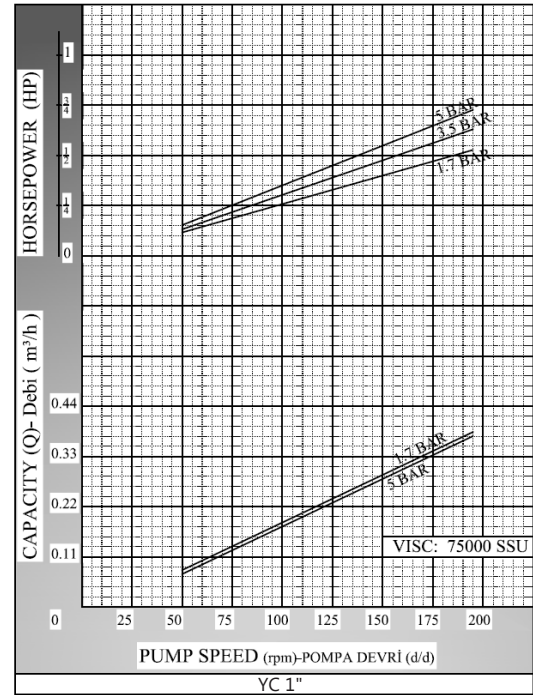
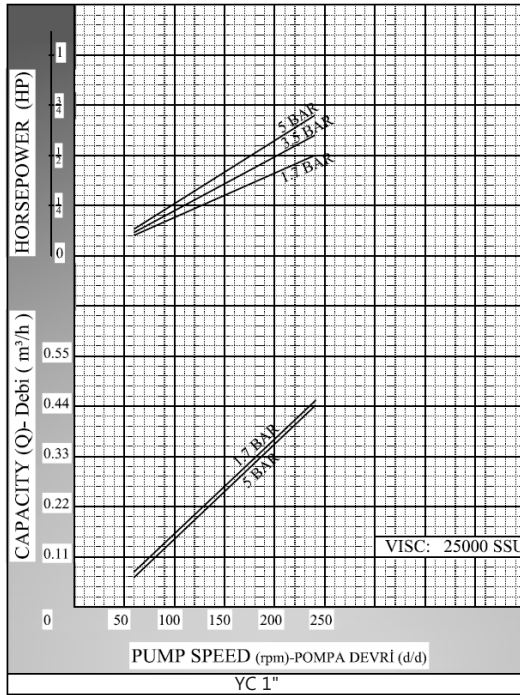
Material Options:

- ✓ Pump body, covers: Cast iron, steel cast, stainless AISI 304/316 CrNi cast
- ✓ Gears: Cast iron, steel cast, stainless AISI 304/316 CrNi cast, Spheroidal cast iron
- ✓ Bearings: Snbz 12 bronze, carbon graphite, silicon carbide, hard metal coated steel
- ✓ Sealing: Lip seal

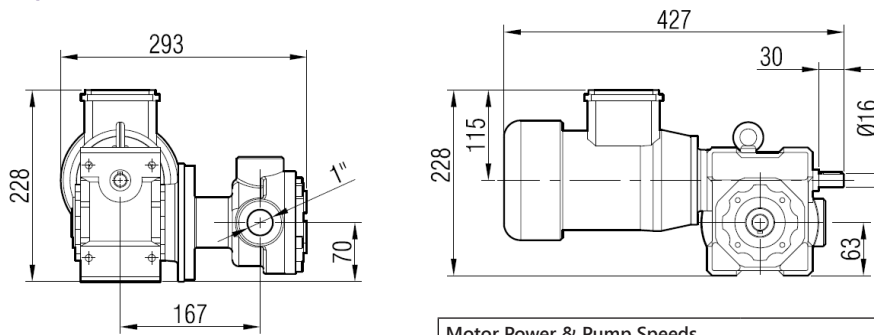
Capacity & Power Table					
Capacity (Q)	Speed (rpm)	Pressure			Viscosity
		2 Bar	3.5 Bar	5 Bar	
0.100	60	0.5 HP	0.5 HP	0.75 HP	75000 SSU
0.150	80	0.5 HP	0.75 HP	1 HP	25000 SSU
0.180	100	0.75 HP	1 HP	1 HP	25000 SSU



Pump Dimensions - Capacity Graphs:

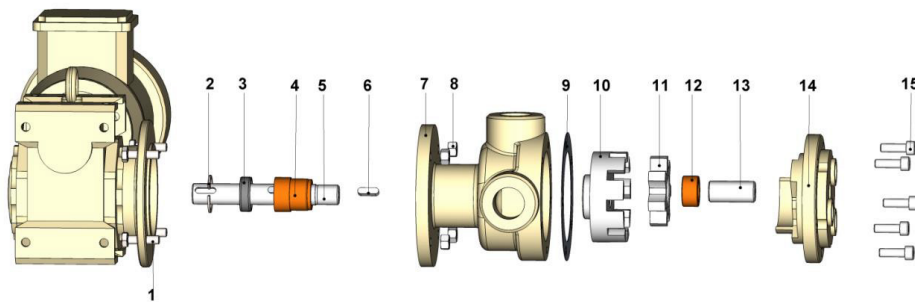


Pump Dimensions -



Motor Power & Pump Speeds			Kg.	
0.75 HP - 1 HP / 0.55 kw - 0.75 kw	27/97 d/d (rpm)	IRSFM52-80M	27	28

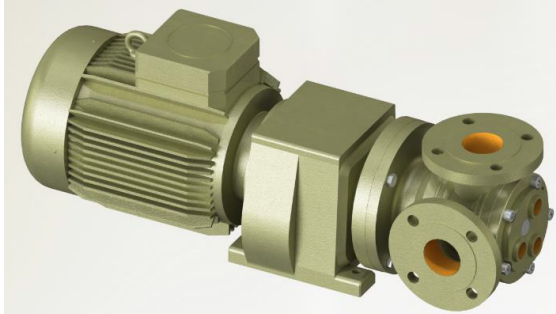
Spare Parts List -



No.	Part Name.	Qty.	No.	Part Name.	Qty.
1	Hex Bolt M8x30	4	9	Head Gasket	2
2	Internal Circlip (ø34)	1	10	Rotor	1
3	Lip Seal ø20xø33x10	1	11	Idler	1
4	Bracket Bushing	1	12	Idler Bushing	1
5	Shaft	1	13	Cover Pin	1
6	Cotter 6x6x20 A	1	14	Jacket Cover	1
7	Casing (Pipe Toothed)	1	15	Hex Socket M8x25 For Cover	6
8	Nut M8	4			



YCF 1½" Food Grade Internal Eccentric Gear Pump



Performance:

Flow rate	0.3 m³/h
Pressure	1 - 5 bar
Temperature	0 - 70 °C
Speed	100 d/d
Viscosity	25000 - 250000 SSU

Technical Features:

- ✓ Internal eccentric gear pump
- ✓ 1½" flanged connections
- ✓ Food grade model for hygienic food processing installations
- ✓ Designed for low pressure applications
- ✓ Compact design
- ✓ Reliable construction thanks to only two moving parts
- ✓ Various material options
- ✓ Available with jacketed cover and blind cover
- ✓ 230v, three phase 50/60hz motors available
- ✓ Manufactured according to CE regulations

Applications:

- ✓ Hygienic food processing
- ✓ Chocolate, cream and other dairy products
- ✓ Glucose and glycol
- ✓ Vegetable oil, cocoa butter
- ✓ Sugar syrup, nut butters
- ✓ Starch
- ✓ Any transfer of low to medium viscosity fluids with lubricating properties
- ✓ Not suitable for fluids containing abrasive particles

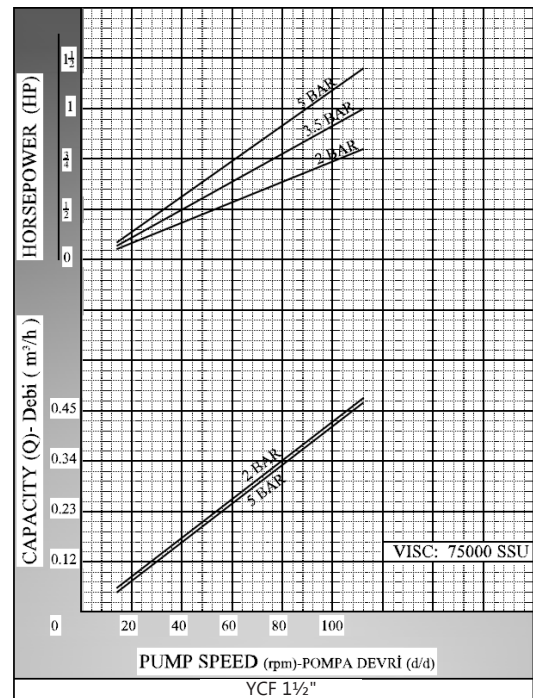
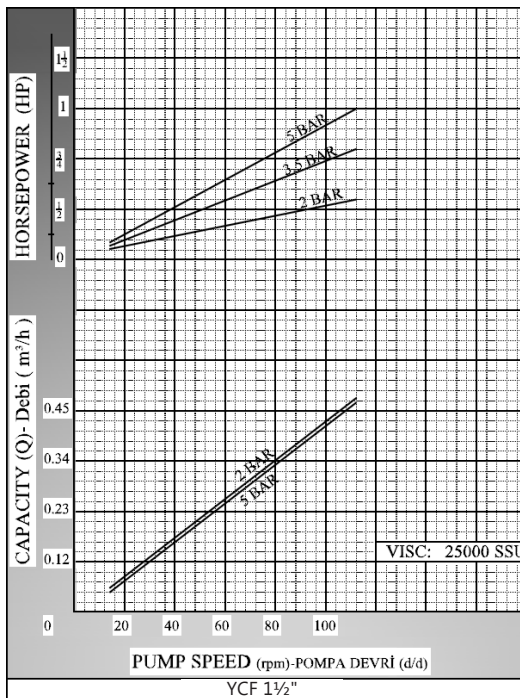
Material Options:

- ✓ Pump body, covers: Cast iron, steel cast, stainless AISI 304/316 CrNi cast
- ✓ Gears: Cast iron, steel cast, stainless AISI 304/316 CrNi cast, Spheroidal cast iron
- ✓ Bearings: Snbz 12 bronze, bearing, carbon graphite, silicon carbide, hard metal coated steel
- ✓ Sealing: Lip seal

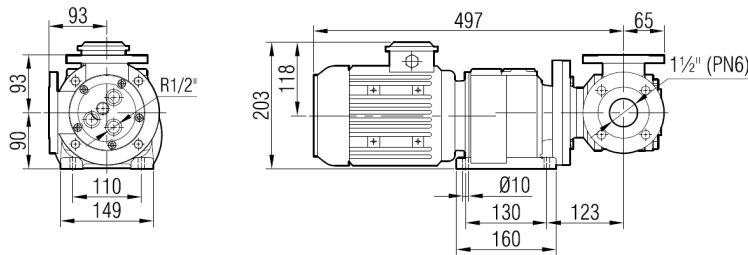
Capacity & Power Table					
Capacity (Q)	Speed (rpm)	Pressure			Viscosity
		2 Bar	3.5 Bar	5 Bar	
0.200	60	0.5 HP	0.5 HP	0.75 HP	75000 SSU
0.250	80	0.5 HP	0.75 HP	1 HP	25000 SSU
0.300	100	0.75 HP	1 HP	1.5 HP	25000 SSU



Pump Dimensions - Capacity Graphs:

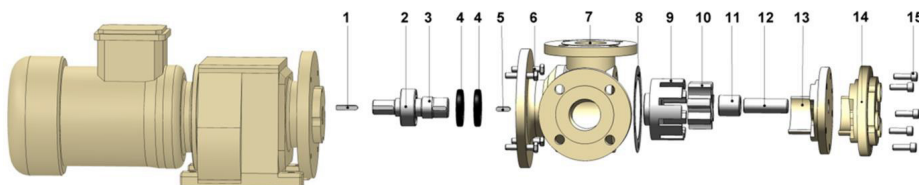


Pump Dimensions -



Motor Power & Pump Speeds			Kg.	
0.75 HP - 1 HP / 0.55 kw - 0.75 kw	30/100 d/d (rpm)	IRAFM53-80	35	37

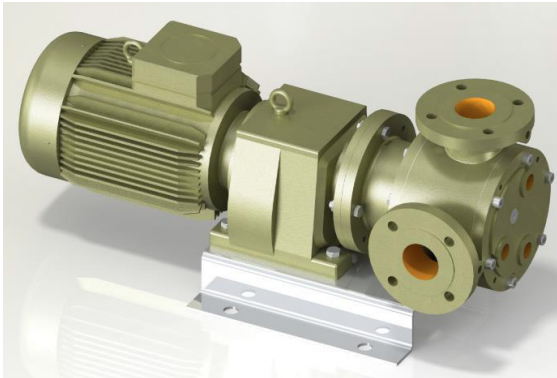
Spare Parts List -



No.	Part Name.	Qty.	No.	Part Name.	Qty.
1	Gearmotor Key 6x6x30 AB	1	9	Rotor Gear	1
2	Ball Bearing (3205-2RS)	1	10	Idler Gear	1
3	Shaft	1	11	Idler Bushing	1
4	Lip Seal ø30xø52x10	2	12	Cover Pin	1
5	Rotor Key 6x6x20 A	1	13	Blind Cover	1
6	Hex Bolt M8x30	4	14	Cover (w/ Heating Jacket)	1
7	Casing (w/ 90° Flanged Ports)	1	15	Inbus Bolt M8x30	5
8	Cover Gasket	2			



YCF 2½" Food Grade Internal Eccentric Gear Pump



Performance:

Flow rate	6 m³/h
Pressure	1 - 5 bar
Temperature	0 - 70 °C
Speed	100 d/d
Viscosity	25000 - 250000 SSU

Technical Features:

- ✓ Internal eccentric gear pump
- ✓ 2½" flanged connections
- ✓ Food grade model for hygienic food processing installations
- ✓ Designed for low pressure applications
- ✓ Compact design
- ✓ Reliable construction thanks to only two moving parts
- ✓ Various material options
- ✓ Available with jacketed cover and blind cover
- ✓ 230v, three phase 50/60hz motors available
- ✓ Manufactured according to CE regulations

Applications:

- ✓ Hygienic food processing
- ✓ Chocolate, cream and other dairy products
- ✓ Glucose and glycol
- ✓ Vegetable oil, cocoa butter
- ✓ Sugar syrup, nut butters
- ✓ Starch
- ✓ Any transfer of low to medium viscosity fluids with lubricating properties
- ✓ Not suitable for fluids containing abrasive particles

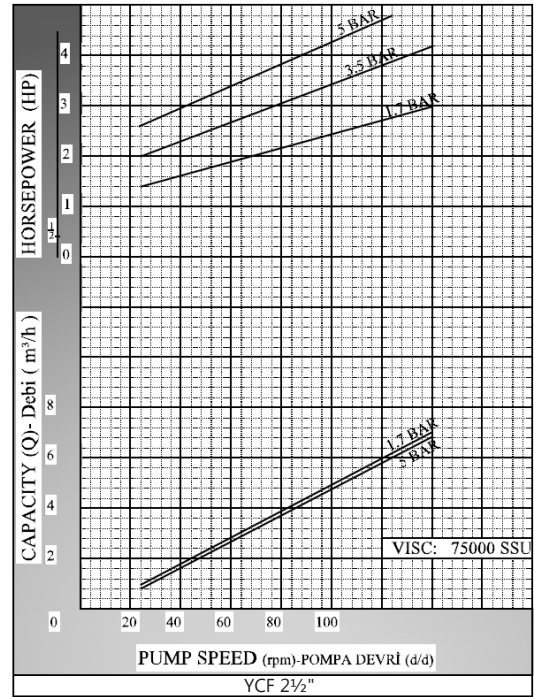
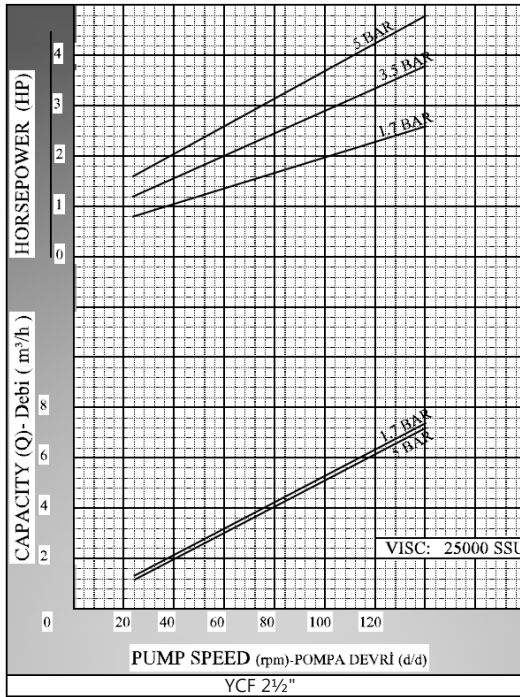
Material Options:

- ✓ Pump body, covers: Cast iron, steel cast, stainless AISI 304/316 CrNi cast
- ✓ Gears: Cast iron, steel cast, stainless AISI 304/316 CrNi cast, Spheroidal cast iron
- ✓ Bearings: Snbz 12 bronze, bearing, carbon graphite, silicon carbide, hard metal coated steel
- ✓ Sealing: Lip seal

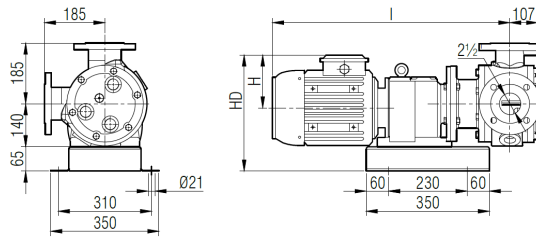
Capacity & Power Table					
Capacity (Q)	Speed (rpm)	Pressure			Viscosity
		2 Bar	3.5 Bar	5 Bar	
3	60	2 HP	2 HP	3 HP	75000 SSU
4	80	2 HP	3 HP	4 HP	25000 SSU
5	100	3 HP	4 HP	5.5 HP	25000 SSU



Pump Dimensions - Capacity Graphs:

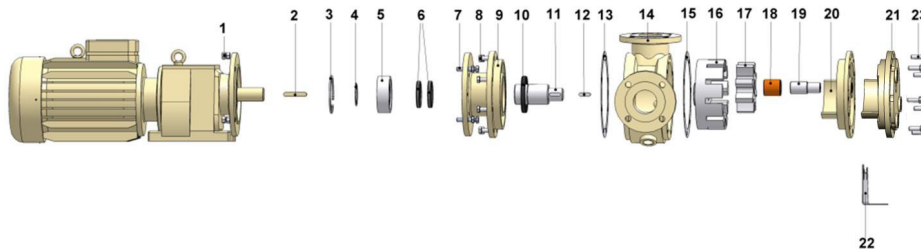


Pump Dimensions -



Motor Power & Pump Speeds		I	HD	H	Kg.	
2 HP / 1.5 kw		634	326	132	112	
30/98 d/d (rpm)	IRAFM63/90L					
3 - 4 HP / 2.2 - 3 kw		676	335	141	116	119
47/98 d/d (rpm)	IRAFM63/100L					
2 HP / 1.5 kw		729	338	149	133	
30/98 d/d (rpm)	IRAFM63/90L					
3 - 4 HP / 2.2 - 3 kw		775	371	182	146	
47/98 d/d (rpm)	IRAFM63/100L					

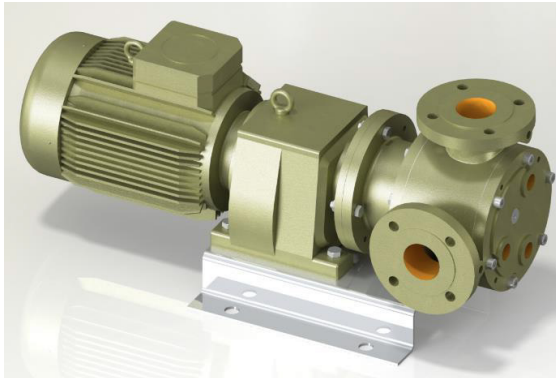
Spare Parts List -



No.	Part Name.	Qty.	No.	Part Name.	Qty.
1	Nut M12	4	13	Casing Gasket	1
2	Gearmotor Key 12x8x70 A	1	14	Casing (Jacketed & w/ Heating Jacket)	1
3	Internal Circlip (ø110)	1	15	Cover Gasket	2
4	External Circlip (ø60)	1	16	Rotor Gear	1
5	Ball Bearing (3212-2RS)	1	17	Idler Gear	1
6	Lip Seal ø60xø80x10	2	18	Idler Bushing	1
7	M12x45	4	19	Cover Pin	1
8	Screw M12x35	8	20	Blind Cover	1
9	Mounting Flange	1	21	Cover (w/ Heating Jacket)	1
10	Lip Seal ø70xø110x13	1	22	Pump Support	1
11	Shaft	1	23	Screw M12x40	7
12	Rotor Gear 10x8x35	1			



YCF 2" Food Grade Internal Eccentric Gear Pump



Performance:

Flow rate	2.7 m ³ /h
Pressure	1 - 5 bar
Temperature	0 - 70 °C
Speed	100 d/d
Viscosity	25000 - 250000 SSU

Technical Features:

- ✓ Internal eccentric gear pump
- ✓ 2" flanged connections
- ✓ Food grade model for hygienic food processing installations
- ✓ Designed for low pressure applications
- ✓ Compact design
- ✓ Reliable construction thanks to only two moving parts
- ✓ Various material options
- ✓ Available with jacketed cover and blind cover
- ✓ 230v, three phase 50/60hz motors available
- ✓ Manufactured according to CE regulations

Applications:

- ✓ Hygienic food processing
- ✓ Chocolate, cream and other dairy products
- ✓ Glucose and glycol
- ✓ Vegetable oil, cocoa butter
- ✓ Sugar syrup, nut butters
- ✓ Starch
- ✓ Any transfer of low to medium viscosity fluids with lubricating properties
- ✓ Not suitable for fluids containing abrasive particles

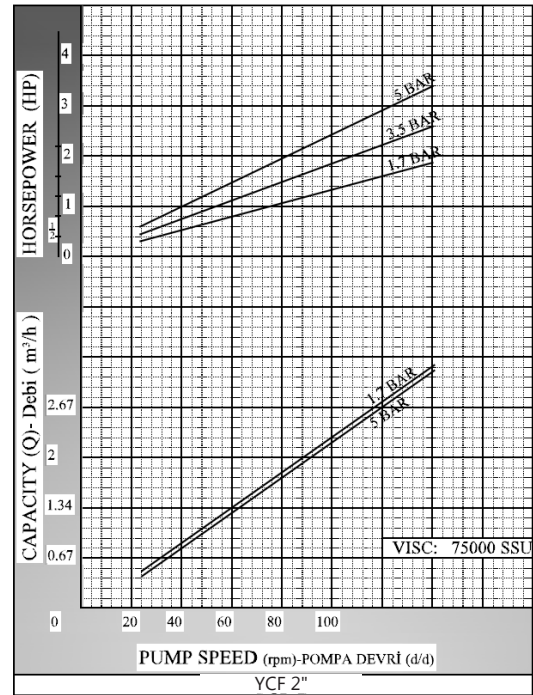
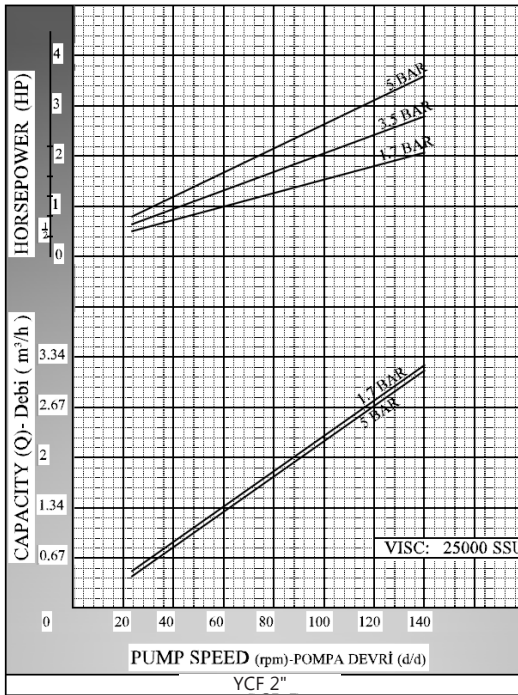
Material Options:

- ✓ Pump body, covers: Cast iron, steel cast, stainless AISI 304/316 CrNi cast
- ✓ Gears: Cast iron, steel cast, stainless AISI 304/316 CrNi cast, Spheroidal cast iron
- ✓ Bearings: Snbz 12 bronze, bearing, carbon graphite, silicon carbide, hard metal coated steel
- ✓ Sealing: Lip seal

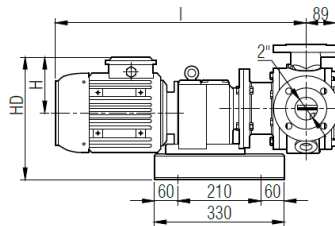
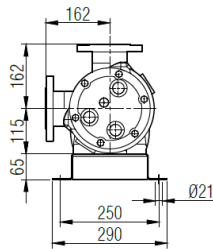
Capacity & Power Table					
Capacity (Q)	Speed (rpm)	Pressure			Viscosity
		2 Bar	3.5 Bar	5 Bar	
1.2	60	1 HP	1.5 HP	2 HP	75000 SSU
1.5	80	1.5 HP	2 HP	3 HP	25000 SSU
2	100	1.5 HP	2 HP	3 HP	25000 SSU



Pump Dimensions - Capacity Graphs:

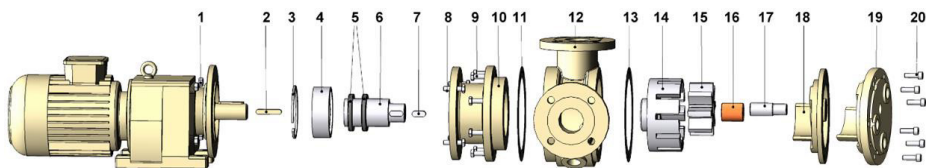


Pump Dimensions -



Motor Power & Pump Speeds		I	HD	H	Kg.	
1 HP / 0.75 kw	20/55 d/d (rpm) IRAFM63/80	580	287	118	87	
1.5 HP / 1.1 kw	20/77 d/d (rpm) IRAFM63/90S	605	301	132	90	
2 HP / 1.5 kw	30/98 d/d (rpm) IRAFM63/90L				92	
3 - 4 HP / 2.2 - 3 kw	47/98 d/d (rpm) IRAFM63/100L	672	310	141	96	99

Spare Parts List -



No.	Part Name.	Qty.	No.	Part Name.	Qty.
1	Nut M10	4	11	Bracket Gasket	1
2	Gearmotor Key 10x8x56 A	1	12	Casing (Jacketed w/ 90° Flanged Ports)	1
3	Internal Circlip (Ø110)	1	13	Cover Gasket	2
4	Ball Bearing (3212-2RS)	1	14	Rotor Gear	1
5	Lip Seal Ø60xØ80x10	2	15	Idler Gear	1
6	Shaft	1	16	Idler Bushing	1
7	Rotor Key 12x8x30	1	17	Cover Pin	1
8	Hex Screw M10x40	4	18	Blind Cover	1
9	Hex Screw M10x30	8	19	Cover (w/ Heating Jacket)	1
10	Mounting Flange	1	20	Inbus Bolt M10x35	6



YCF 3" Food Grade Internal Eccentric Gear Pump



Performance:

Flow rate	7 m ³ /h
Pressure	1 - 5 bar
Temperature	0 - 70 °C
Speed	100 d/d
Viscosity	25000 - 250000 SSU

Technical Features:

- ✓ Internal eccentric gear pump
- ✓ 3" flanged connections
- ✓ Food grade model for hygienic food processing installations
- ✓ Designed for low pressure applications
- ✓ Compact design
- ✓ Reliable construction thanks to only two moving parts
- ✓ Various material options
- ✓ Available with jacketed cover and blind cover
- ✓ 230v, three phase 50/60hz motors available
- ✓ Manufactured according to CE regulations

Applications:

- ✓ Hygienic food processing
- ✓ Chocolate, cream and other dairy products
- ✓ Glucose and glycol
- ✓ Vegetable oil, cocoa butter
- ✓ Sugar syrup, nut butters
- ✓ Starch
- ✓ Any transfer of low to medium viscosity fluids with lubricating properties
- ✓ Not suitable for fluids containing abrasive particles

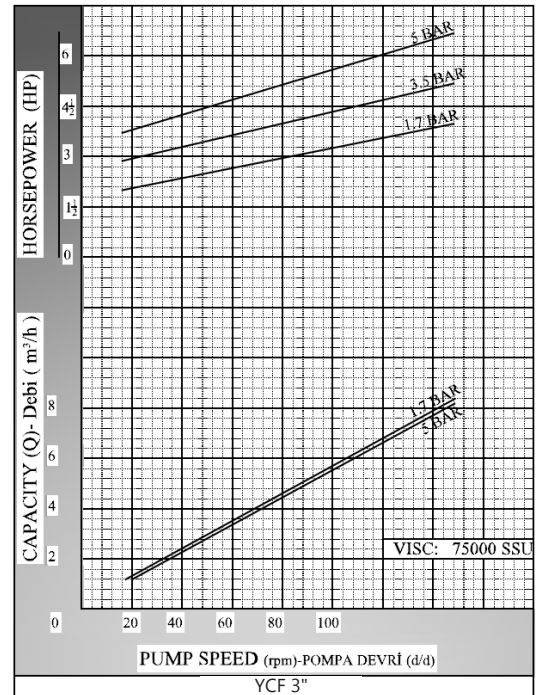
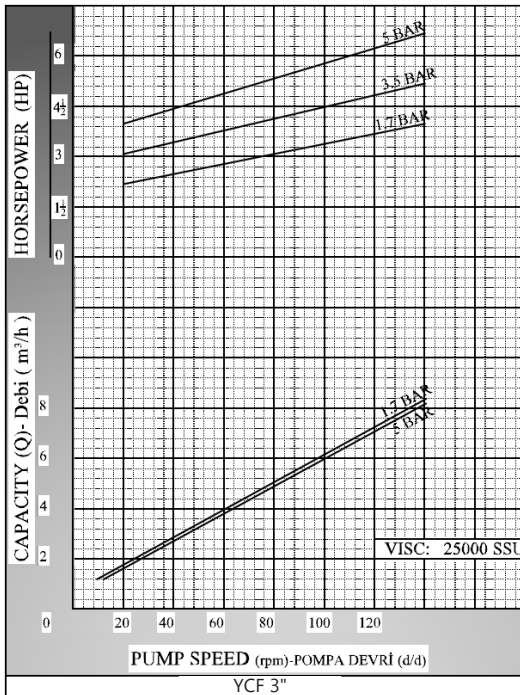
Material Options:

- ✓ Pump body, covers: Cast iron, steel cast, stainless AISI 304/316 CrNi cast
- ✓ Gears: Cast iron, steel cast, stainless AISI 304/316 CrNi cast, Spheroidal cast iron
- ✓ Bearings: Snbz 12 bronze, bearing, carbon graphite, silicon carbide, hard metal coated steel
- ✓ Sealing: Lip seal

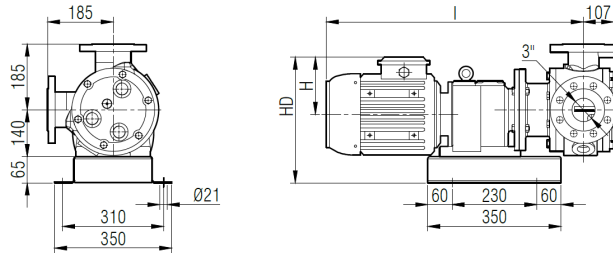
Capacity & Power Table					
Capacity (Q)	Speed (rpm)	Pressure			Viscosity
		2 Bar	3.5 Bar	5 Bar	
4	60	3 HP	4 HP	5.5 HP	75000 SSU
5	80	4 HP	5.5 HP	5.5 HP	25000 SSU
6	100	4 HP	5.5 HP	5.5 HP	25000 SSU



Pump Dimensions - Capacity Graphs:

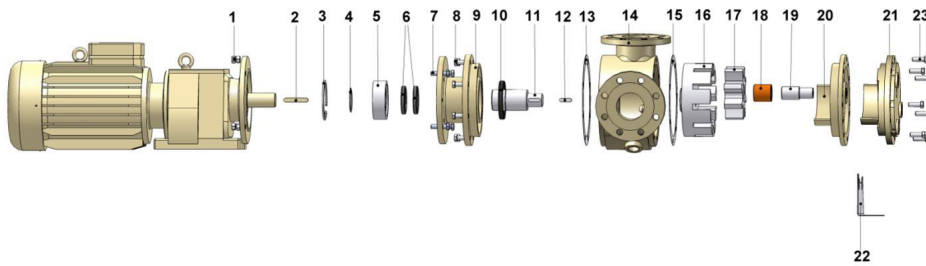


Pump Dimensions -



Motor Power & Pump Speeds		I	HD	H	Kg.	
3 - 4 HP / 2.2 - 3 kw		701	335	141	119	
47/98 d/d (rpm)	IRAFM63/100L	754	338	149	123	126
35/95 d/d (rpm)	IRAFM73/112M					
7.5 HP / 5.5 kw		800	371	182	140	
70/95 d/d (rpm)	IRAFM73/132S					

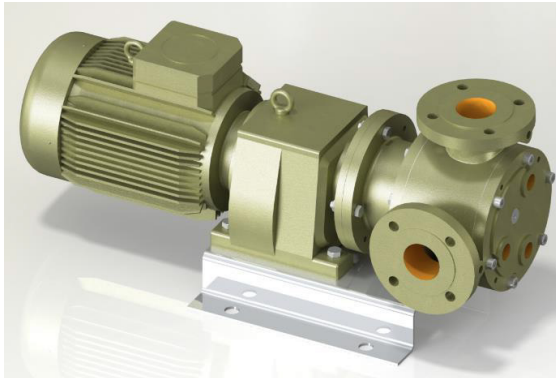
Spare Parts List -



No.	Part Name.	Qty.	No.	Part Name.	Qty.
1	Nut M12	4	13	Casing Gasket	1
2	Gearmotor Key 12x8x70 A	1	14	Casing (Jacketed & w/ Heating Jacket)	1
3	Internal Circlip (ø110)	1	15	Cover Gasket	2
4	External Circlip (ø60)	1	16	Rotor Gear	1
5	Ball Bearing (3212-2RS)	1	17	Idler Gear	1
6	Lip Seal ø60xø80x10	2	18	Idler Bushing	1
7	M12x45	4	19	Cover Pin	1
8	Screw M12x35	8	20	Blind Cover	1
9	Mounting Flange	1	21	Cover (w/ Heating Jacket)	1
10	Lip Seal ø70xø110x13	1	22	Pump Support	1
11	Shaft	1	23	Screw M12x40	7
12	Rotor Gear 10x8x35	1			



YCUF 2½" Food Grade Internal Eccentric Gear Pump



Performance:

Flow rate	7 m³/h
Pressure	1 - 5 bar
Temperature	0 - 70 °C
Speed	100 d/d
Viscosity	25000 - 250000 SSU

Technical Features:

- ✓ Internal eccentric gear pump
- ✓ 2½" flanged connections
- ✓ Food grade model for hygienic food processing installations
- ✓ Designed for low pressure applications
- ✓ Compact design
- ✓ Reliable construction thanks to only two moving parts
- ✓ Various material options
- ✓ Available with jacketed cover and blind cover
- ✓ 230v, three phase 50/60hz motors available
- ✓ Manufactured according to CE regulations

Applications:

- ✓ Hygienic food processing
- ✓ Chocolate, cream and other dairy products
- ✓ Glucose and glycol
- ✓ Vegetable oil, cocoa butter
- ✓ Sugar syrup, nut butters
- ✓ Starch
- ✓ Any transfer of low to medium viscosity fluids with lubricating properties
- ✓ Not suitable for fluids containing abrasive particles

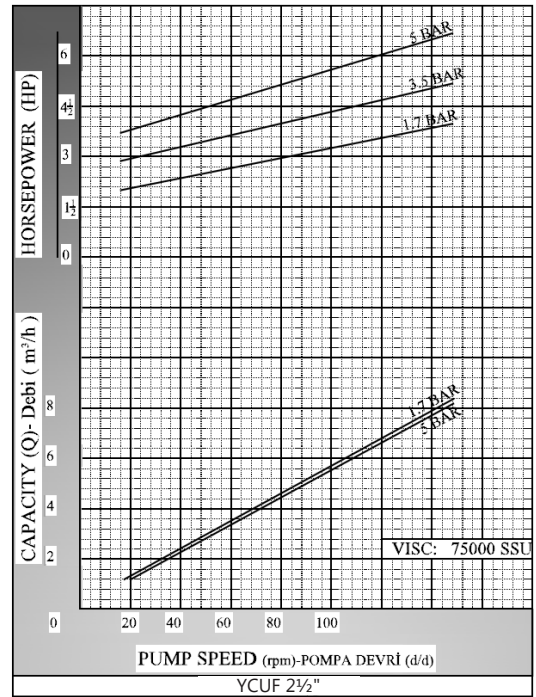
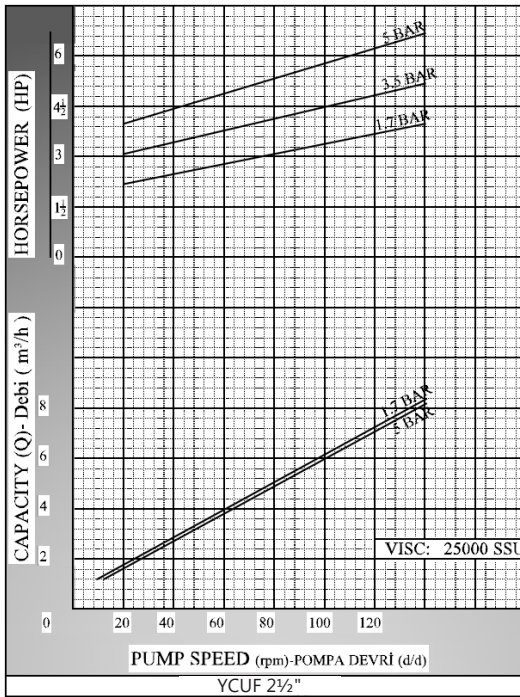
Material Options:

- ✓ Pump body, covers: Cast iron, steel cast, stainless AISI 304/316 CrNi cast
- ✓ Gears: Cast iron, steel cast, stainless AISI 304/316 CrNi cast, Spheroidal cast iron
- ✓ Bearings: Snbz 12 bronze, bearing, carbon graphite, silicon carbide, hard metal coated steel
- ✓ Sealing: Lip seal

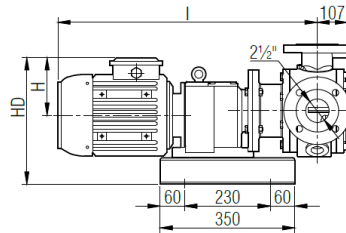
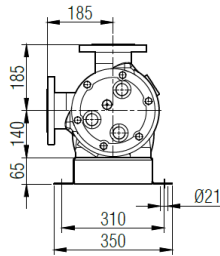
Capacity & Power Table					
Capacity (Q)	Speed (rpm)	Pressure			Viscosity
		2 Bar	3.5 Bar	5 Bar	
4	60	3 HP	4 HP	5.5 HP	75000 SSU
5	80	4 HP	5.5 HP	5.5 HP	25000 SSU
6	100	4 HP	5.5 HP	5.5 HP	25000 SSU



Pump Dimensions - Capacity Graphs:

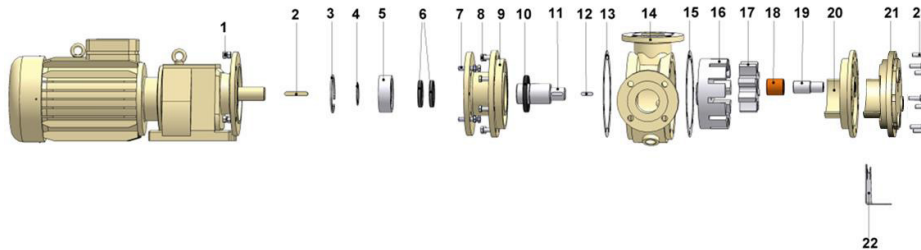


Pump Dimensions -



Motor Power & Pump Speeds		I	HD	H	Kg.	
3 - 4 HP / 2.2 - 3 kw		701	335	141	119	
47/98 d/d (rpm)	IRAFM63/100L					
5.5 HP / 4 kw		754	338	149	123	126
35/95 d/d (rpm)	IRAFM73/112M					
7.5 HP / 5.5 kw		800	371	182	140	
70/95 d/d (rpm)	IRAFM73/132S					

Spare Parts List -



No.	Part Name.	Qty.	No.	Part Name.	Qty.
1	Nut M12	4	13	Casing Gasket	1
2	Gearmotor Key 12x8x70 A	1	14	Casing (Jacketed & w/ Heating Jacket)	1
3	Internal Circlip (ø110)	1	15	Cover Gasket	2
4	External Circlip (ø60)	1	16	Rotor Gear	1
5	Ball Bearing (3212)	1	17	Idler Gear	1
6	Lip Seal ø60xø80x10	2	18	Idler Bushing	1
7	M12x45	4	19	Cover Pin	1
8	Screw M12x35	8	20	Blind Cover	1
9	Mounting Flange	1	21	Cover (w/ Heating Jacket)	1
10	Lip Seal ø70xø110x13	1	22	Pump Support	1
11	Shaft	1	23	Screw M12x40	7
12	Rotor Gear 10x8x35 A	1			