



YHL 2" Helical Gear Pump



Performance:

Flow rate	20 m ³ /h
Pressure	1 - 10 bar
Temperature	0 - 200 °C
Speed	1 - 1500 d/d
Viscosity	100 - 2500 SSU

Technical Features:

- ✓ Helical gear pump
- ✓ 2" flanged threaded connections
- ✓ Designed for medium pressure, high temperature applications
- ✓ Compact design
- ✓ Various material options
- ✓ Various sealing options
- ✓ Pressure relief valve on cover
- ✓ External jacket cover to maintain liquid temperature available
- ✓ 230v, three phase 50/60hz motors available
- ✓ Motor and gearbox drive available
- ✓ Manufactured according to CE regulations

Applications:

- ✓ Fuel oil, diesel fuel and gas oil transfer
- ✓ Molasses transfer
- ✓ Lubrication applications
- ✓ Coolant transfer
- ✓ Any fluids with lubricating properties
- ✓ Not suitable for fluids containing abrasive particles

Material Options:

- ✓ Pump body, covers & gears: Cast iron, steel cast, stainless AISI 304/316 cast
- ✓ Bearings: Snbz 12 bronze, bearing, carbon graphite, Ina bushing bearing
- ✓ Sealing: Soft seal, mechanical seal

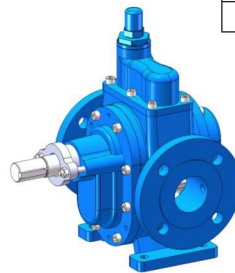
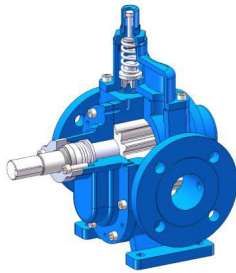


Capacity & Power Table					
Capacity (Q)	Speed (rpm)	Pressure			Viscosity
		0 Bar	3.5 Bar	7 Bar	
3.7	300	2 HP	3 HP	3 HP	25000 SSU
6.3	500	3 HP	3 HP	4 HP	7500 SSU
10.5	750	2 HP	3 HP	4 HP	2500 SSU
14	1000	3 HP	4 HP	5.5 HP	750 SSU
18.7	1400	4 HP	5.5 HP	7.5 HP	100 SSU

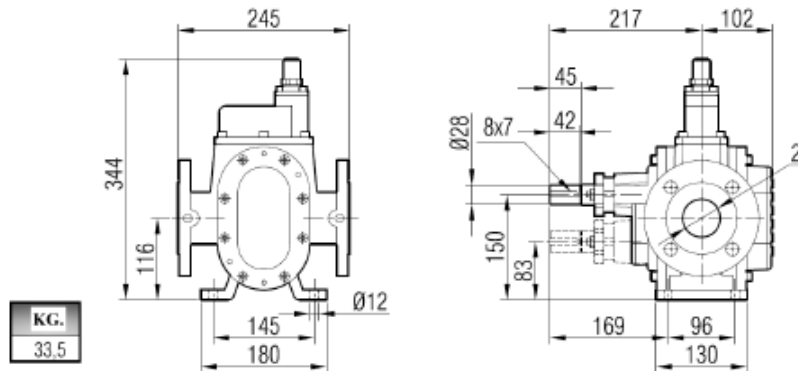
Motor Powers	
4 HP	1400 d/d (rpm)
Motor Body	
100	

Motor Powers	
2 HP	750 d/d (rpm)
3 HP	900 d/d (rpm)
5.5 HP	1400 d/d (rpm)
Motor Body	
112	

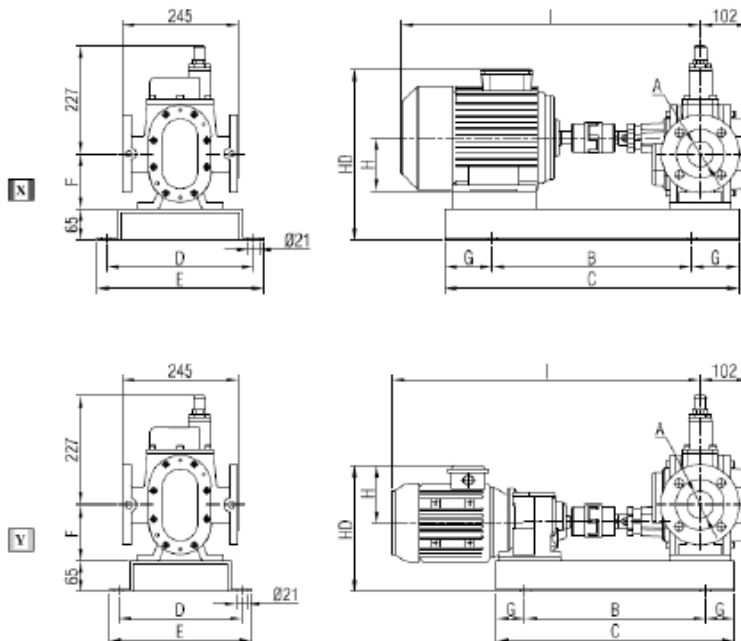
Motor Powers	
3 HP	750 d/d (rpm)
4 HP	750 d/d (rpm)
4 HP	900 d/d (rpm)
5.5 HP	900 d/d (rpm)
7.5 HP	1400 d/d (rpm)
Motor Body	
132	



Pump Dimensions:



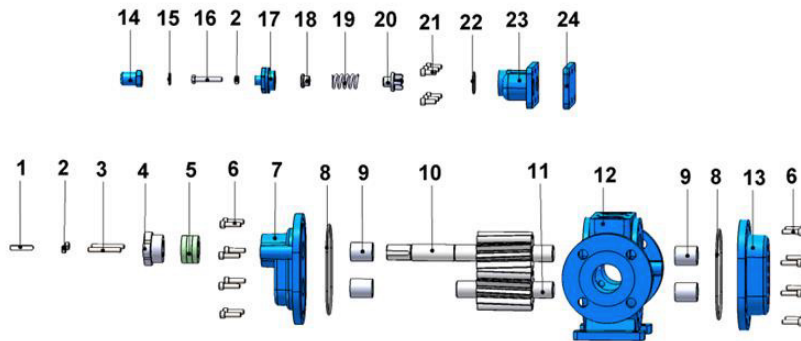
Coupling Dimensions - Motor Gearbox Drive:





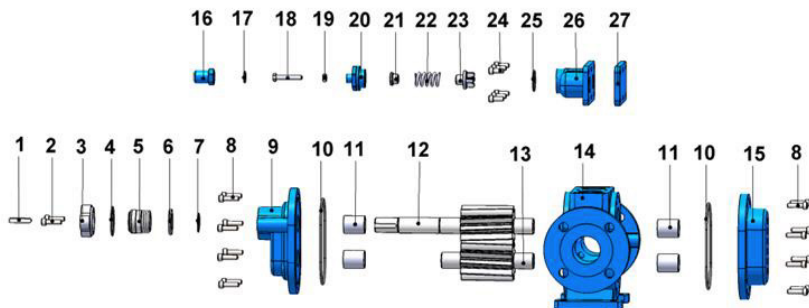
Motor Power & Speed			I	HD	H	B	C	D	E	F	G	Kg					
X	2 hp / 1.5 kw	750 d/d (rpm)	MOTOR 112M	631	359	112	420	620	310	350	116	100	83				
	3 hp / 2.2 kw	900 d/d (rpm)															
	3 hp / 2.2 kw	750 d/d (rpm)	MOTOR 132S	692	383	132	500	700					89				
	4 hp / 3 kw	900 d/d (rpm)															
	4 hp / 3 kw	750 d/d (rpm)	MOTOR 132M	730									98				
	5.5 hp / 4 kw	900 d/d (rpm)															
	5.5 hp / 4 kw	750 d/d (rpm)	MOTOR 160M	850	447	160	680	880					390	430	127		129
	7.5 hp / 5.5 kw	750 d/d (rpm)															
	7.5 hp / 5.5 kw	750 d/d (rpm)															
10 hp / 7.5 kw	900 d/d (rpm)																
Y	1 hp / 0.75 kw	200 / 400 d/d (rpm)	IRAM 42/80	649	262	118	380	500	260	300	116	60	60				
	1.5 hp / 1.1 kw	200 / 400 d/d (rpm)	IRAM 42/90S	668	276	132							550	124	64		
	2 hp / 1.5 kw	200 / 545 d/d (rpm)	IRAM 52/90L	729	282		430	550							124	71	
	4 hp / 3 kw	280 / 545 d/d (rpm)	IRAM 52/100L	758	291	141							420	620		310	350
	5.5 hp / 4 kw	200 / 570 d/d (rpm)	IRAM 62/112M	842	318	149											

Spare Parts List - Sealed with soft seal and pressure relief valve on cover:



No.	Part Name.	Qty.	No.	Part Name.	Qty.	No.	Part Name.	Qty.
1	Coupling Key 8x7x42 AB	1	9	Ina Bearing	4	17	Bypass Cover	1
2	Nut M8	3	10	Driving Shaft	1	18	Washer	1
3	Stud M8x60	2	11	Driven Shaft	1	19	Spring	1
4	Packing Press	1	12	Casing	1	20	Valve	1
5	Packing Gland / Soft Seal	1 TK	13	Back Cover	1	21	Inbus Bolt M8x20	6
6	Imbus Bolt M8x30	16	14	Cap	1	22	Bypass O-Ring	1
7	Front Cover	1	15	Cap O-Ring	1	23	Pressure Relief Valve	1
8	Cover O-Ring	2	16	Adjusting Screw M8x55	1	24	Bypass Inlets Cover	1

Spare Parts List - Sealed with mechanical seal, and pressure relief valve on cover:



No.	Part Name.	Qty.	No.	Part Name.	Qty.	No.	Part Name.	Qty.
1	Coupling Key 8x7x42 AB	1	10	Cover O-Ring	2	19	Nut M8	1
2	Adjusting Screw M8x30	2	11	Ina Bearing	4	20	Bypass Cover	1
3	Mechanical Seal Cover	1	12	Driving Shaft	1	21	Washer	1
4	Mechanical Cover O-Ring	1	13	Driven Shaft	1	22	Spring	1
5	Mechanical Seal Ø30	1	14	Casing	1	23	Valve	1
6	Mechanical Seal Washer	1	15	Back Cover	1	24	Inbus Bolt M8x20	6
7	External Circlip (Ø30)	1	16	Cap	1	25	Bypass O-Ring	1
8	Inbus Bolt M8x30	16	17	Cap O-Ring	1	26	Pressure Relief Valve	1
9	Front Cover	1	18	Adjusting Screw M8x55	1	27	Bypass Inlets Cover	1



YHL 2½" Helical Gear Pump



Performance:

Flow rate	38 m ³ /h
Pressure	1 - 15 bar
Temperature	0 - 350 °C
Speed	1 - 450 d/d
Viscosity	100 - 250000 SSU

Technical Features:

- ✓ Helical gear pump
- ✓ 2½" flanged threaded connections
- ✓ Designed for medium pressure, high temperature applications
- ✓ Compact design
- ✓ Various material options
- ✓ Various sealing options
- ✓ Pressure relief valve on cover
- ✓ External jacket cover to maintain liquid temperature available
- ✓ 230v, three phase 50/60hz motors available
- ✓ Motor and gearbox drive available
- ✓ Manufactured according to CE regulations

Applications:

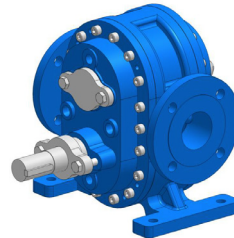
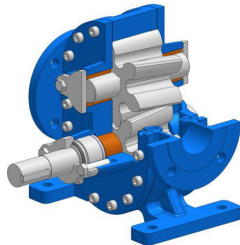
- ✓ Fuel oil, diesel fuel and gas oil transfer
- ✓ Molasses transfer
- ✓ Lubrication applications
- ✓ Coolant transfer
- ✓ Any fluids with lubricating properties
- ✓ Not suitable for fluids containing abrasive particles

Material Options:

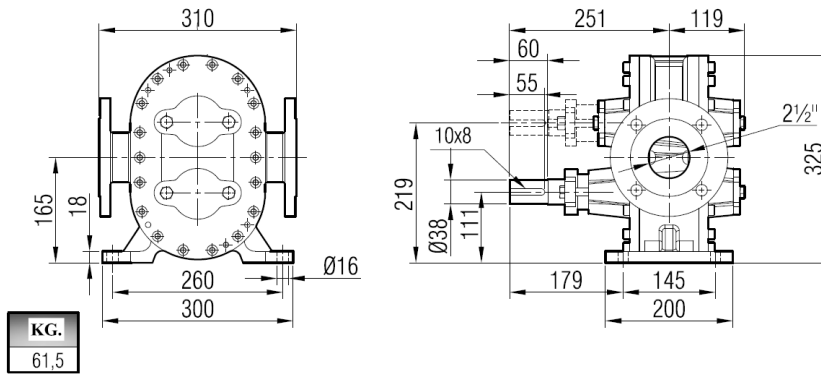
- ✓ Pump body, covers & gears: Cast iron, steel cast, stainless AISI 304/316 cast
- ✓ Bearings: Snbz 12 bronze, bearing, carbon graphite, Ina bushing bearing
- ✓ Sealing: Soft seal, mechanical seal



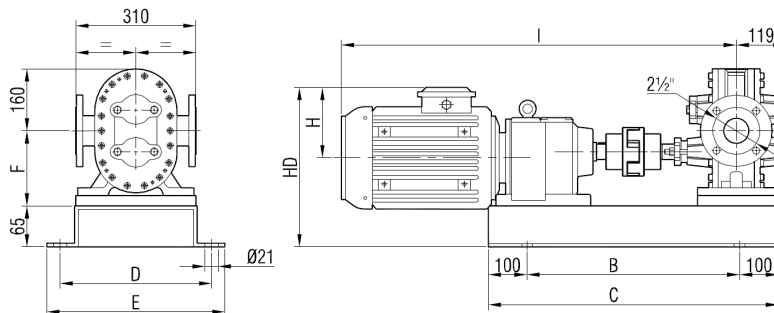
Capacity & Power Table					
Capacity (Q)	Speed (rpm)	Pressure			Viscosity
		0 Bar	3.5 Bar	7 Bar	
15.7	200	7.5 HP	10 HP	15 HP	25000 SSU
24	300	10 HP	15 HP	20 HP	7500 SSU
34	400	10 HP	15 HP	20 HP	2500 SSU
43	500	10 HP	15 HP	20 HP	750 SSU
37	500	7.5 HP	10 HP	20 HP	100 SSU



Pump Dimensions:



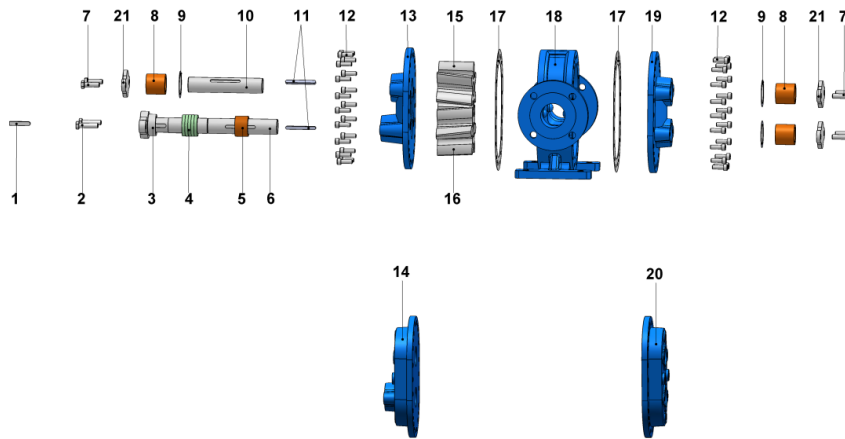
Coupling Dimensions - Gearbox Drive:



Motor Power & Speed			I	HD	H	B	C	D	E	F	Kg
7.5 hp / 5.5 kw	75 / 450 d/d (rpm)	IRAM72/132S	943	371	182	580	780	380	420	194	168
10 hp / 7.5 kw	115 / 450 d/d (rpm)	IRAM72/132M	1018								179
15 hp / 11 kw	205 / 450 d/d (rpm)	IRAM72/C132M	181								
20 hp / 15 kw	130 / 450 d/d (rpm)	IRAM82/160L	1206	457	225	680	880	390	430	234	318

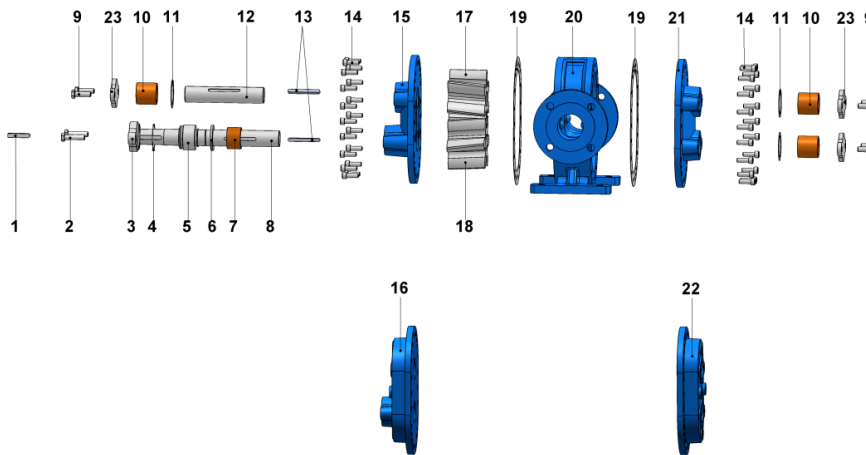


Spare Parts List - Sealed with soft seal:



No.	Part Name.	Qty.	No.	Part Name.	Qty.	No.	Part Name.	Qty.
1	Coupling Key 10x8x55 AB	1	8	Bushing	3	15	Right Helical Gear	1
2	Hex Bolt M12x50	2	9	Bushing Cover O-Ring	3	16	Left Helical Gear	1
3	Packing Press	1	10	Driven Shaft	1	17	Casing Gasket	2
4	Packing Gland / Soft Seal	5	11	Gear Key 8x7x80 A	2	18	Casing	1
5	Seal Bushing	1	12	Imbus Bolt M10x30	36	19	Back Cover	1
6	Driving Shaft	1	13	Front Cover	1	20	Jacketed Back Cover	1
7	Hex Bolt M12x40	6	14	Jacketed Front Cover	1	21	Bushing Cover	3

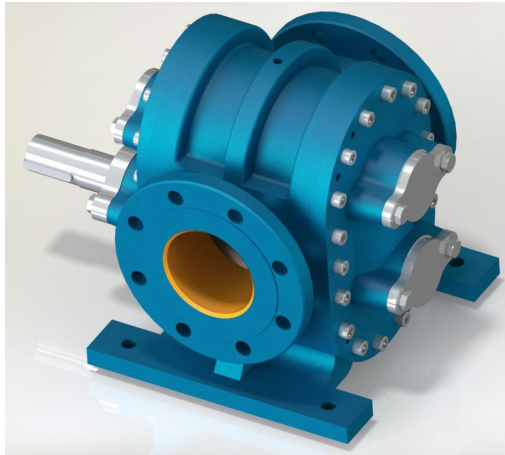
Spare Parts List - Sealed with mechanical seal:



No.	Part Name.	Qty.	No.	Part Name.	Qty.	No.	Part Name.	Qty.
1	Coupling Key 10x8x55 AB	1	9	Hex Bolt M12x40	6	17	Right Helical Gear	1
2	Hex Bolt M12x50	2	10	Bushing	3	18	Left Helical Gear	1
3	Mechanical Seal Cover	1	11	Bushing Cover O-Ring	3	19	Casing Gasket	2
4	Mechanical Seal Cover O-Ring	1	12	Driven Shaft	1	20	Casing	1
5	Mechanical Seal	1	13	Gear Key 8x7x80 A	2	21	Back Cover	1
6	Mechanical Seal Washer	1	14	Hex Socket M10x30	36	22	Jacketed Back Cover	1
7	Seal Bushing	1	15	Front Cover	1	23	Bushing Cover	3
8	Driving Shaft	1	16	Jacketed Front Cover	1			



YHL 4" Helical Gear Pump



Performance:

Flow rate	76 m ³ /h
Pressure	1 - 15 bar
Temperature	0 - 200 °C
Speed	1 - 450 d/d
Viscosity	100 - 250000 SSU

Technical Features:

- ✓ Helical gear pump
- ✓ 4" flanged threaded connections
- ✓ Designed for medium pressure, high temperature applications
- ✓ Compact design
- ✓ Various material options
- ✓ Various sealing options
- ✓ Pressure relief valve on cover
- ✓ External jacket cover to maintain liquid temperature available
- ✓ 230v, three phase 50/60hz motors available
- ✓ Motor and gearbox drive available
- ✓ Manufactured according to CE regulations

Applications:

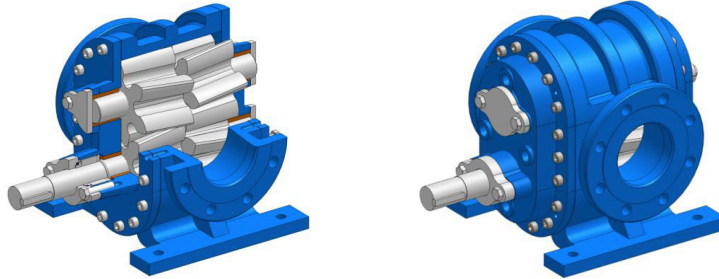
- ✓ Fuel oil, diesel fuel and gas oil transfer
- ✓ Molasses transfer
- ✓ Lubrication applications
- ✓ Coolant transfer
- ✓ Any fluids with lubricating properties
- ✓ Not suitable for fluids containing abrasive particles

Material Options:

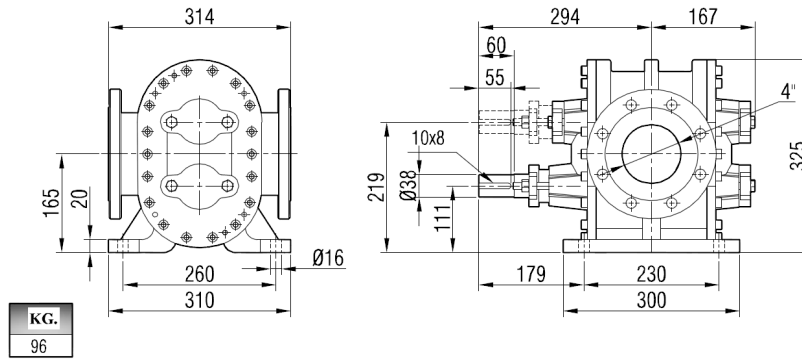
- ✓ Pump body, covers & gears: Cast iron, steel cast, stainless AISI 304/316 cast
- ✓ Bearings: Snbz 12 bronze, bearing, carbon graphite, Ina bushing bearing
- ✓ Sealing: Soft seal, mechanical seal



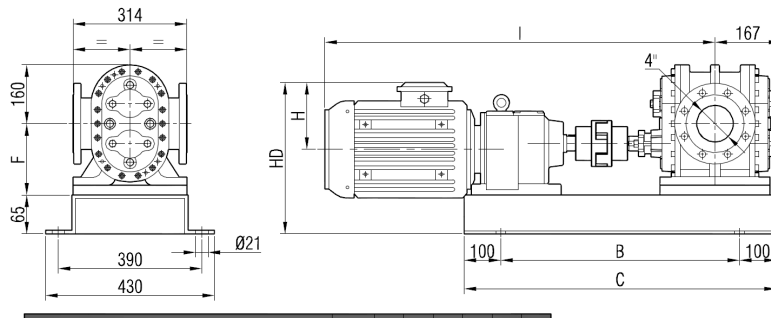
Capacity & Power Table					
Capacity (Q)	Speed (rpm)	Pressure			Viscosity
		0 Bar	3.5 Bar	7 Bar	
31	200	15 HP	20 HP	25 HP	25000 SSU
48	300	20 HP	25 HP	30 HP	7500 SSU
68	400	20 HP	25 HP	40 HP	2500 SSU
75	440	20 HP	25 HP	40 HP	750 SSU
78	500	15 HP	20 HP	40 HP	100 SSU



Pump Dimensions:



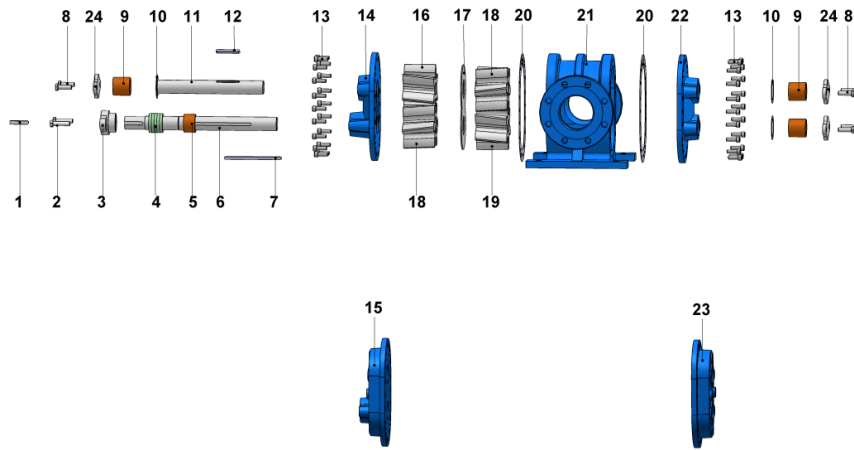
Coupling Dimensions - Gearbox Drive:



Motor Power & Speed			I	HD	H	B	C	F	Kg
15 hp / 11 kw	205 / 450 d/d (rpm)	IRAM72/C132M	1064	371	182	680	880	194	221
20 hp / 15 kw	130 / 450 d/d (rpm)	IRAM82/160L	1249	457	225	750	950	234	357
25 hp / 18.5 kw	180 / 450 d/d (rpm)	IRAM82/180M	1261	480	248				377
30 hp / 22 kw	260 / 450 d/d (rpm)	IRAM82/180L	1299						402

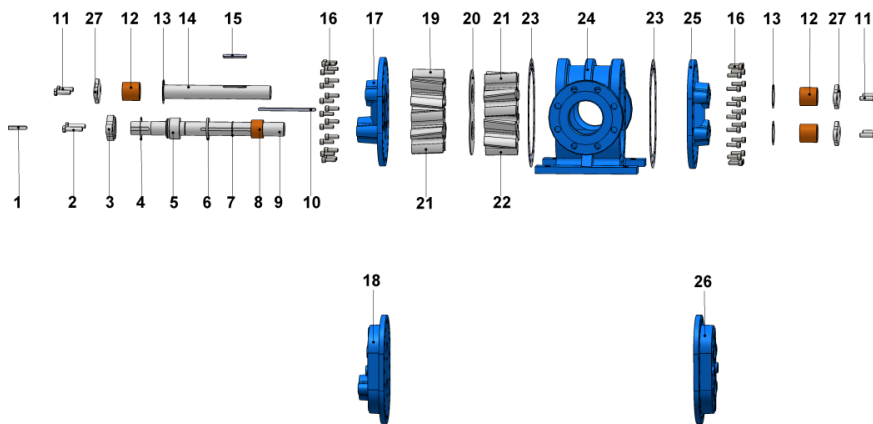


Spare Parts List - Sealed with soft seal:



No.	Part Name.	Qty.	No.	Part Name.	Qty.	No.	Part Name.	Qty.
1	Coupling Key 10x8x55 AB	1	9	Bushing	3	17	Interval Sheet Material	1
2	Hex Bolt M12x50	2	10	Bushing Cover O-Ring	3	18	Left Helical Gear (w/ Key & Shoulder)	2
3	Packing Press	1	11	Driven Shaft	1	19	Right Helical Gear (w/ Key)	1
4	Soft Seal / Packing Gland	1	12	Driven Shaft Key 8x7x80 A	1	20	Casing Gasket	2
5	Seal Bushing	1	13	Imbus Bolt M10x30	36	21	Casing	1
6	Driving Shaft	1	14	Front Cover	1	22	Back Cover	1
7	Driving Shaft Key 8x7x170 A	1	15	Jacketed Front Cover	1	23	Jacketed Back Cover	1
8	Hex Bolt M12x40	6	16	Right Helical Gear (w/out Key)	1	24	Bushing Cover	3

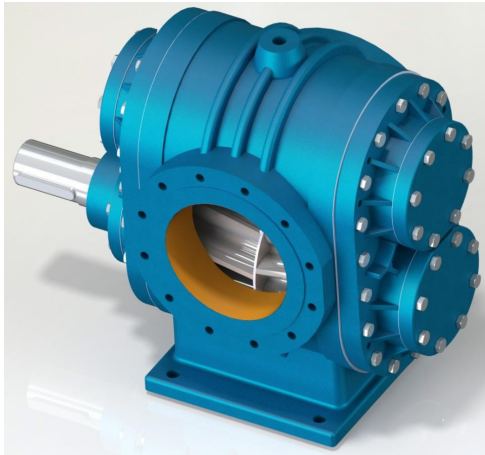
Spare Parts List - Sealed with mechanical seal:



No.	Part Name.	Qty.	No.	Part Name.	Qty.	No.	Part Name.	Qty.
1	Coupling Key 10x8x55 AB	1	10	Driving Shaft Key 8x7x170 A	1	19	Right Helical Gear (w/out Key)	1
2	Hex Bolt M12x50	2	11	Hex Bolt M12x40	6	20	Interval Sheet Material	1
3	Mechanical Seal Cover	1	12	Bushing	3	21	Left Helical Gear (w/ Key & Shoulder)	2
4	Mechanical Seal Cover O-Ring	1	13	Bushing O-Ring	3	22	Right Helical Gear (w/ Key)	1
5	Mechanical Seal	1	14	Driven Shaft	1	23	Casing Gasket	2
6	Mechanical Seal Washer	1	15	Driven Shaft Key 8x7x80 A	1	24	Casing	1
7	External Circlip (ø40)	1	16	Imbus Bolt M10x30	36	25	Back Cover	1
8	Seal Bushing	1	17	Front Cover	1	26	Jacketed Back Cover	1
9	Driving Shaft	1	18	Jacketed Front Cover	1	27	Bushing Cover	3



YHL 8" Helical Gear Pump



Performance:

Flow rate	250 m ³ /h
Pressure	1 - 15 bar
Temperature	0 - 200 °C
Speed	1 - 450 d/d
Viscosity	100 - 250000 SSU

Technical Features:

- ✓ Helical gear pump
- ✓ 8" flanged threaded connections
- ✓ Designed for medium pressure, high temperature applications
- ✓ Compact design
- ✓ Various material options
- ✓ Various sealing options
- ✓ Pressure relief valve on cover
- ✓ External jacket cover to maintain liquid temperature available
- ✓ 230v, three phase 50/60hz motors available
- ✓ Motor and gearbox drive available
- ✓ Manufactured according to CE regulations

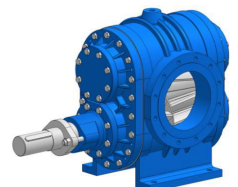
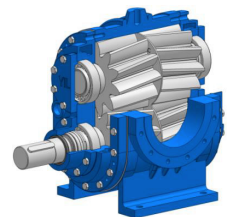
Applications:

- ✓ Fuel oil, diesel fuel and gas oil transfer
- ✓ Molasses transfer
- ✓ Lubrication applications
- ✓ Coolant transfer
- ✓ Any fluids with lubricating properties
- ✓ Not suitable for fluids containing abrasive particles

Material Options:

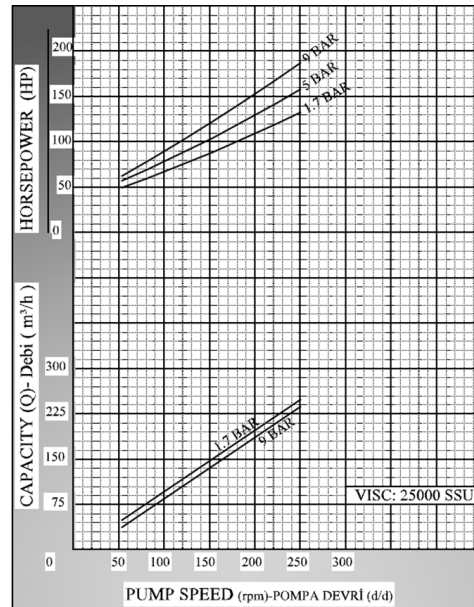
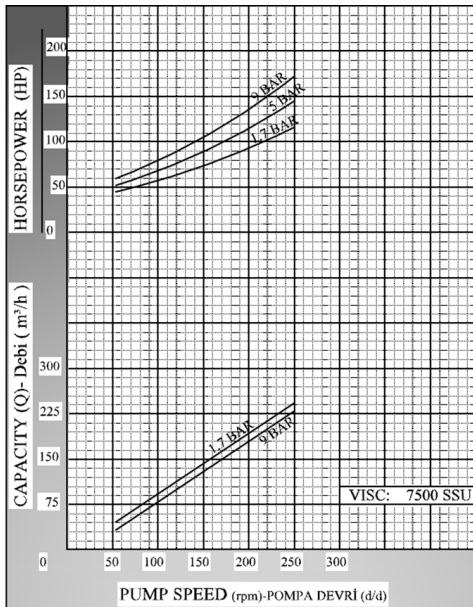
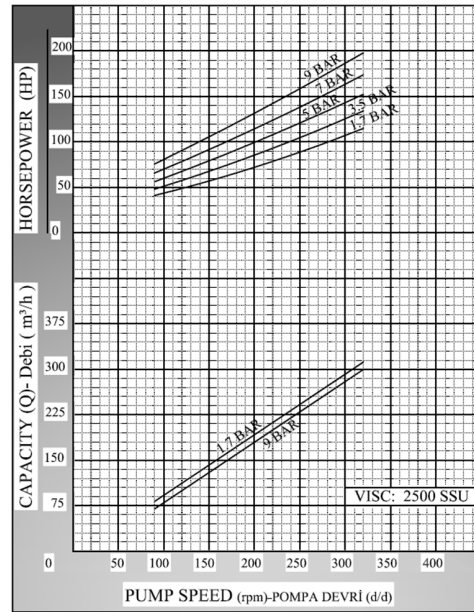
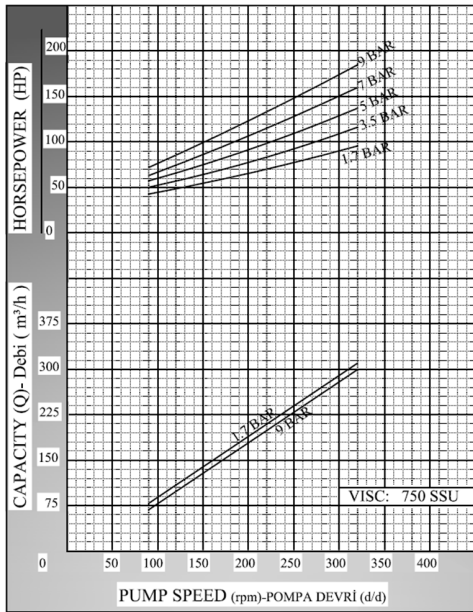
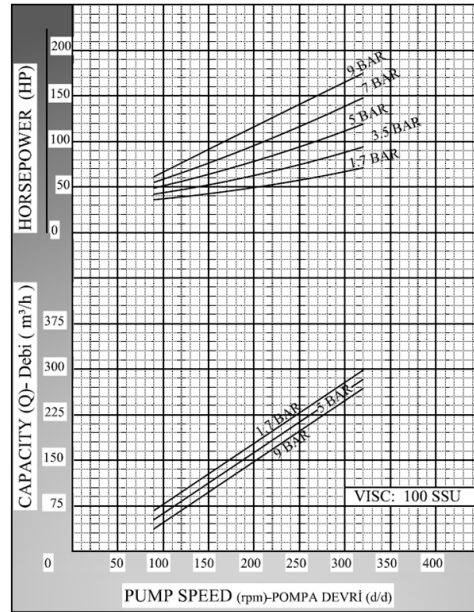
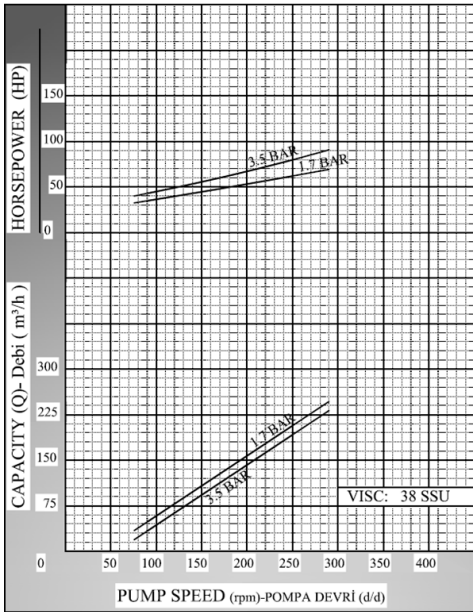
- ✓ Pump body, covers & gears: Cast iron, steel cast, stainless AISI 304/316 cast
- ✓ Bearings: Snbz 12 bronze, bearing, carbon graphite, Ina bushing bearing
- ✓ Sealing: Soft seal, mechanical seal

Capacity & Power Table					
Capacity (Q)	Speed (rpm)	Pressure			Viscosity
		0 Bar	3.5 Bar	7 Bar	
90	100	75 HP	100 HP	100 HP	25000 SSU
135	150	100 HP	100 HP	120 HP	7500 SSU
187	200	100 HP	100 HP	120 HP	2500 SSU
235	250	100 HP	120 HP	150 HP	750 SSU
280	300	75 HP	100 HP	150 HP	100 SSU



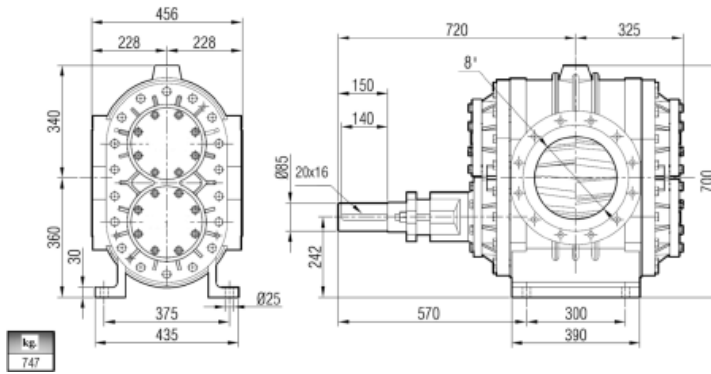


Performance Curves:

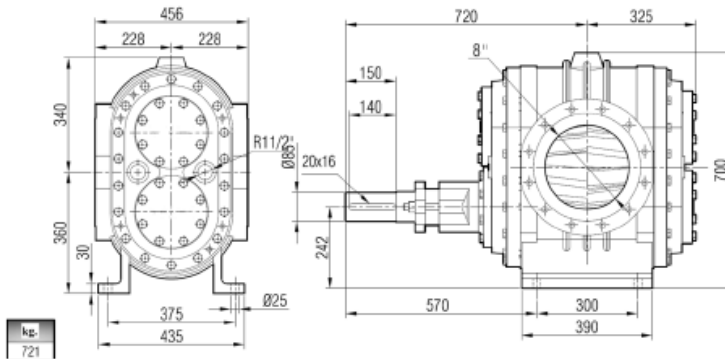




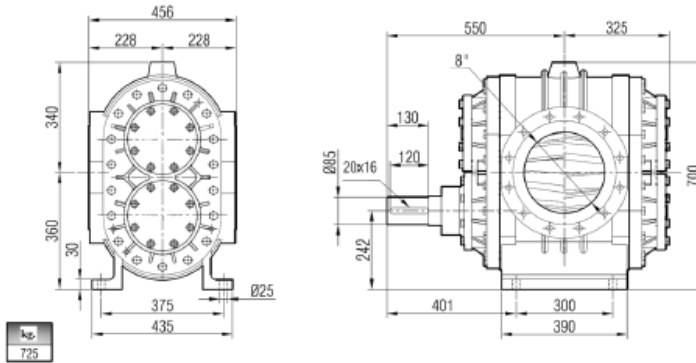
Pump Dimensions - Sealed with soft seal:



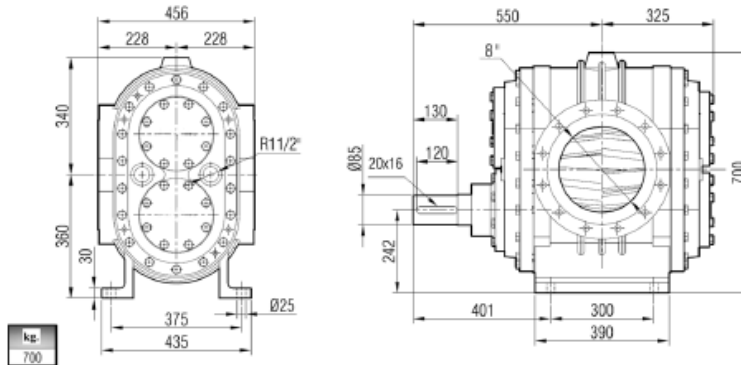
Pump Dimensions - Sealed with soft seal and jacketed:



Pump Dimensions - Sealed with mechanical seal:

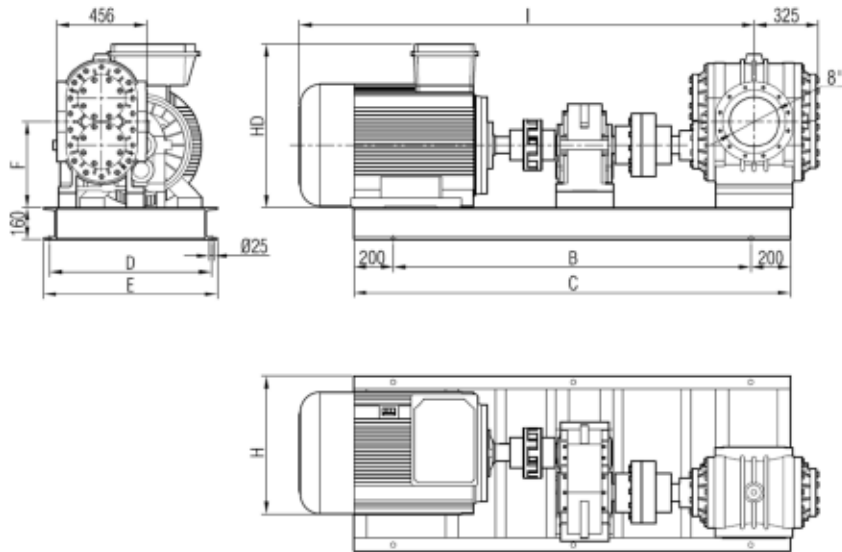


Pump Dimensions - Sealed with mechanical seal and jacketed:





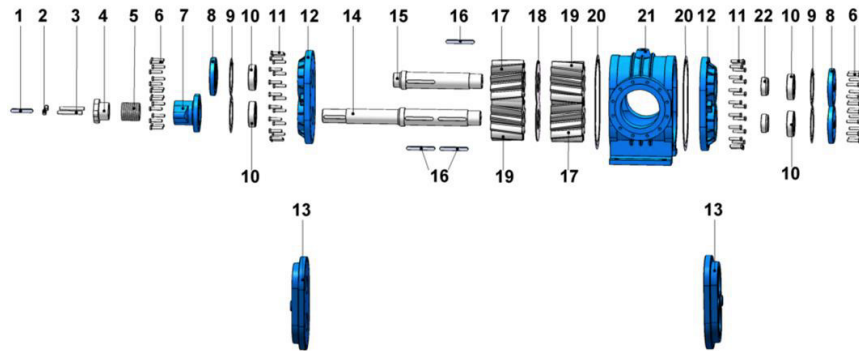
Coupling Dimensions - Gearbox Drive:



Motor Power & Speed			I	HD	H	B	C	D	E	F	Kg		
75 hp / 55 kw	PACKED GLAND	DN250	2175	692	677	1730	2130	980	1050	288	1660		
A200-P9 / 250M	MECHANICALLY SEALED		2024			1590	1990				1631		
100 hp / 75 kw	PACKED GLAND		2238	752	751	1825	2225	1030	1100	320	1823		
A200-P9 / 280M	MECHANICALLY SEALED		2089			1680	2080				1793		
120 hp / 90 kw	PACKED GLAND		2238			1825	2225				1877		
A200-P9 / 280M	MECHANICALLY SEALED		2089			1680	2080				1847		
150 hp / 110 kw	PACKED GLAND		2430	925	803	1920	2320			1280	1350	333	2043
A200-P9 / 315S	MECHANICALLY SEALED		2281			1770	2170						2013
175 hp / 132 kw	PACKED GLAND		2430			1920	2320						2125
A200-P9 / 315M	MECHANICALLY SEALED		2281			1770	2170						2095
150 hp / 110 kw	PACKED GLAND		2598	930	813	2090	2490	1280	1350			338	2423
2A430-P9 / 315S	MECHANICALLY SEALED		2448			1940	2340						2393
175 hp / 132 kw	PACKED GLAND		2598			2090	2490						2504
2A430-P9 / 315S	MECHANICALLY SEALED		2448			1940	2340						2497

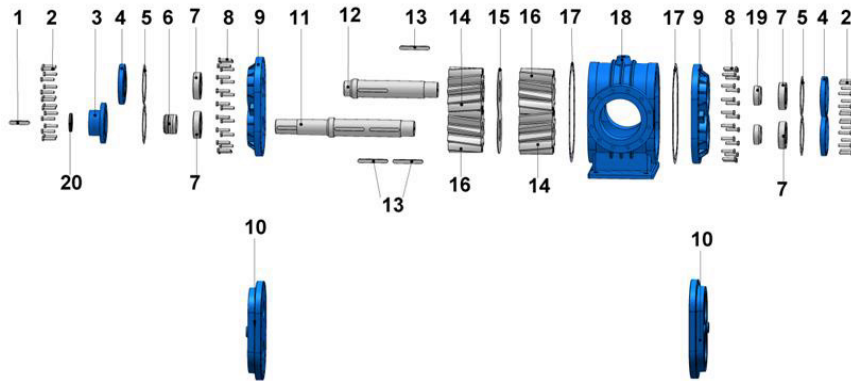


Spare Parts List - Sealed with soft seal:



No.	Part Name.	Qty.	No.	Part Name.	Qty.	No.	Part Name.	Qty.
1	Coupling Key 20x16x140 A	1	9	Bearing Cover Gasket	4	17	Left Helical Gear with Key & Shoulder	2
2	Nut M20	2	10	Bearing (NJ2218)	4	18	Interval Sheet Metal	1
3	Stud M20x160 (For Packing Seal)	2	11	Hex Bolt M16x70	36	19	Right Helical Gear with Key	2
4	Packing Press	1	12	Cover	2	20	Casing Gasket	2
5	Packing	1	13	Jacketed Cover	2	21	Casing	1
6	Hex Bolt M18x70	32	14	Driving Shaft	1	22	Spacer	2
6	Hex Screw M16x60 (For Jacketed Cover)	32						
7	Soft Seal Seat	1	15	Driven Shaft	1			
8	Ball Bearing Cover	3	16	Gear Key 20x16x180	3			

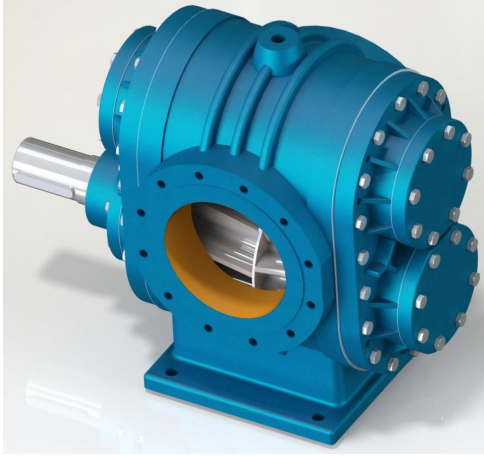
Spare Parts List - Sealed with mechanical seal:



No.	Part Name.	Qty.	No.	Part Name.	Qty.	No.	Part Name.	Qty.
1	Coupling Key 20x16x120 A	1	8	Hex Bolt M16x70	36	15	Interval Sheet Metal	1
2	Hex Bolt M18x70	32	9	Cover	2	16	Right Helical Gear with Key	2
	Hex Bolt M16x60 (For Jacketed Cover)	32	10	Jacketed Cover	2	17	Casing Gasket	2
3	Mechanical Seals	1	11	Driving Shaft	1	18	Casing	1
	Seat		12	Driven Shaft	1	19	Spacer	2
4	Ball Bearing Cover	3	13	Gear Key 20x16x180	3	20	Lip Seal (ø90xø110x13)	1
5	Bearing Cover Gasket	4	14	Left Helical Gear with Key & Sholder	2			
6	Mechanical Seal	1						
7	Bearing (NJ2218)	4						



YHL 10" Helical Gear Pump



Performance:

Flow rate	250 m ³ /h
Pressure	1 - 15 bar
Temperature	0 - 200 °C
Speed	1 - 450 d/d
Viscosity	100 - 250000 SSU

Technical Features:

- ✓ Helical gear pump
- ✓ 10" flanged threaded connections
- ✓ Designed for medium pressure, high temperature applications
- ✓ Compact design
- ✓ Various material options
- ✓ Various sealing options
- ✓ Pressure relief valve on cover
- ✓ External jacket cover to maintain liquid temperature available
- ✓ 230v, three phase 50/60hz motors available
- ✓ Motor and gearbox drive available
- ✓ Manufactured according to CE regulations

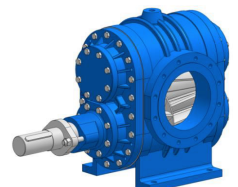
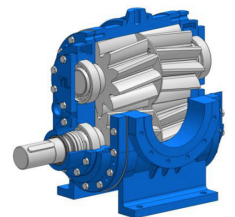
Applications:

- ✓ Fuel oil, diesel fuel and gas oil transfer
- ✓ Molasses transfer
- ✓ Lubrication applications
- ✓ Coolant transfer
- ✓ Any fluids with lubricating properties
- ✓ Not suitable for fluids containing abrasive particles

Material Options:

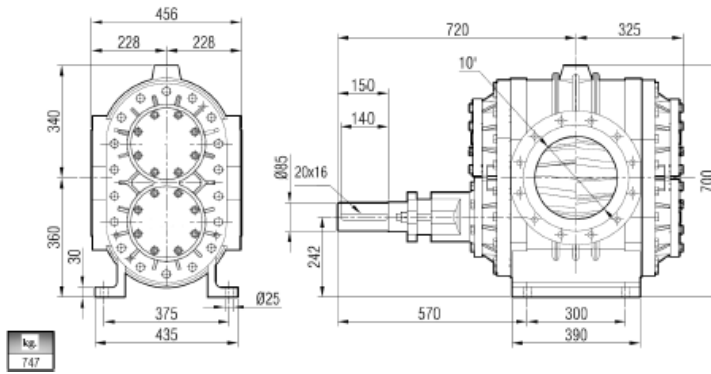
- ✓ Pump body, covers & gears: Cast iron, steel cast, stainless AISI 304/316 cast
- ✓ Bearings: Snbz 12 bronze, bearing, carbon graphite, Ina bushing bearing
- ✓ Sealing: Soft seal, mechanical seal

Capacity & Power Table					
Capacity (Q)	Speed (rpm)	Pressure			Viscosity
		0 Bar	3.5 Bar	7 Bar	
90	100	75 HP	100 HP	100 HP	25000 SSU
135	150	100 HP	100 HP	120 HP	7500 SSU
187	200	100 HP	100 HP	120 HP	2500 SSU
235	250	100 HP	120 HP	150 HP	750 SSU
280	300	75 HP	100 HP	150 HP	100 SSU

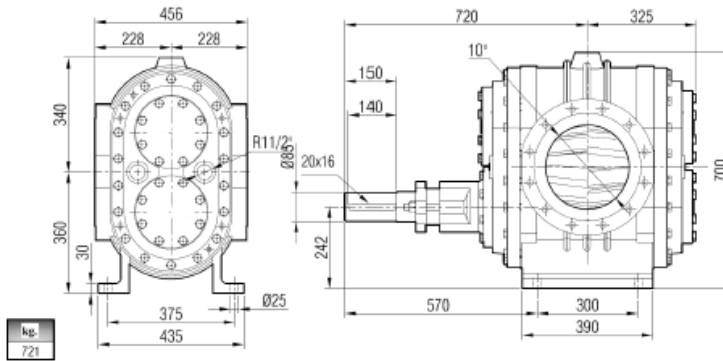




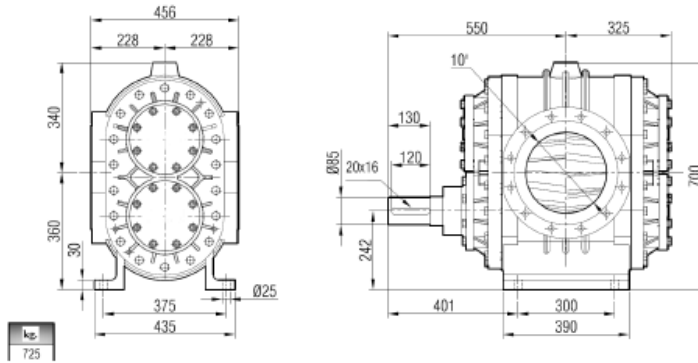
Pump Dimensions - Sealed with soft seal:



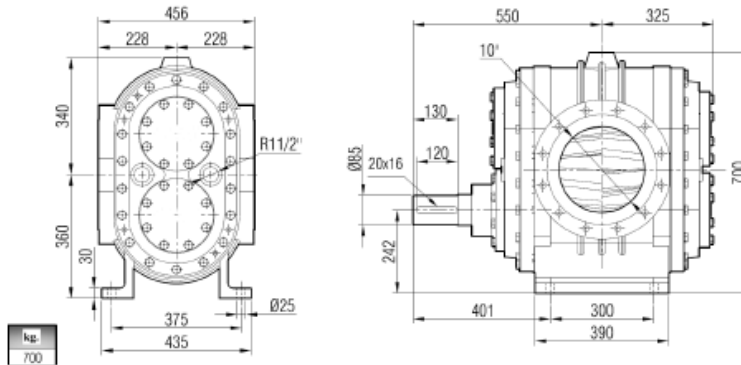
Pump Dimensions - Sealed with soft seal and jacketed:



Pump Dimensions - Sealed with mechanical seal:

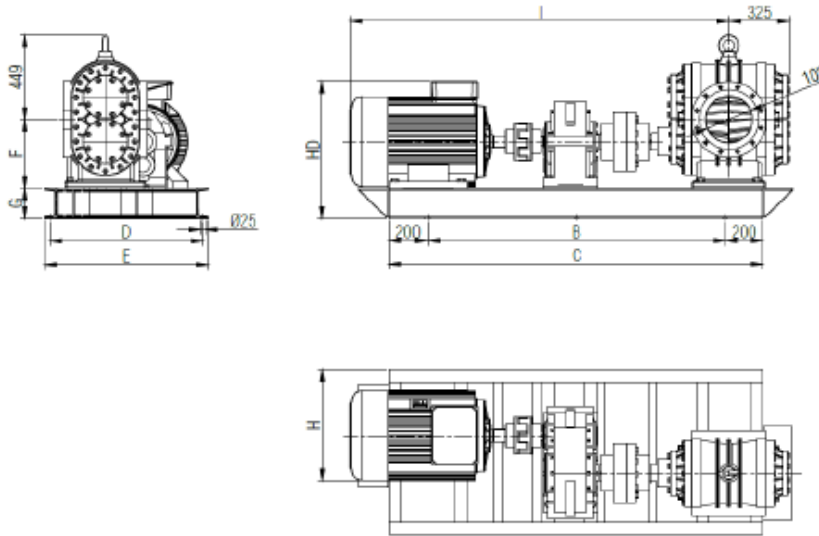


Pump Dimensions - Sealed with mechanical seal and jacketed:





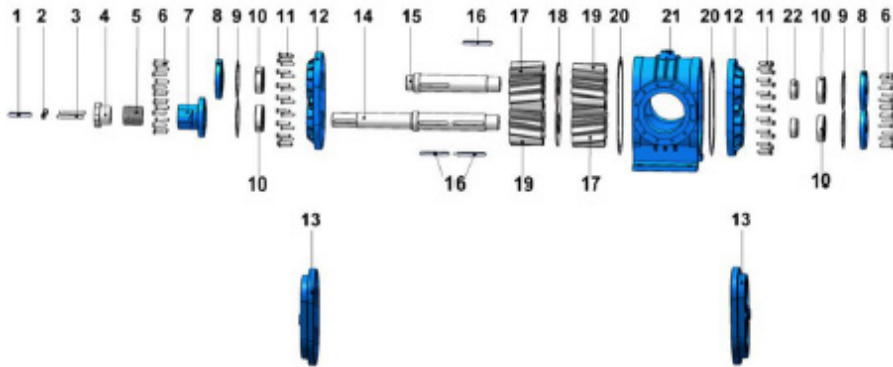
Coupling Dimensions - Gearbox Drive:



Motor Power & Speed		I	HD	H	B	C	D	E	F	G	Kg
75 hp / 55 kw A200-P9 / 250M	PACKED GLAND	2192	731	592	1765	2165	820	880	368	160	1666
	MECHANICALLY SEALED	2022			1595	1995					1638
100 hp / 75 kw A200-P9 / 280M	PACKED GLAND	2253	791	755	1865	2265	1030	1100	360	200	1907
	MECHANICALLY SEALED	2083			1695	2095					1873
120 hp / 90 kw A200-P9 / 280M	PACKED GLAND	2253			1865	2265					1961
MECHANICALLY SEALED	2083	1695			2095	1927					
150 hp / 110 kw A200-P9 / 315S	PACKED GLAND	2470	964	803	1975	2375	1280	1350	378	200	2105
	MECHANICALLY SEALED	2301			1805	2205					2074
175 hp / 132 kw A200-P9 / 315M	PACKED GLAND	2470	1975	2375	2187						
	MECHANICALLY SEALED	2301	1805	2205	2156						
150 hp / 110 kw 2A430-P9 / 315S	PACKED GLAND	2624	969	813	2130	2530	1280	1350	378	200	2495
	MECHANICALLY SEALED	2454			1960	2360					2464
175 hp / 132 kw 2A430-P9 / 315S	PACKED GLAND	2624	2130	2530	2577						
	MECHANICALLY SEALED	2454	1960	2360	2568						

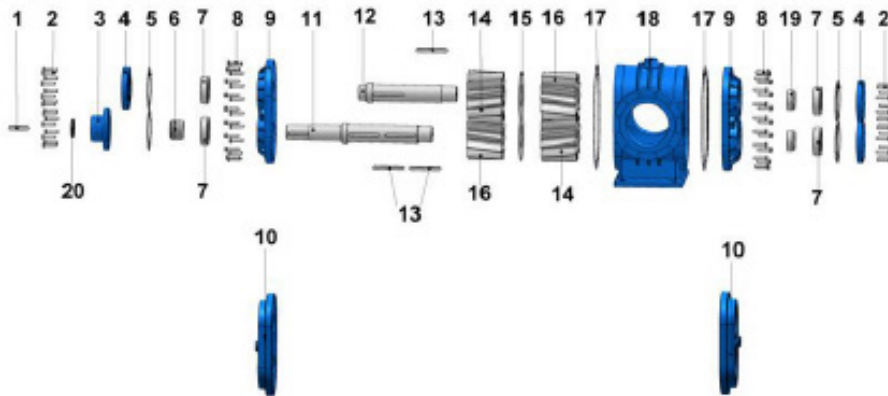


Spare Parts List - Sealed with soft seal:



No.	Part Name.	Qty.	No.	Part Name.	Qty.	No.	Part Name.	Qty.
1	Coupling Key 20x16x140 A	1	9	Bearing Cover Gasket	4	17	Left Helical Gear with Key & Shoulder	2
2	Nut M20	2	10	Bearing (NJ2218)	4	18	Interval Sheet Metal	1
3	Stud M20x160 (For Packing Seal)	2	11	Hex Bolt M16x70	36	19	Right Helical Gear with Key	2
4	Packing Press	1	12	Cover	2	20	Casing Gasket	2
5	Packing	1	13	Jacketed Cover	2	21	Casing	1
6	Hex Bolt M18x70	32	14	Driving Shaft	1	22	Spacer	2
6	Hex Screw M16x60 (For Jacketed Cover)	32						
7	Soft Seal Seat	1	15	Driven Shaft	1			
8	Ball Bearing Cover	3	16	Gear Key 20x16x180	3			

Spare Parts List - Sealed with mechanical seal:



No.	Part Name.	Qty.	No.	Part Name.	Qty.	No.	Part Name.	Qty.
1	Coupling Key 20x16x120 A	1	8	Hex Bolt M16x70	36	15	Interval Sheet Metal	1
2	Hex Bolt M18x70	32	9	Cover	2	16	Right Helical Gear with Key	2
	Hex Bolt M16x60 (For Jacketed Cover)	32	10	Jacketed Cover	2	17	Casing Gasket	2
3	Mechanical Seals	1	11	Driving Shaft	1	18	Casing	1
	Seat		12	Driven Shaft	1	19	Spacer	2
4	Ball Bearing Cover	3	13	Gear Key 20x16x180	3	20	Lip Seal (ø90xø110x13)	1
5	Bearing Cover Gasket	4	14	Left Helical Gear with Key & Sholder	2			
6	Mechanical Seal	1						
7	Bearing (NJ2218)	4						