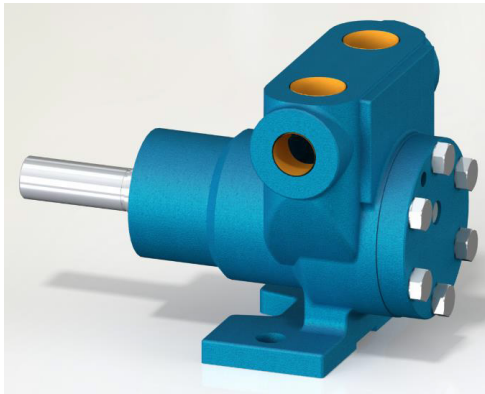




YMK 3/8" Internal Eccentric Gear Pump



Performance:

Flow rate	0.4 m ³ /h
Pressure	1 - 15 bar
Temperature	0 - 100 °C
Speed	1400 d/d
Viscosity	100 - 7500 SSU

Technical Features:

- ✓ Internal eccentric gear pump
- ✓ 3/8" threaded ports
- ✓ Compact design
- ✓ Reliable construction thanks to only two moving parts
- ✓ Various material options
- ✓ Available with external bypass and blind cover
- ✓ 230v, three phase 50/60hz motors available
- ✓ Motor and gearbox drive available
- ✓ Manufactured according to CE regulations

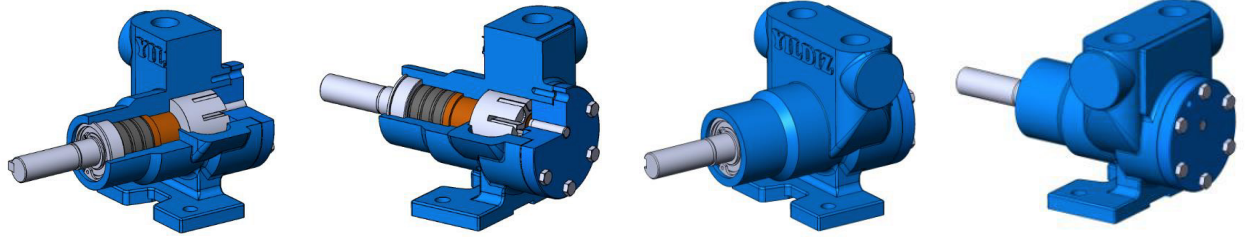
Applications:

- ✓ Fuel oil, diesel fuel and gas oil transfer
- ✓ Small scale thermal oil applications including Marlotherm, Duratherm, Paratherm, Multitherm, Mobiltherm and Dowtherm
- ✓ Lubrication applications
- ✓ Coolant transfer
- ✓ Any transfer of low to medium viscosity fluids with lubricating properties
- ✓ Not suitable for fluids containing abrasive particles

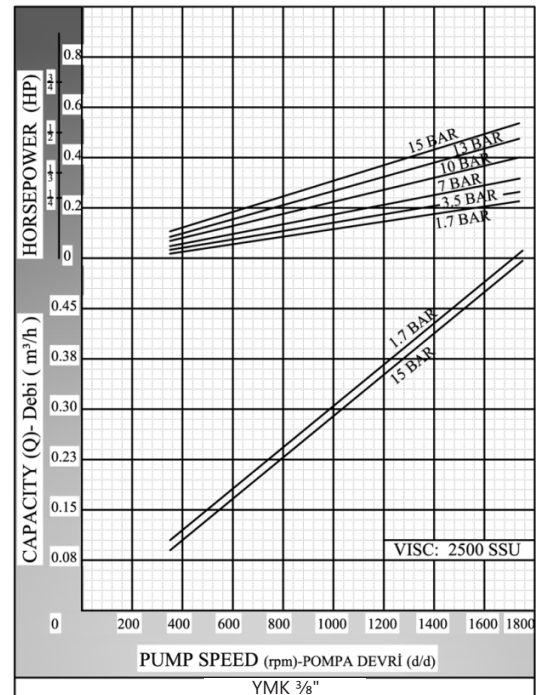
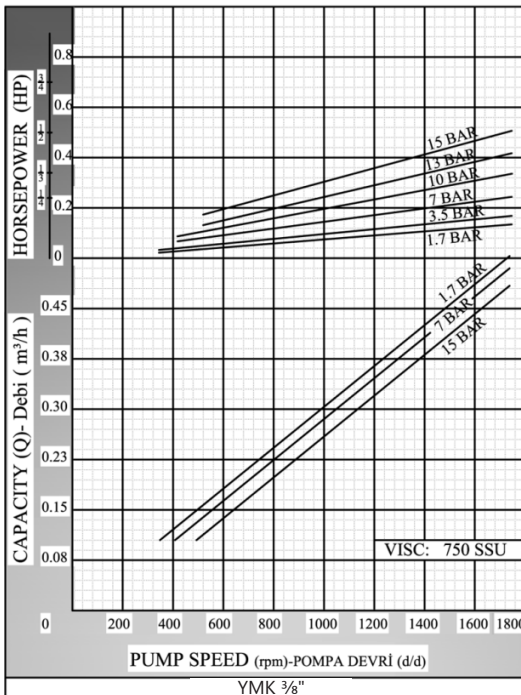
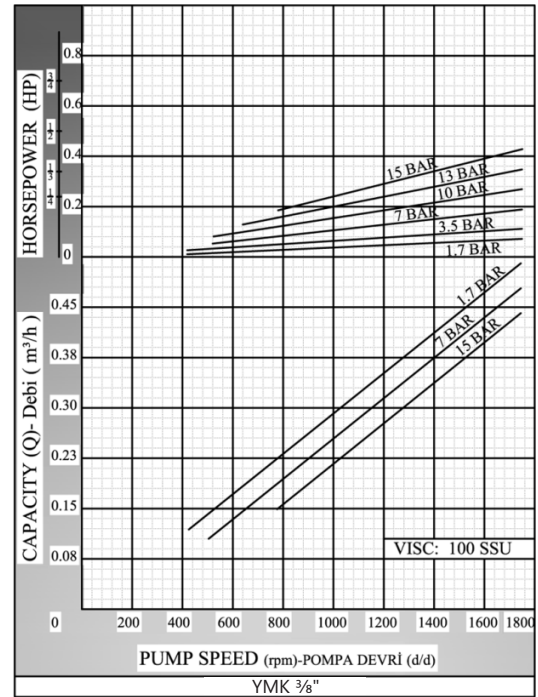
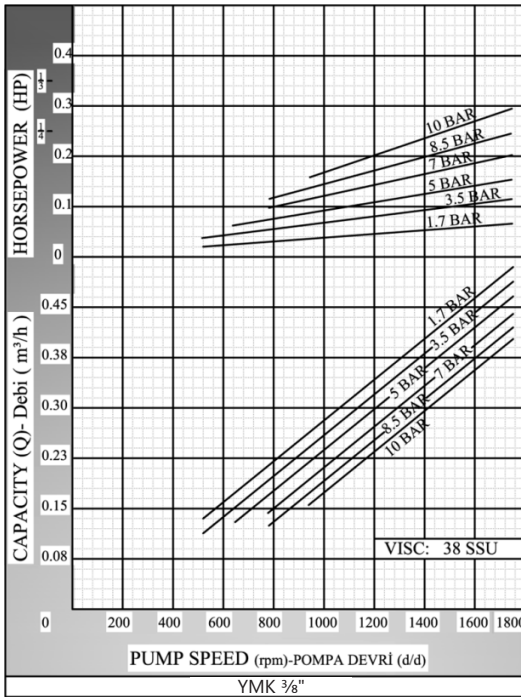
Material Options:

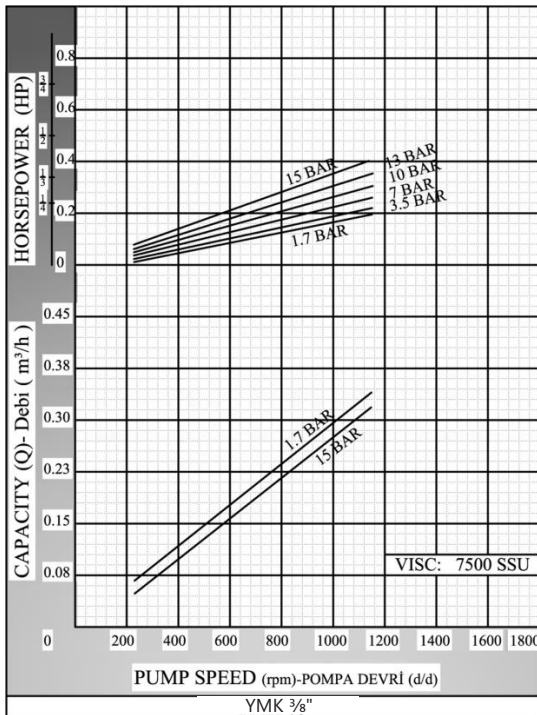
- ✓ Pump body, covers: Cast iron, steel cast
- ✓ Gears: Cast iron, steel cast, Spheroidal cast iron
- ✓ Bearings: Snbz 12 bronze, carbon graphite, silicon carbide, hard metal coated steel
- ✓ Sealing: Lip seal

Capacity & Power Table						
Capacity (Q)	Speed (rpm)	Pressure				Viscosity
		3 Bar	6 Bar	9 Bar	12 Bar	
0.250	900	0.12 HP	0.17 HP	0.25 HP	0.25 HP	750 SSU
0.360	1400	0.17 HP	0.25 HP	0.33 HP	0.33 HP	100 SSU
Motor Powers		Motor Powers		Motor Powers		
0.12 HP	1400 d/d (rpm)	0.12 HP	900 d/d (rpm)	0.50 HP	900 d/d (rpm)	
0.17 HP	1400 d/d (rpm)	0.17 HP	900 d/d (rpm)	Motor Body		
Motor Body		0.33 HP	1400 d/d (rpm)			80
63		0.50 HP	1400 d/d (rpm)			
		Motor Body				
		71				

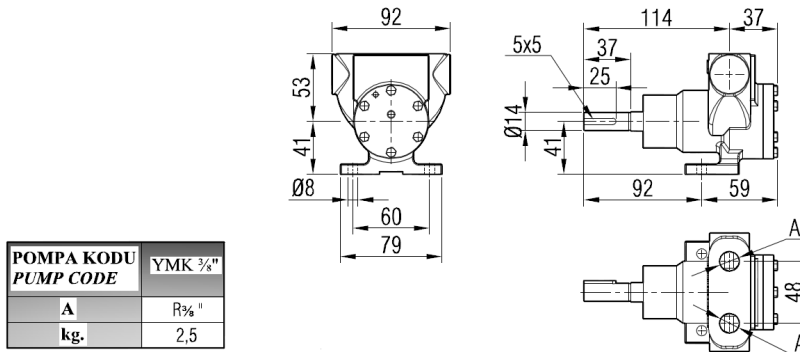


Pump Dimensions - Capacity Graphs:

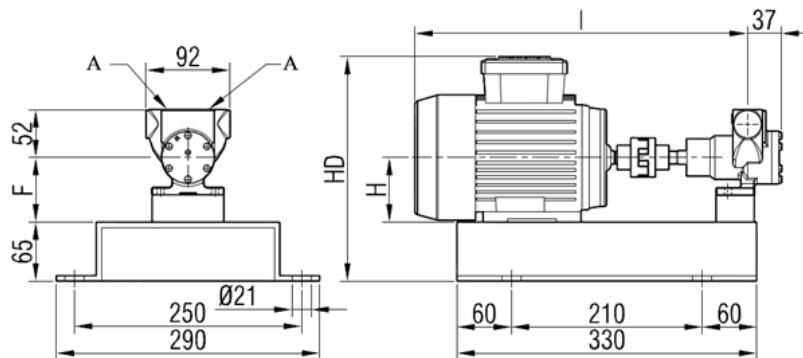




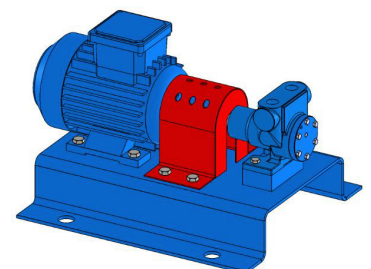
Pump Dimensions:



Coupling Dimensions - Motor and gearbox drive:

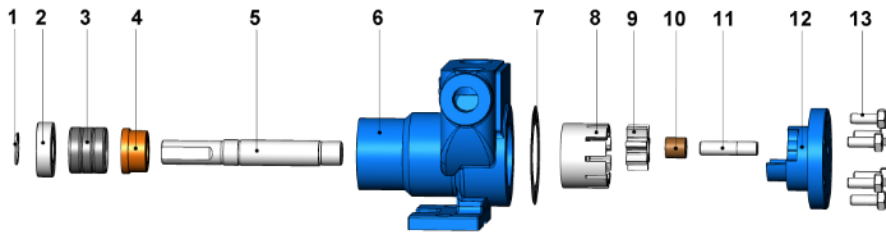


Motor Power & Speed			I	HD	H	F	Kg
0.16 hp / 0.12 kw	1500 d/d (rpm)	MOTOR 63	332	225	63	63	12
0.25 hp / 0.18 kw	1500 d/d (rpm)						12
0.16 hp / 0.12 kw	750 d/d (rpm)	MOTOR 71	366	247	71	71	14
0.25 hp / 0.18 kw	1000 d/d (rpm)						14
0.34 hp / 0.25 kw	1500 d/d (rpm)	MOTOR 80	396	263	80	80	13
0.25 hp / 0.18 kw	750 d/d (rpm)						16
0.34 hp / 0.25 kw	750 d/d (rpm)						17
0.75 hp / 0.55 kw	1000 d/d (rpm)						17
0.75 hp / 0.55 kw	1500 d/d (rpm)						15





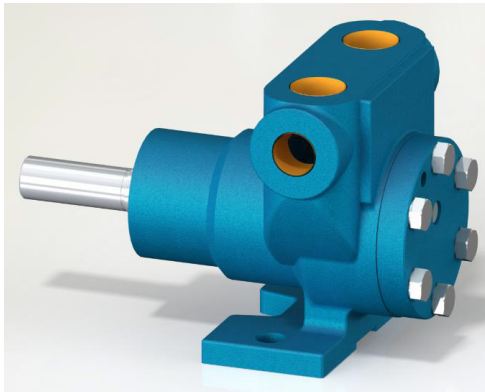
Spare Parts List - Sealed with lip seal:



No.	Part Name.	Qty.
1	External Circlip (ø15)	1
2	Ball Bearing (6002 R2S)	1
3	Lip Seal ø15xø27x7	3
4	Casing Bushing	1
5	Shaft	1
6	Casing	1
7	Cover Gasket	1
8	Rotor Gear	1
9	Idler Gear	1
10	Idler Gear Bushing	1
11	Cover Pin	1
12	Blind Cover	1
13	Hex Bolt M6x16	6



YMK 1/2" Internal Eccentric Gear Pump



Performance:

Flow rate	0.6 m ³ /h
Pressure	1 - 15 bar
Temperature	0 - 100 °C
Speed	1400 d/d
Viscosity	100 - 7500 SSU

Technical Features:

- ✓ Internal eccentric gear pump
- ✓ 1/2" threaded ports
- ✓ Compact design
- ✓ Reliable construction thanks to only two moving parts
- ✓ Various material options
- ✓ Available with external bypass and blind cover
- ✓ 230v, three phase 50/60hz motors available
- ✓ Motor and gearbox drive available
- ✓ Manufactured according to CE regulations

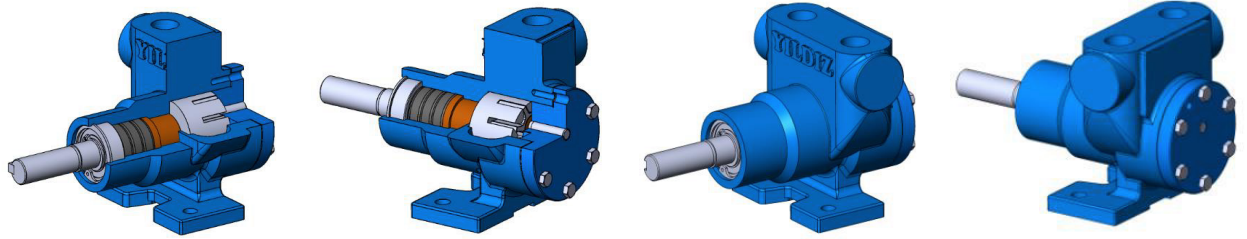
Applications:

- ✓ Fuel oil, diesel fuel and gas oil transfer
- ✓ Small scale thermal oil applications including Marlotherm, Duratherm, Paratherm, Multitherm, Mobiltherm and Dowtherm
- ✓ Lubrication applications
- ✓ Coolant transfer
- ✓ Any transfer of low to medium viscosity fluids with lubricating properties
- ✓ Not suitable for fluids containing abrasive particles

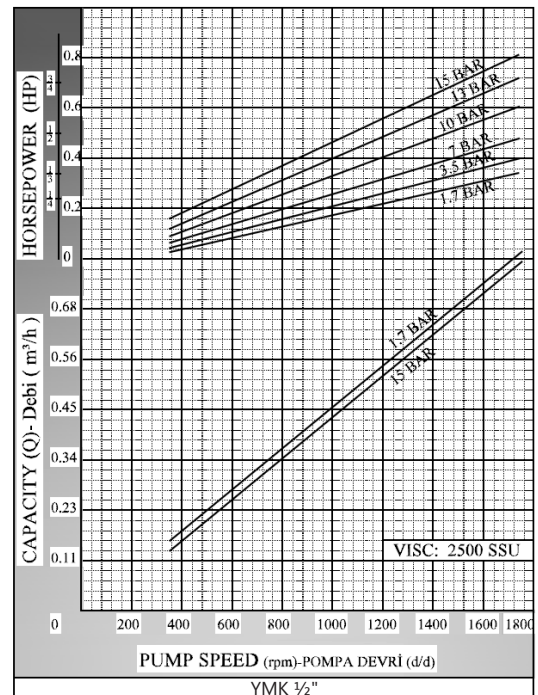
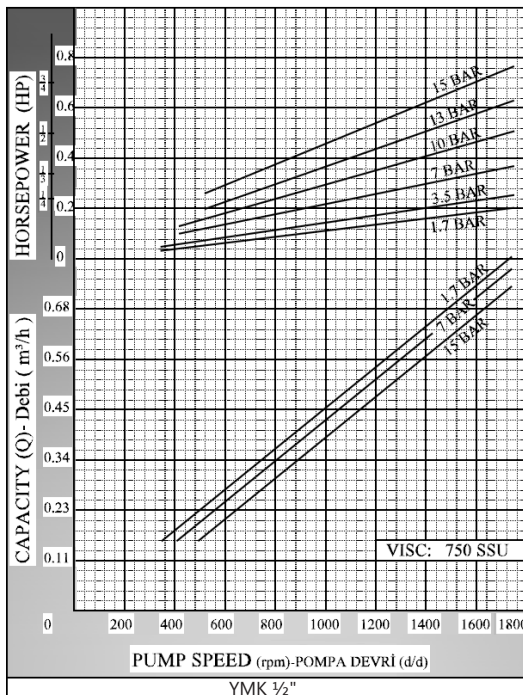
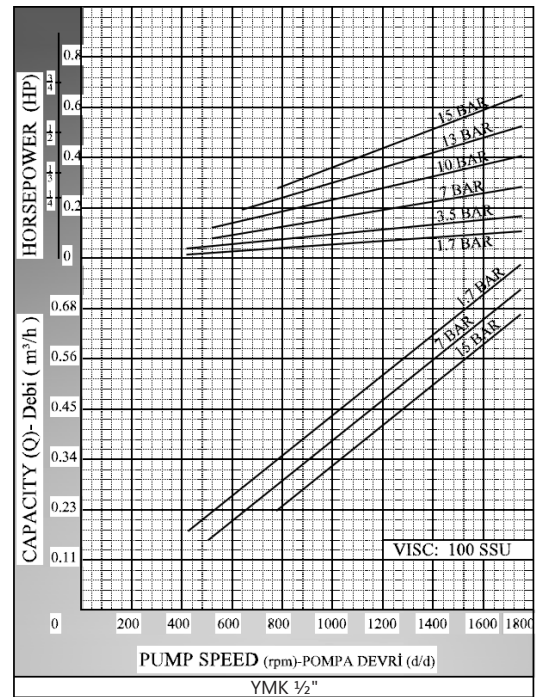
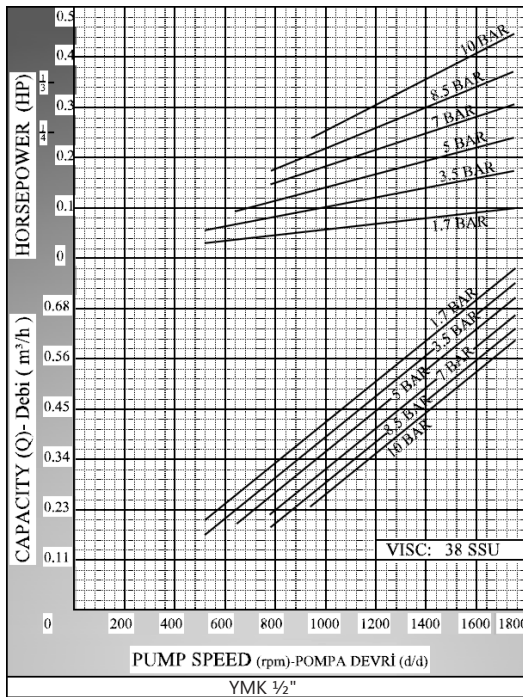
Material Options:

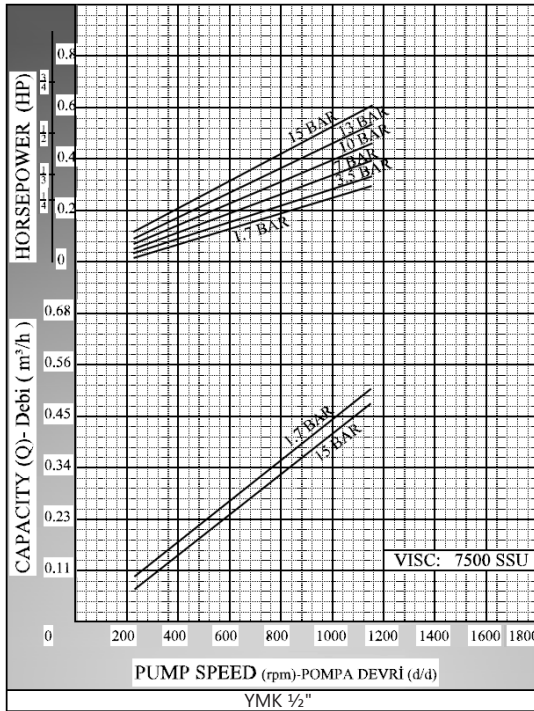
- ✓ Pump body, covers: Cast iron, steel cast
- ✓ Gears: Cast iron, steel cast, Spheroidal cast iron
- ✓ Bearings: Snbz 12 bronze, carbon graphite, silicon carbide, hard metal coated steel
- ✓ Sealing: Lip seal

Capacity & Power Table							
Capacity (Q)	Speed (rpm)	Pressure				Viscosity	
		3 Bar	6 Bar	9 Bar	12 Bar		
0.380	900	0.25 HP	0.33 HP	0.50 HP	0.50 HP	750 SSU	
0.540	1400	0.25 HP	0.33 HP	0.50 HP	0.50 HP	100 SSU	
Motor Powers						Motor Powers	
0.12 HP	900 d/d (rpm)					0.50 HP	900 d/d (rpm)
0.17 HP	900 d/d (rpm)					0.75 HP	900 d/d (rpm)
0.33 HP	1400 d/d (rpm)					0.75 HP	1400 d/d (rpm)
0.50 HP	1400 d/d (rpm)					Motor Body	
Motor Body						80	
71							

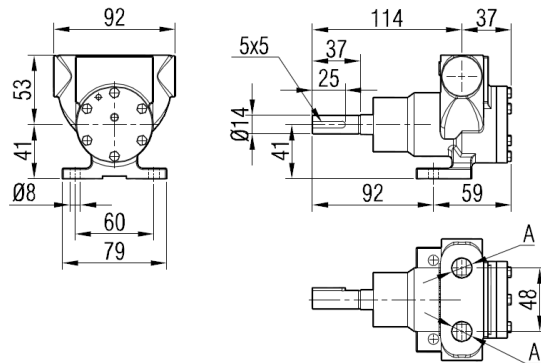


Pump Dimensions - Capacity Graphs:



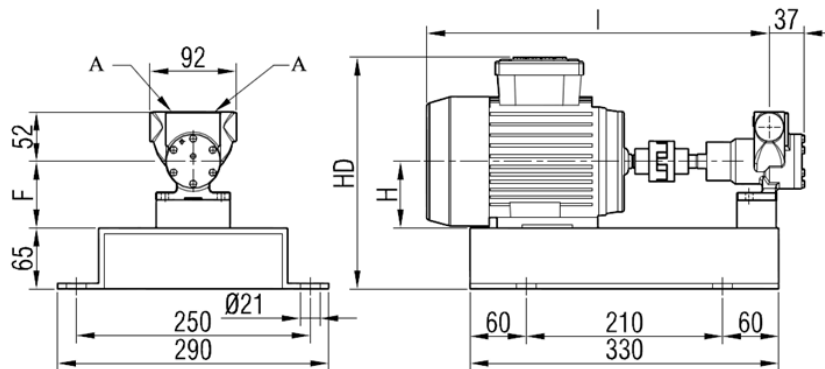


Pump Dimensions:



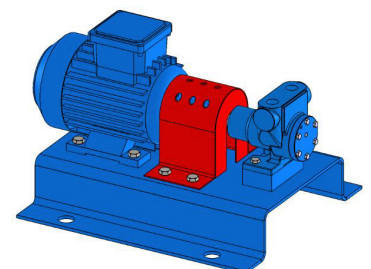
POMPA KODU PUMP CODE	YMK 1/2"
A	R1/2"
kg.	2,5

Coupling Dimensions - Motor and gearbox drive:



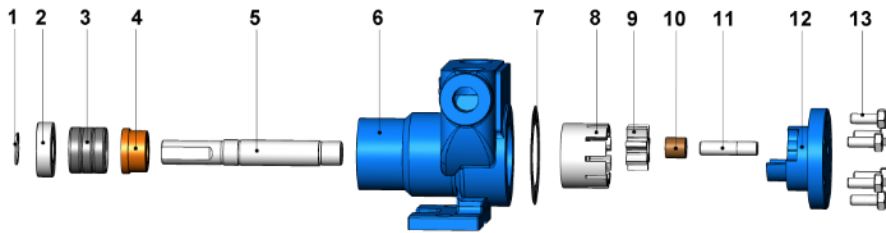
POMPA KODU PUMP CODE	YMK 1/2"
A	R1/2"

Motor Power & Speed			I	HD	H	F	Kg
0.16 hp / 0.12 kw	1500 d/d (rpm)	MOTOR 63	332	225	63	63	12
0.25 hp / 0.18 kw	1500 d/d (rpm)						12
0.16 hp / 0.12 kw	750 d/d (rpm)	MOTOR 71	366	247	71	71	14
0.25 hp / 0.18 kw	1000 d/d (rpm)						14
0.34 hp / 0.25 kw	1500 d/d (rpm)	MOTOR 80	396	263	80	80	13
0.25 hp / 0.18 kw	750 d/d (rpm)						16
0.34 hp / 0.25 kw	750 d/d (rpm)						17
0.75 hp / 0.55 kw	1000 d/d (rpm)						17
0.75 hp / 0.55 kw	1500 d/d (rpm)						17
0.75 hp / 0.55 kw	1500 d/d (rpm)						15





Spare Parts List - Sealed with lip seal:



No.	Part Name.	Qty.
1	External Circlip (ø15)	1
2	Ball Bearing (6002 R2S)	1
3	Lip Seal ø15xø27x7	3
4	Casing Bushing	1
5	Shaft	1
6	Casing	1
7	Cover Gasket	1
8	Rotor Gear	1
9	Idler Gear	1
10	Idler Gear Bushing	1
11	Cover Pin	1
12	Blind Cover	1
13	Hex Bolt M6x16	6



YMK 1" Internal Eccentric Gear Pump



Performance:

Flow rate	2 m ³ /h
Pressure	1 - 14 bar
Temperature	0 - 120 °C
Speed	1400 d/d
Viscosity	100 - 7500 SSU

Technical Features:

- ✓ Internal eccentric gear pump
- ✓ 1" threaded ports
- ✓ Compact design
- ✓ Reliable construction thanks to only two moving parts
- ✓ Various material options
- ✓ Available with external bypass and blind cover
- ✓ 230v, three phase 50/60hz motors available
- ✓ Motor and gearbox drive available
- ✓ Manufactured according to CE regulations

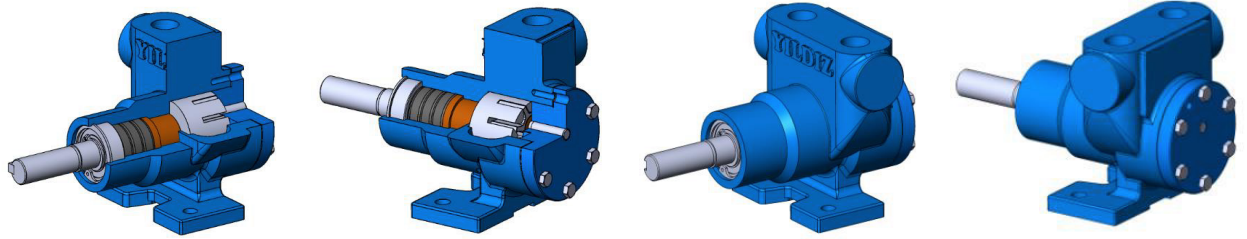
Applications:

- ✓ Fuel oil, diesel fuel and gas oil transfer
- ✓ Small scale thermal oil applications including Marlotherm, Duratherm, Paratherm, Multitherm, Mobiltherm and Dowtherm
- ✓ Lubrication applications
- ✓ Coolant transfer
- ✓ Any transfer of low to medium viscosity fluids with lubricating properties
- ✓ Not suitable for fluids containing abrasive particles

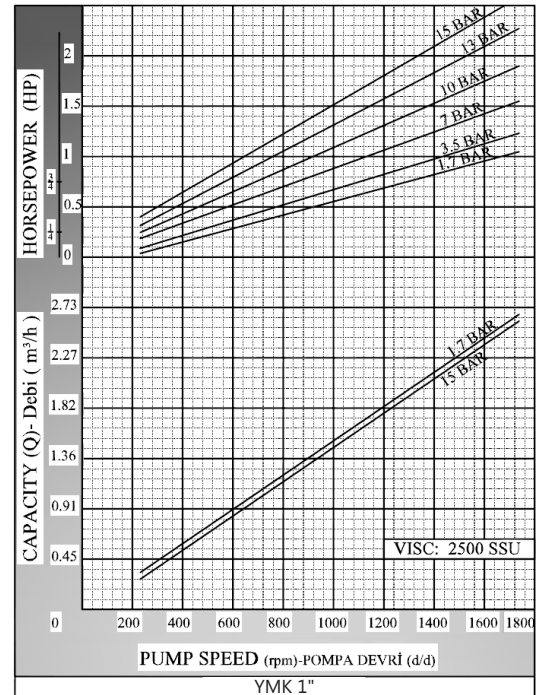
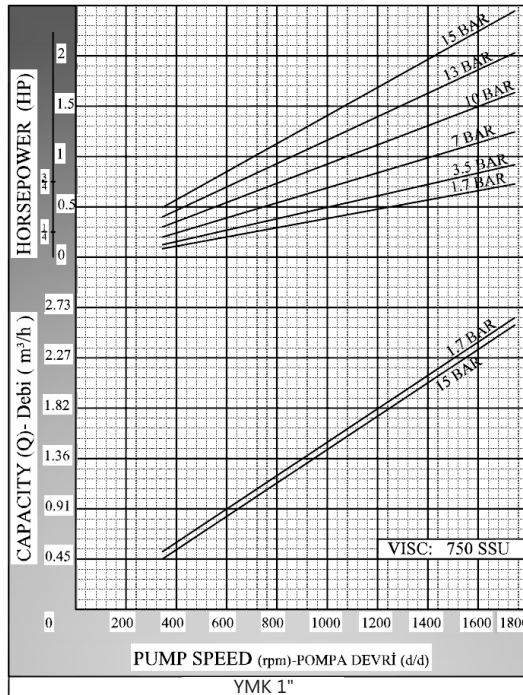
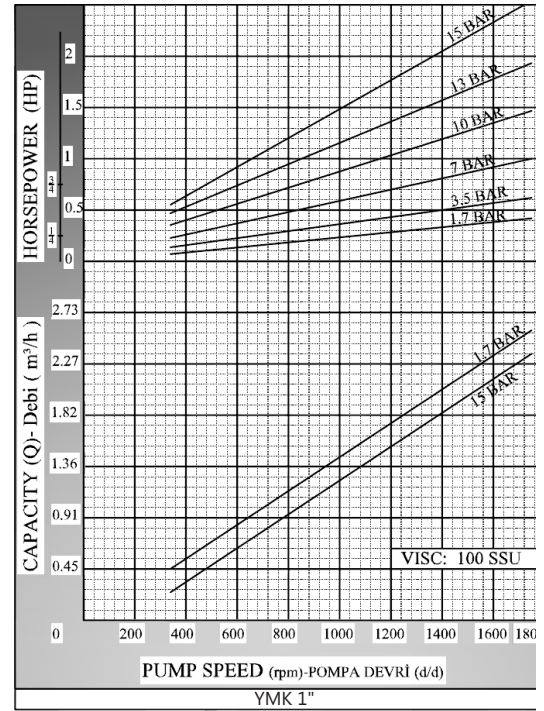
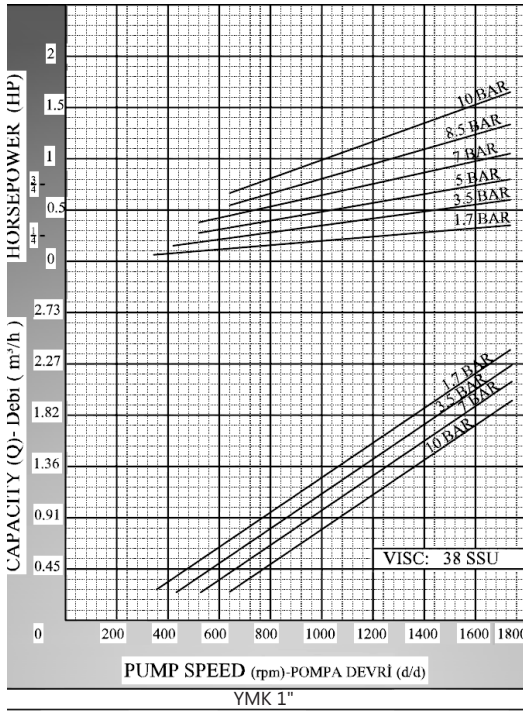
Material Options:

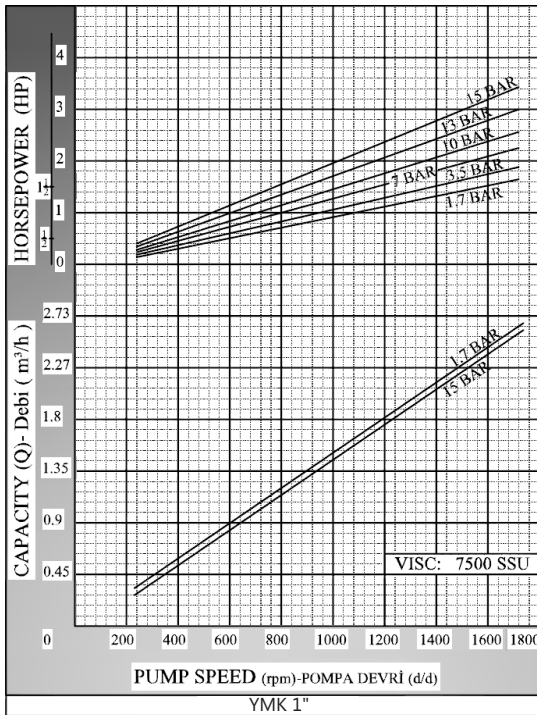
- ✓ Pump body, covers: Cast iron, steel cast
- ✓ Gears: Cast iron, steel cast, Spheroidal cast iron
- ✓ Bearings: Snbz 12 bronze, carbon graphite, silicon carbide, hard metal coated steel
- ✓ Sealing: Lip seal

Capacity & Power Table						
Capacity (Q)	Speed (rpm)	Pressure				Viscosity
		2.5 Bar	5 Bar	7.5 Bar	10 Bar	
1.2	900	0.5 HP	0.75 HP	0.75 HP	1 HP	750 SSU
2	1400	0.75 HP	0.1 HP	0.1 HP	1.5 HP	100 SSU
Motor Powers			Motor Powers			
0.5 HP	900 d/d (rpm)			1 HP	900 d/d (rpm)	
0.75 HP	900 d/d (rpm)			1.5 HP	900 d/d (rpm)	
0.75 HP	1400 d/d (rpm)			1.5 HP	1400 d/d (rpm)	
1 HP	1400 d/d (rpm)			Motor Body		
Motor Body			90			
80						

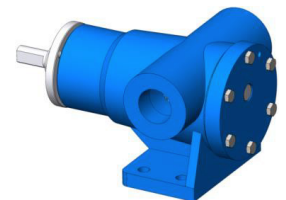
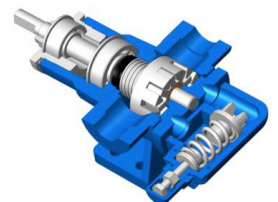
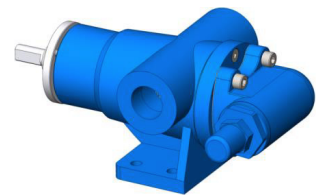
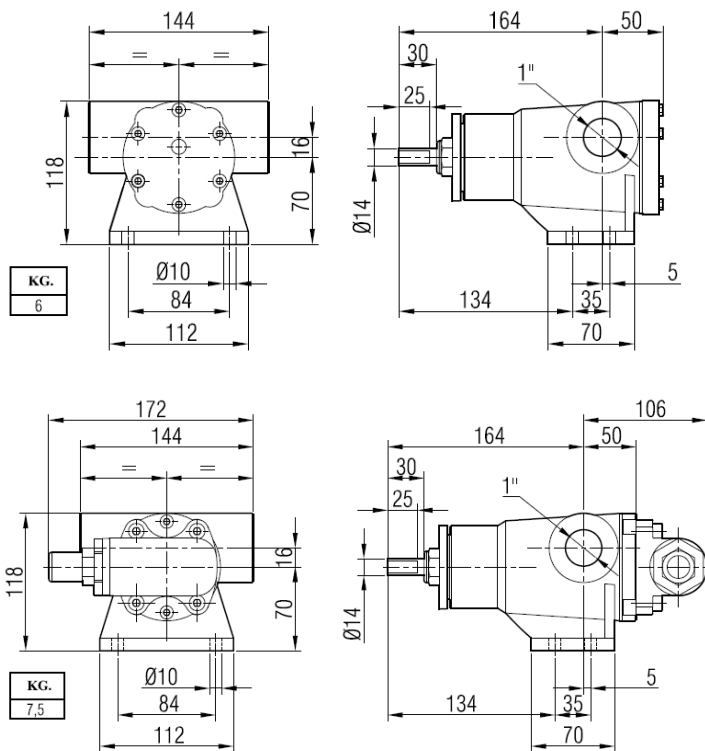


Pump Dimensions - Capacity Graphs:

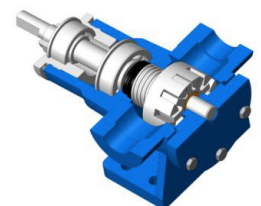
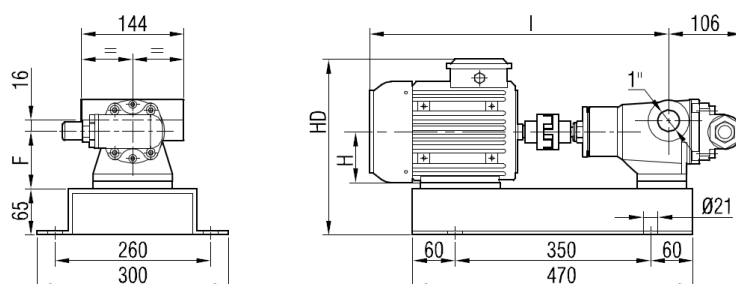




Pump Dimensions:

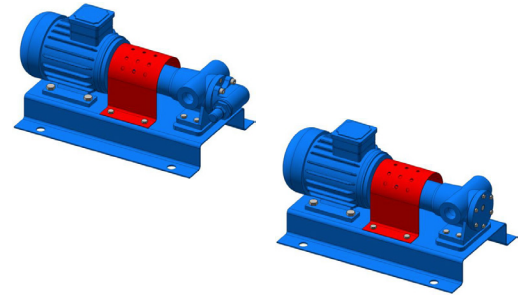


Coupling Dimensions - Motor and gearbox drive:

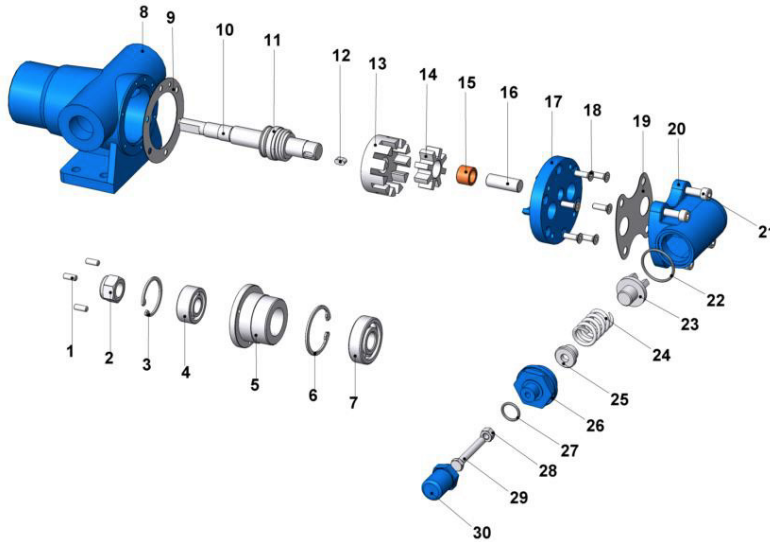




Motor Power & Speed			I	HD	H	F	Kg	
0.5-0.75 hp / 0.37-0.55 kw	0.75-1 hp / 0.55-0.75 kw	MOTOR 80	471	263	80	80	26	26
900 d/d (rpm)	1400 d/d (rpm)						28	27
1 hp / 0.75 kw	1.5 hp / 1.1 kw	MOTOR 90S	501	281	90	90	30	
900 d/d (rpm)	1400 d/d (rpm)						32	
1.5 hp / 1.1 kw	2 hp / 1.5 kw	MOTOR 90L	553				32	
900 d/d (rpm)	1400 d/d (rpm)							

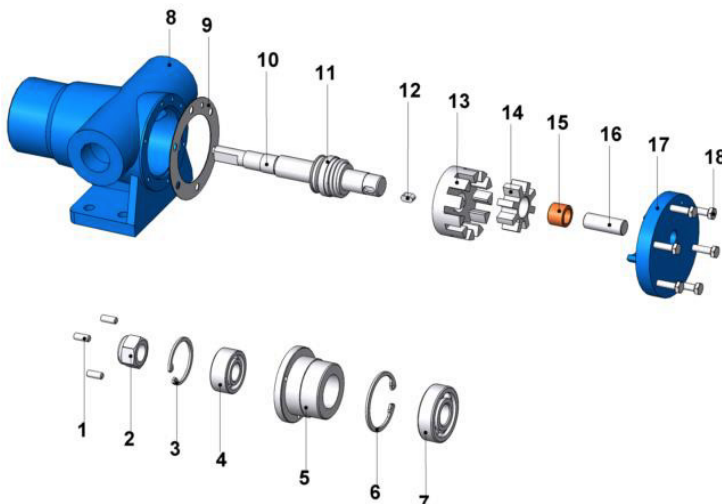


Spare Parts List - Sealed with mechanical seal, and pressure relief valve on cover:



No.	Part Name.	Qty.	No.	Part Name.	Qty.	No.	Part Name.	Qty.
1	Grub Screw M6x16	3	11	Mechanical Seal Ø20	1	21	Inbus Bolt M8x25	4
2	Pulley Nut	1	12	Key 6x6x12 A	1	22	Relief Valve O-Ring	1
3	Pulley Internal Circlip (Ø40)	1	13	Rotor Gear	1	23	Valve	1
4	Ball Bearing (62203-2RS)	1	14	Idler Gear	1	24	Spring	1
5	Pulley	1	15	Idler Gear Bushing	1	25	Bypass Washer	1
6	Casing Internal Circlip (Ø52)	1	16	Cover Pin	1	26	Bypass Cover	1
7	Bearing (6304-2RS)	1	17	Cover (w/ Bypass Inlets)	1	27	Bypass O-Ring	1
8	Casing	1	18	Countersunk Bolt M6x20	6	28	M8 Nut	1
9	Cover Gasket	1	19	Relief Valve Gasket	1	29	Adjusting Screw M8x55	1
10	Shaft	1	20	Pressure Relief Valve - Bypass	1	30	Cap	1

Spare Parts List - Sealed with mechanical seal, and with blind cover:



No.	Part Name.	Qty.
1	Grub Screw M6x16	3
2	Pulley Nut	1
3	Pulley Internal Circlip (Ø40)	1
4	Ball Bearing (62203-2RS)	1
5	Pulley	1
6	Casing Internal Circlip (Ø52)	1
7	Bearing (6304-2RS)	1
8	Casing	1
9	Cover Gasket	1
10	Shaft	1
11	Mechanical Seal Ø20	1
12	Key 6x6x12 A	1
13	Rotor Gear	1
14	Idler Gear	1
15	Idler Gear Bushing	1
16	Cover Pin	1
17	Blind Cover	1
18	Hex Bolt M6x20	6



YMK 1½" Internal Eccentric Gear Pump



Performance:

Flow rate	5.7 m³/h
Pressure	1 - 14 bar
Temperature	0 - 200 °C
Speed	1400 d/d
Viscosity	100 - 7500 SSU

Technical Features:

- ✓ Internal eccentric gear pump
- ✓ 1½" threaded ports
- ✓ Compact design
- ✓ Reliable construction thanks to only two moving parts
- ✓ Various material options
- ✓ Available with external bypass and blind cover
- ✓ 230v, three phase 50/60hz motors available
- ✓ Motor and gearbox drive available
- ✓ Manufactured according to CE regulations

Applications:

- ✓ Fuel oil, diesel fuel and gas oil transfer
- ✓ Small scale thermal oil applications including Marlotherm, Duratherm, Paratherm, Multitherm, Mobiltherm and Dowtherm
- ✓ Lubrication applications
- ✓ Coolant transfer
- ✓ Any transfer of low to medium viscosity fluids with lubricating properties
- ✓ Not suitable for fluids containing abrasive particles

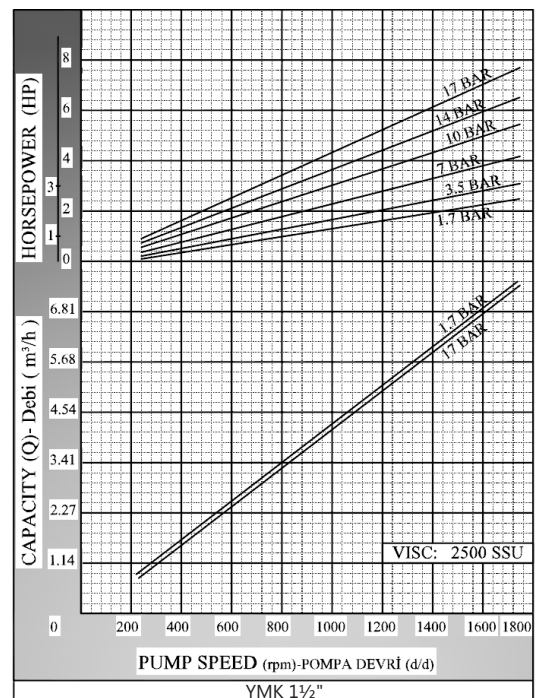
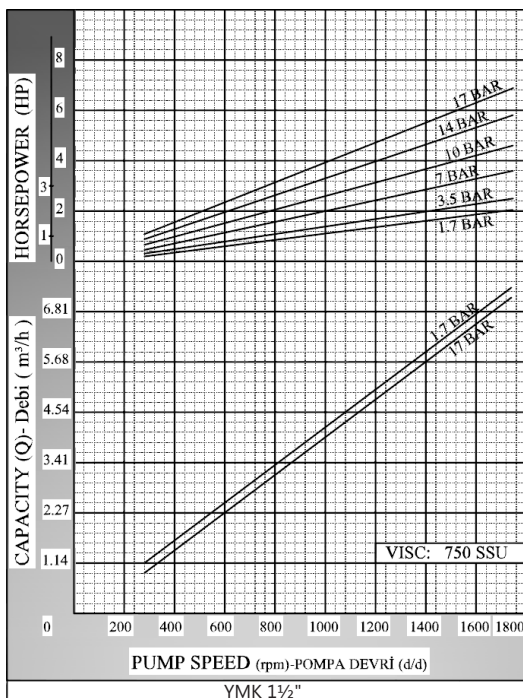
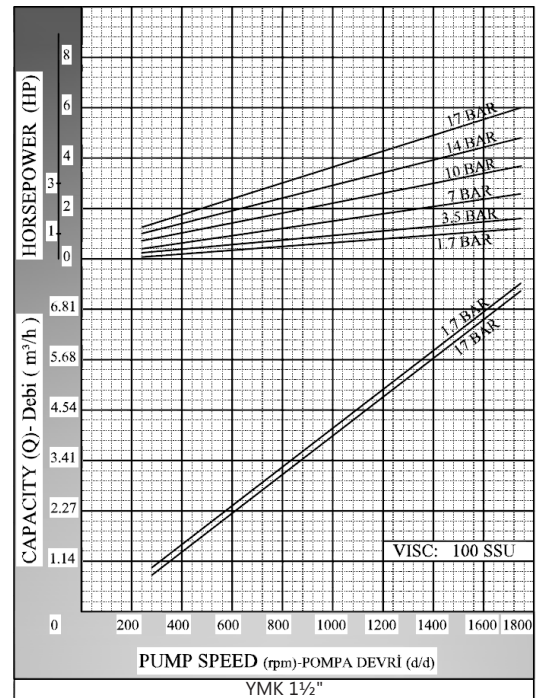
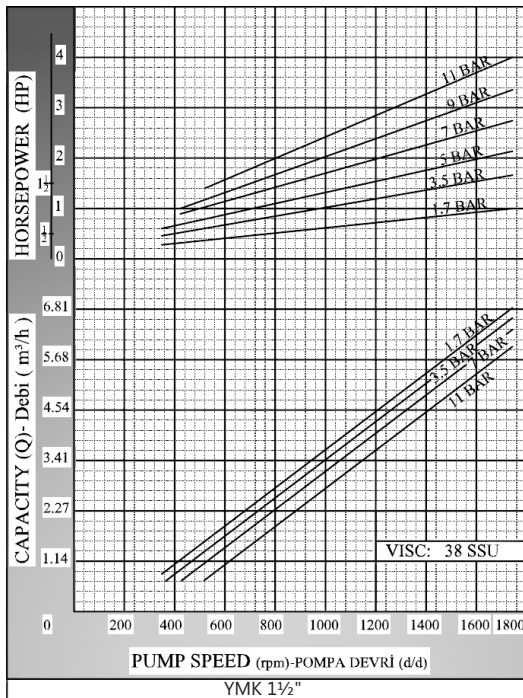
Material Options:

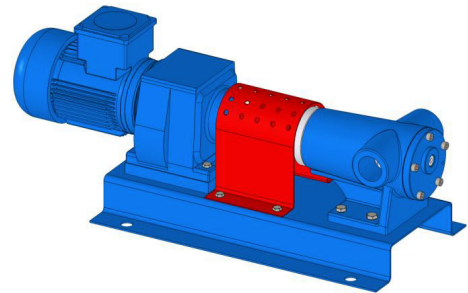
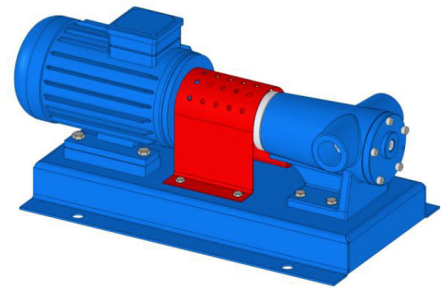
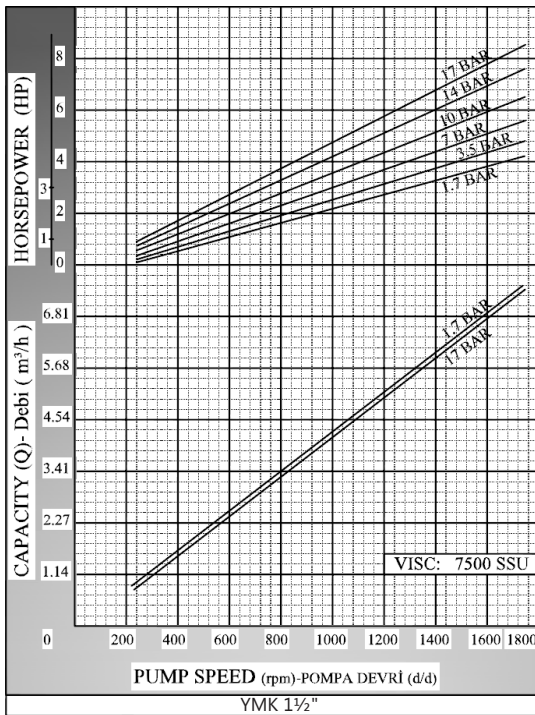
- ✓ Pump body, covers: Cast iron, steel cast
- ✓ Gears: Cast iron, steel cast, Spheroidal cast iron
- ✓ Bearings: Snbz 12 bronze, carbon graphite, silicon carbide, hard metal coated steel
- ✓ Sealing: Lip seal

Capacity & Power Table						
Capacity (Q)	Speed (rpm)	Pressure				Viscosity
		3 Bar	6 Bar	9 Bar	12 Bar	
3.7	900	1.5 HP	2 HP	3 HP	4 HP	750 SSU
5.7	1400	2 HP	3 HP	4 HP	5.5 HP	100 SSU
Motor Powers		Motor Powers		Motor Powers		
1.5 HP	900 d/d (rpm)	1.5 HP	750 d/d (rpm)	2 HP	750 d/d (rpm)	
1.5 HP	1400 d/d (rpm)	2 HP	900 d/d (rpm)	3 HP	900 d/d (rpm)	
2 HP	1400 d/d (rpm)	3 HP	1400 d/d (rpm)	5.5 HP	1400 d/d (rpm)	
Motor Body		Motor Body		Motor Body		
90		100		112		

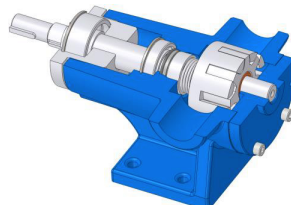
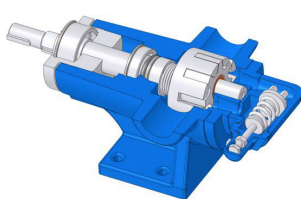
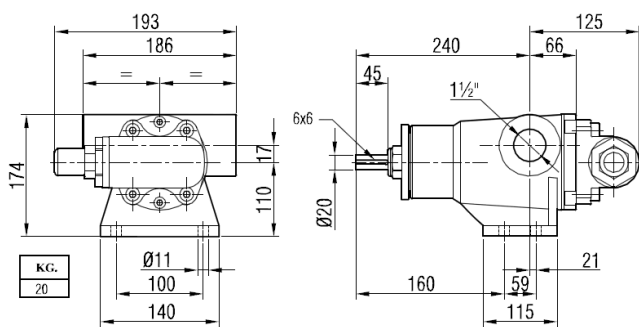
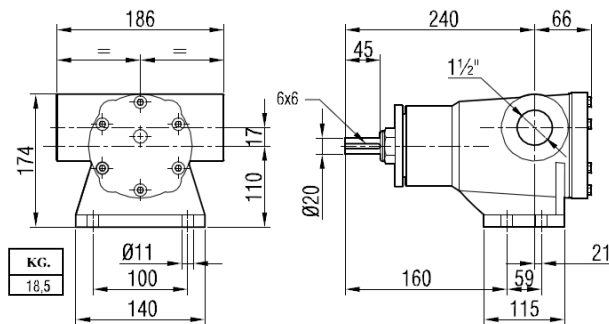


Pump Dimensions - Capacity Graphs:



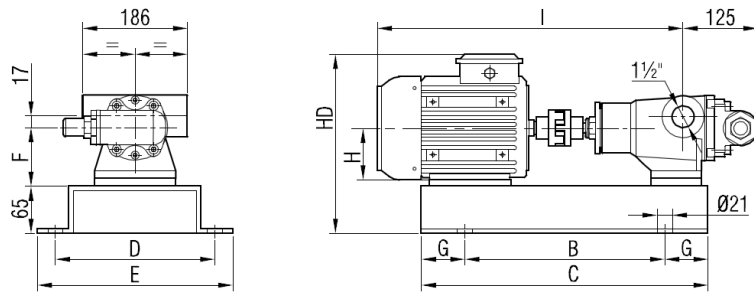


Pump Dimensions:

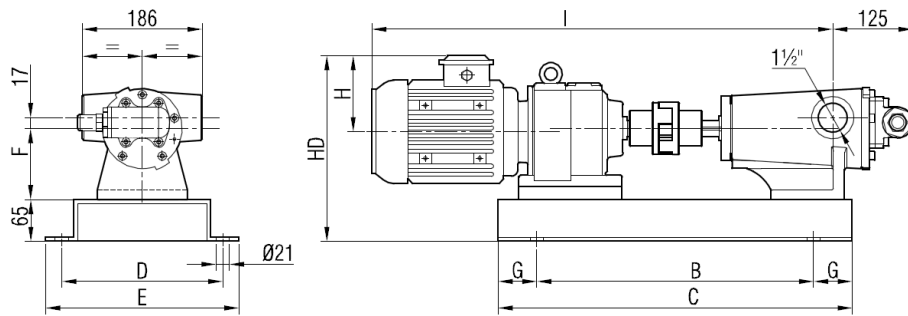




Coupling Dimensions - Motor and gearbox drive:



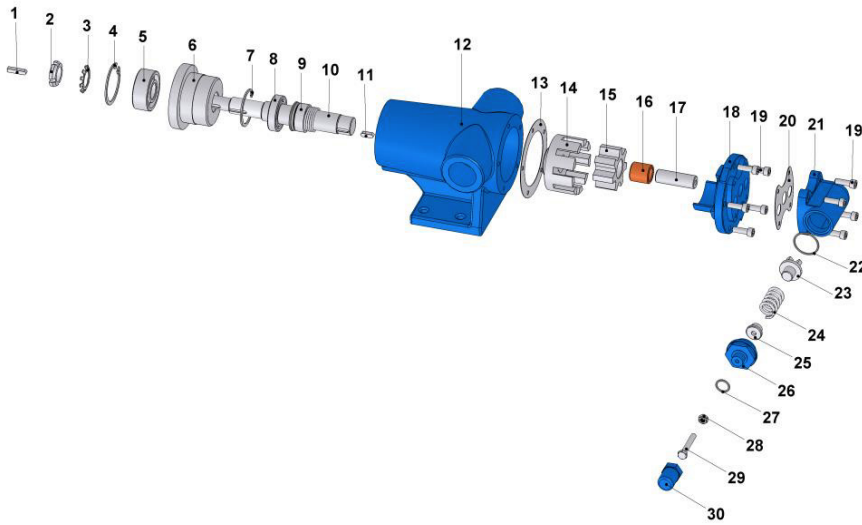
Motor Power & Speed			I	HD	H	B	C	D	E	F	G	Kg			
1 HP / 0.75 kw	1.5 HP / 1.1 kw		569	301	90	430	550	260	300	110	60	44			
900 d/d (rpm)	1400 d/d (rpm)											MOTOR 90S			
1.5 HP / 1.1 kw	2 HP / 1.5 kw		621	310	100	420	620	310	350	112	100	46			
900 d/d (rpm)	1400 d/d (rpm)											MOTOR 90L			
1.5 HP / 1.1 kw	2 HP / 1.5 kw	3-4 HP / 2.2-3 kw	667	310	100	420	620	310	350	112	100	58	58	56	59
750 d/d (rpm)	900 d/d (rpm)	1400 d/d (rpm)										MOTOR 100L			
2 HP / 1.5 kw	3 HP / 2.2 kw	5.5 HP / 4 kw	694	312	112	420	620	310	350	112	100	64	64	65	
750 d/d (rpm)	900 d/d (rpm)	1400 d/d (rpm)										MOTOR 112M			



Motor Power & Speed			I	HD	H	B	C	D	E	F	G	Kg
1 HP / 0.75 kw	40/240 d/d (rpm)	IRAM52/80M	708	288	118	430	550	260	300	110	60	57
1.5 HP / 1.1 kw	60/382 d/d (rpm)	IRAM52/90S	727	302	132							60
		30/104 d/d (rpm)	IRAM62/90S	778	301	420	620	310	350	115	100	76
2 HP / 1.5 kw	30/197 d/d (rpm)	IRAM62/90L	803	78								

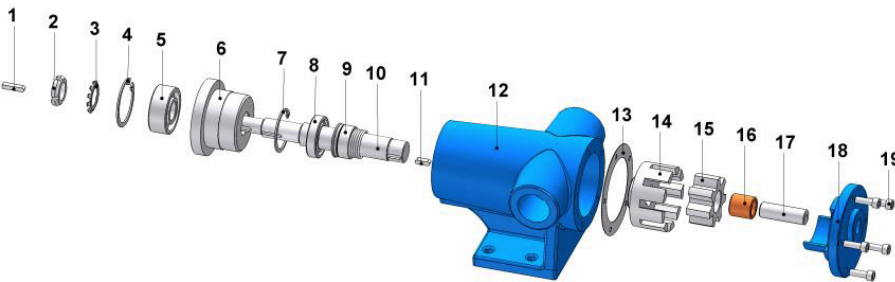


Spare Parts List - Sealed with mechanical seal, and pressure relief valve on cover:



No.	Part Name.	Qty.	No.	Part Name.	Qty.	No.	Part Name.	Qty.
1	Coupling Key 6x6x30 AB	1	11	Key 6x6x30 A	1	21	Pressure Relief Valve - Bypass	1
2	Lock Nut	1	12	Casing	1	22	Bypass O-Ring	1
3	Lock Washer	1	13	Cover Gasket	1	23	Valve	1
4	Pulley Internal Circlip (ø62)	1	14	Rotor Gear	1	24	Spring	1
5	Bearing (62305-2RS)	1	15	Idler Gear	1	25	Washer	1
6	Pulley	1	16	Idler Gear Bushing	1	26	Bypass Cover	1
7	Casing Internal Circlip (ø55)	1	17	Cover Pin	1	27	Cap O-Ring	1
8	Ball Bearing (6006-2RS)	1	18	Cover (w/ Bypass Inlets)	1	28	Nut M8	1
9	Mechanical Seal Ø30	1	19	Inbus Bolt M8x25	9	29	Adjusting Screw M8x55	1
10	Shaft	1	20	Relief Valve Gasket	1	30	Cap	1

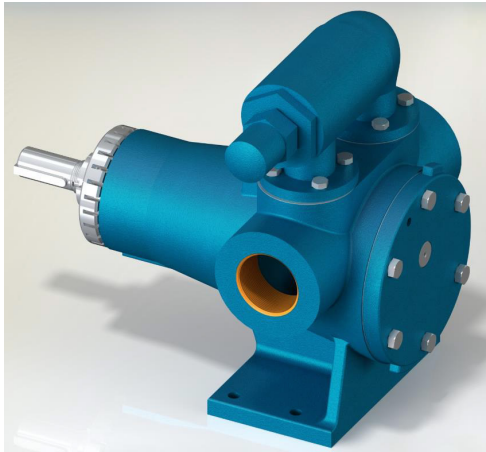
Spare Parts List - Sealed with mechanical seal, and with blind cover:



No.	Part Name.	Qty.
1	Coupling Key 6x6x45 AB	1
2	Lock Nut	1
3	Lock Washer	1
4	Internal Circlip (ø62)	1
5	Ball Bearing (62305-2RS)	1
6	Pulley	1
7	Casing Internal Circlip (ø55)	1
8	Ball Bearing (6006-2RS)	1
9	Mechanical Seal Ø30	1
10	Shaft	1
11	Rotor Key 6x6x30 A	1
12	Casing	1
13	Cover Gasket	1
14	Rotor Gear	1
15	Idler Gear	1
16	Idler Gear Bushing	1
17	Cover Pin	1
18	Cover	1
19	Inbus Bolt M8x25	5



YMK 2" Internal Eccentric Gear Pump



Performance:

Flow rate	9 m ³ /h
Pressure	1 - 12 bar
Temperature	0 - 200 °C
Speed	1400 d/d
Viscosity	100 - 7500 SSU

Technical Features:

- ✓ Internal eccentric gear pump
- ✓ 2" threaded ports
- ✓ Compact design
- ✓ Reliable construction thanks to only two moving parts
- ✓ Various material options
- ✓ Available with external bypass and blind cover
- ✓ 230v, three phase 50/60hz motors available
- ✓ Motor and gearbox drive available
- ✓ Manufactured according to CE regulations

Applications:

- ✓ Fuel oil, diesel fuel and gas oil transfer
- ✓ Small scale thermal oil applications including Marlotherm, Duratherm, Paratherm, Multitherm, Mobiltherm and Dowtherm
- ✓ Lubrication applications
- ✓ Coolant transfer
- ✓ Any transfer of low to medium viscosity fluids with lubricating properties
- ✓ Not suitable for fluids containing abrasive particles

Material Options:

- ✓ Pump body, covers: Cast iron, steel cast
- ✓ Gears: Cast iron, steel cast, Spheroidal cast iron
- ✓ Bearings: Snbz 12 bronze, carbon graphite, silicon carbide, hard metal coated steel
- ✓ Sealing: Lip seal

Capacity & Power Table						
Capacity (Q)	Speed (rpm)	Pressure				Viscosity
		3 Bar	6 Bar	9 Bar	12 Bar	
2.5	250	3 HP	3 HP	4 HP	5.5 HP	7500 SSU
3.5	350	3 HP	3 HP	4 HP	5.5 HP	2500 SSU
4.5	450	2 HP	3 HP	4 HP	4 HP	750 SSU
7.5	750	2 HP	3 HP	4 HP	5.5 HP	750 SSU
9	900	3 HP	4 HP	5.5 HP	7.5 HP	100 SSU

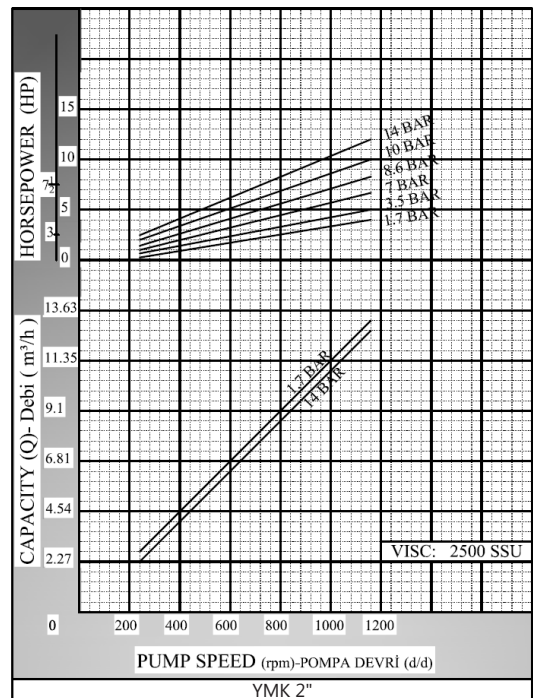
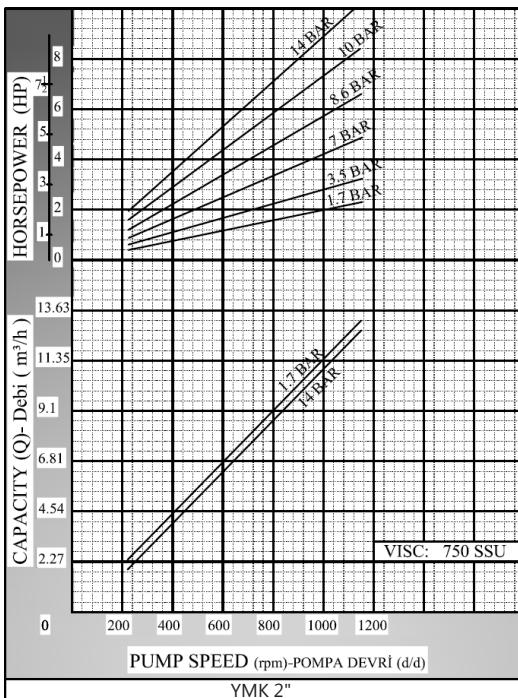
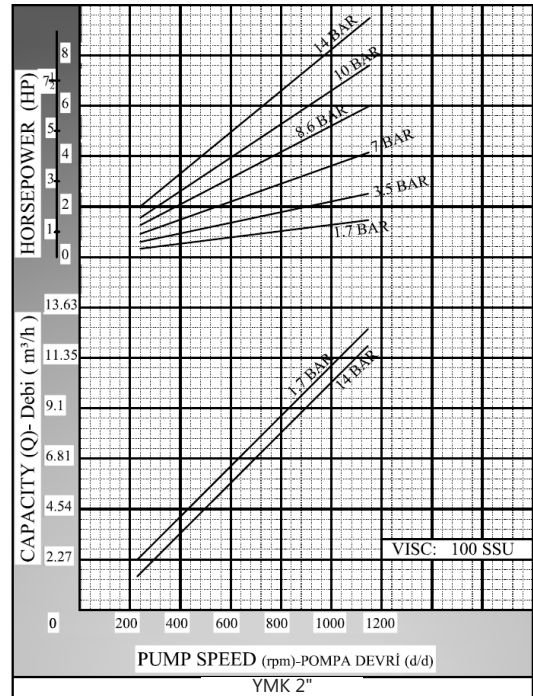
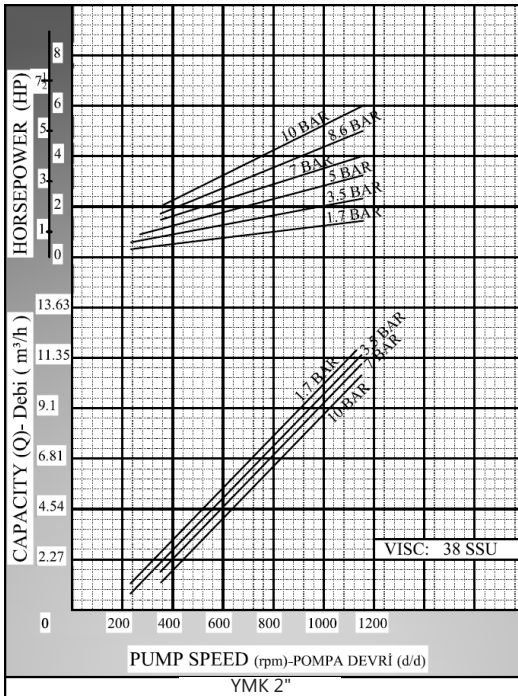
Motor Powers	
2 HP	750 d/d (rpm)
3 HP	900 d/d (rpm)
Motor Body	
112	

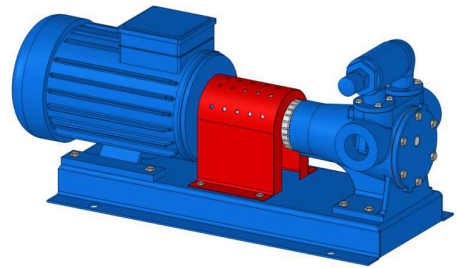
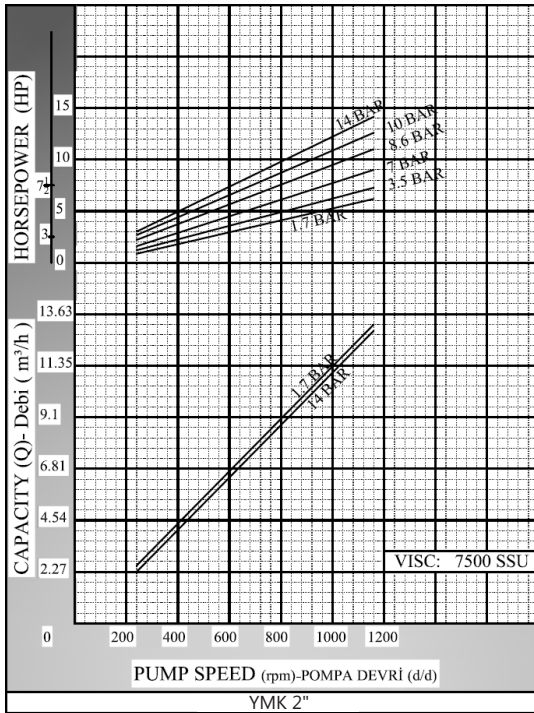
Motor Powers	
3 HP	750 d/d (rpm)
4 HP	750 d/d (rpm)
4 HP	900 d/d (rpm)
5.5 HP	900 d/d (rpm)
7.5 HP	900 d/d (rpm)
Motor Body	
132	

Motor Powers	
5.5 HP	750 d/d (rpm)
Motor Body	
160	

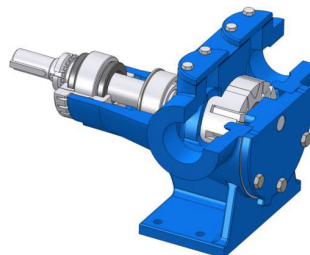
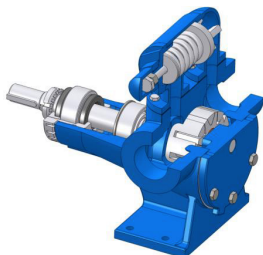
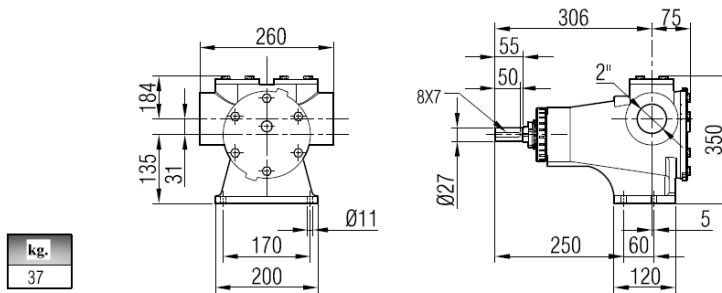
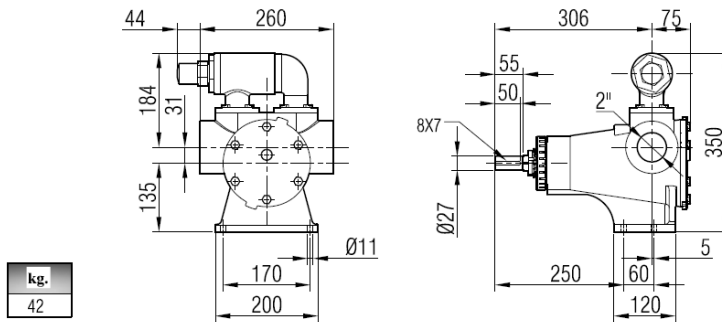


Pump Dimensions - Capacity Graphs:



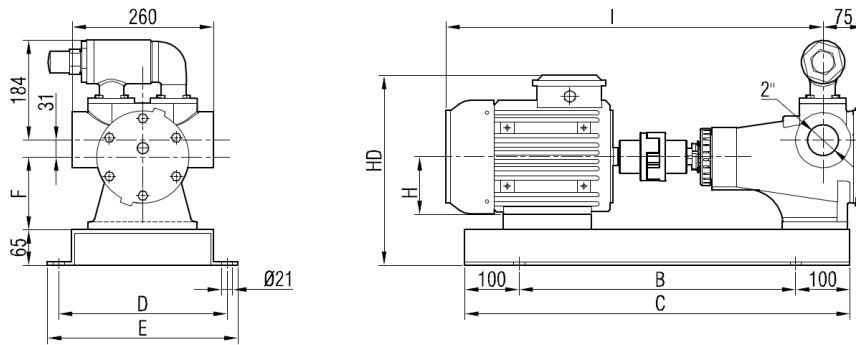


Pump Dimensions:

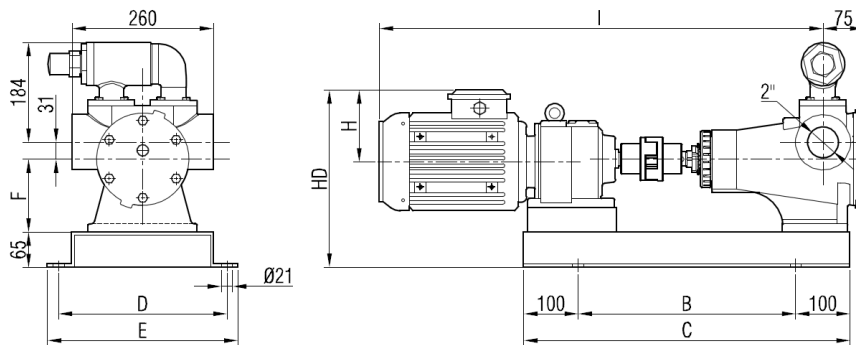




Coupling Dimensions - Motor and gearbox drive:



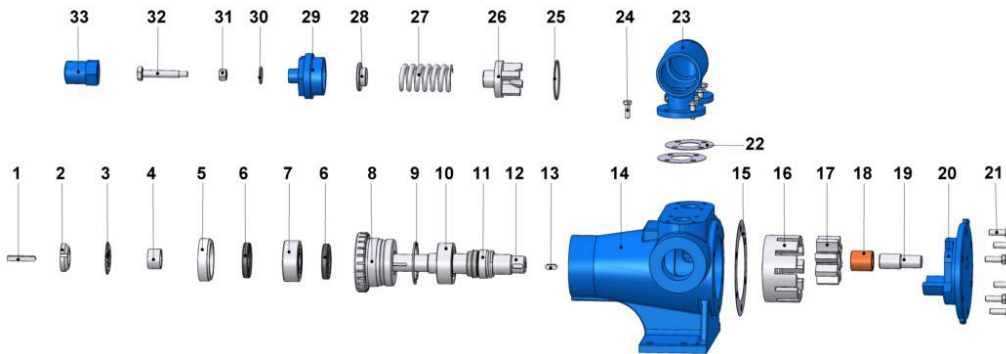
Motor Power & Speed			I	HD	H	B	C	D	E	F	Kg
2 HP / 1.5 kw	750 d/d (rpm)	MOTOR 112M	747	346	112	500	700	310	350	135	91
3 HP / 2.2 kw	900 d/d (rpm)										
3 HP / 2.2 kw	750 d/d (rpm)	MOTOR 132S	792	368	132	600	800	310	350	135	98
4 HP / 3 kw	900 d/d (rpm)										99
4 HP / 3 kw	750 d/d (rpm)	MOTOR 132M	830	368	132	600	800	310	350	135	106
5.5 HP / 4 kw	900 d/d (rpm)										110
7.5 HP / 5.5 kw	900 d/d (rpm)	MOTOR 160M	938	450	160	750	950	390	430	160	115
5.5 HP / 4 kw	750 d/d (rpm)										139



Motor Power & Speed			I	HD	H	B	C	D	E	F	Kg
2 HP / 1.5 kw	105/450 d/d (rpm)	IRAM52/90L	817	327	132	420	620	310	350	135	90
4 HP / 3 kw	280/600 d/d (rpm)	IRAM52/100L	846	336	97						
3 HP / 2.2 kw - 4 HP / 3 kw	50/234 - 65/570 d/d (rpm)	IRAM62/100L	875	330	141	500	700	310	350	135	107
5.5 HP / 4 kw	87/570 d/d (rpm)	IRAM62/112M	937	338	149						107
7.5 HP / 5.5 kw	75/540 d/d (rpm)	IRAM72/132S	1025	371	182	600	800			140	141

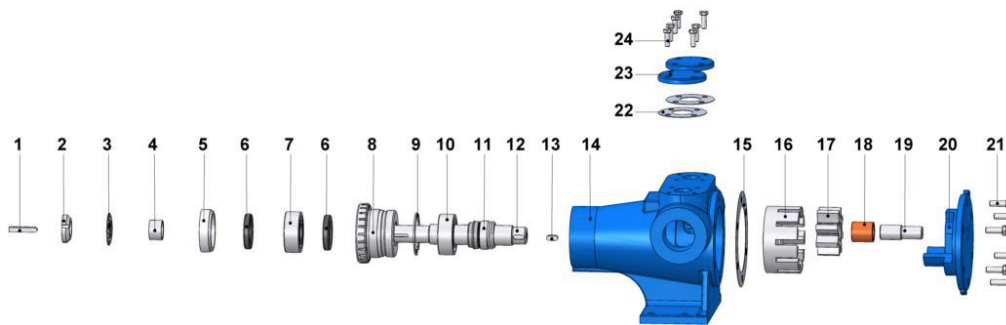


Spare Parts List - Sealed with mechanical seal, and pressure relief valve on cover:



No.	Part Name.	Qty.	No.	Part Name.	Qty.	No.	Part Name.	Qty.
1	Coupling Key 8x7x50 AB	1	12	Shaft	1	23	Pressure Relief Valve - Bypass	1
2	Lock Nut	1	13	Rotor Key 8x7x20 A	1	24	Hex Bolt M8x25	8
3	Lock Washer	1	14	Casing	1	25	Bypass O-Ring	1
4	Spacer	1	15	Cover Gasket	1	26	Valve	1
5	Pulley Cover	1	16	Rotor Gear	1	27	Spring	1
6	Lip Seal $\phi 35 \times \phi 62 \times 10$	2	17	Idler Gear	1	28	Washer	1
7	Ball Bearing (2306)	1	18	Idler Gear Bushing	1	29	Bypass Cover	1
8	Pulley	1	19	Cover Pin	1	30	Cap O-Ring	1
9	Internal Circlip ($\phi 72$)	1	20	Blind Cover	1	31	Nut M12	1
10	Bearing (3207)	1	21	Hex Bolt M10x30	6	32	Adjusting Screw M12x80	1
11	Mechanical Seal $\phi 35$	1	22	Bypass Gasket	1	33	Cap	1

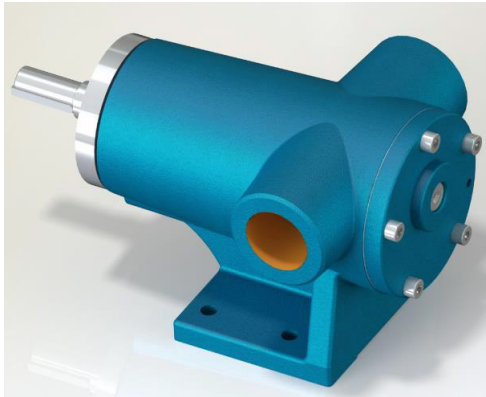
Spare Parts List - Sealed with mechanical seal, and with blind cover:



No.	Part Name.	Qty.	No.	Part Name.	Qty.	No.	Part Name.	Qty.
1	Coupling Key 8x7x50 AB	1	9	Internal Circlip ($\phi 72$)	1	17	Idler Gear	1
2	Lock Nut	1	10	Ball Bearing (3207)	1	18	Idler Gear Bushing	1
3	Lock Washer	1	11	Mechanical Seal $\phi 35$	1	19	Cover Pin	1
4	Spacer	1	12	Shaft	1	20	Blind Cover	1
5	Pulley Cover	1	13	Rotor Key 8x7x20 A	1	21	Hex Bolt M10x30	6
6	Lip Seal $\phi 35 \times \phi 62 \times 10$	2	14	Casing	1	22	Bypass Gasket	2
7	Ball Bearing (2306)	1	15	Cover Gasket	1	23	Pressure Relief Valve - Bypass	2
8	Pulley	1	16	Rotor Gear	1	24	Hex Bolt M8x25	8



YMKU 1½" Internal Eccentric Gear Pump



Performance:

Flow rate	6.7 m ³ /h
Pressure	1 - 12 bar
Temperature	0 - 200 °C
Speed	1400 d/d
Viscosity	100 - 7500 SSU

Technical Features:

- ✓ Internal eccentric gear pump
- ✓ 1½" threaded ports
- ✓ Compact design
- ✓ Reliable construction thanks to only two moving parts
- ✓ Various material options
- ✓ Available with external bypass and blind cover
- ✓ 230v, three phase 50/60hz motors available
- ✓ Motor and gearbox drive available
- ✓ Manufactured according to CE regulations

Applications:

- ✓ Fuel oil, diesel fuel and gas oil transfer
- ✓ Small scale thermal oil applications including Marlotherm, Duratherm, Paratherm, Multitherm, Mobiltherm and Dowtherm
- ✓ Lubrication applications
- ✓ Coolant transfer
- ✓ Any transfer of low to medium viscosity fluids with lubricating properties
- ✓ Not suitable for fluids containing abrasive particles

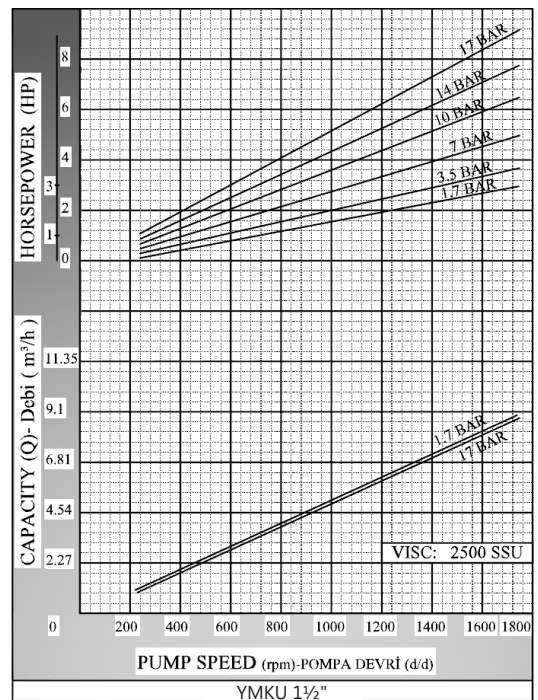
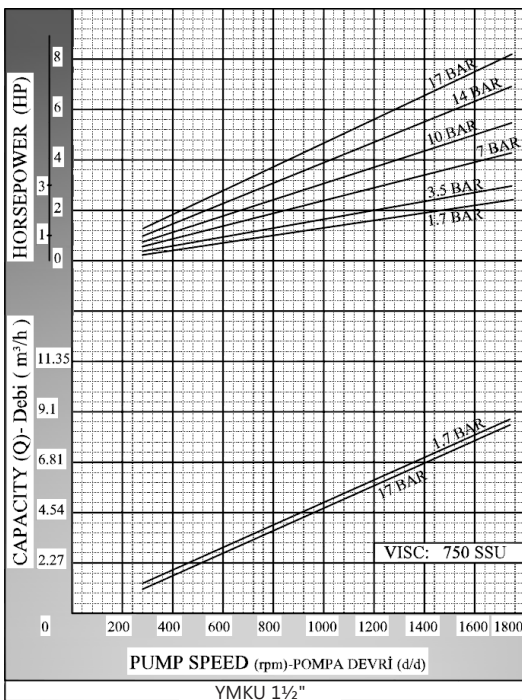
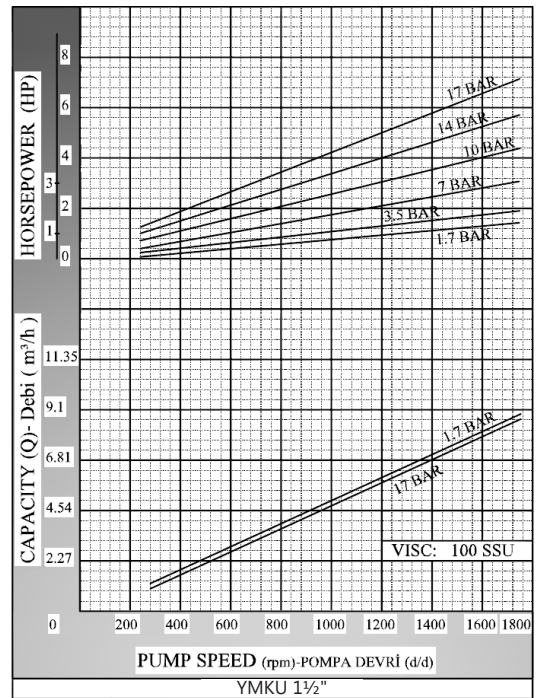
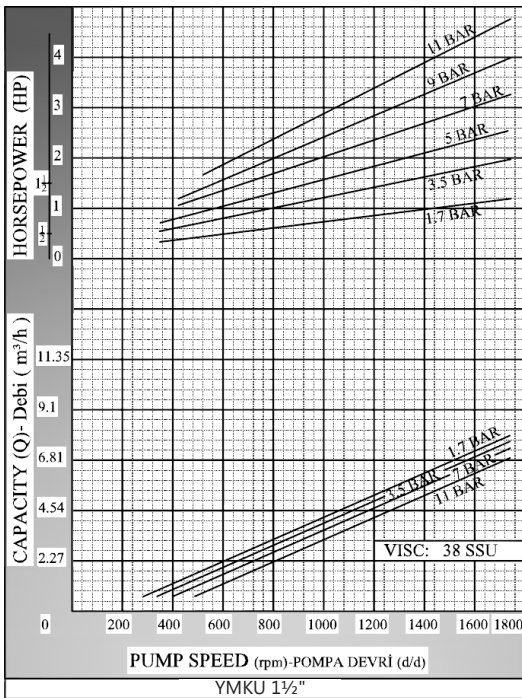
Material Options:

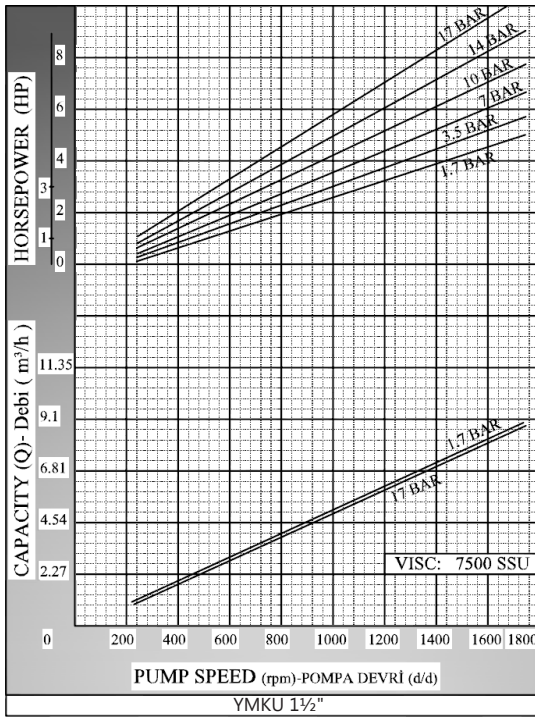
- ✓ Pump body, covers: Cast iron, steel cast
- ✓ Gears: Cast iron, steel cast, Spheroidal cast iron
- ✓ Bearings: Sbnz 12 bronze, carbon graphite, silicon carbide, hard metal coated steel
- ✓ Sealing: Lip seal

Capacity & Power Table						
Capacity (Q)	Speed (rpm)	Pressure				Viscosity
		3 Bar	6 Bar	9 Bar	12 Bar	
4.5	900	2 HP	3 HP	4 HP	4 HP	750 SSU
6.7	1400	2 HP	3 HP	4 HP	5.5 HP	100 SSU
Motor Powers		Motor Powers		Motor Powers		
2 HP	1400 d/d (rpm)	1.5 HP	750 d/d (rpm)	2 HP	750 d/d (rpm)	
Motor Body		2 HP	900 d/d (rpm)	3 HP	900 d/d (rpm)	
90		3 HP	1400 d/d (rpm)	5.5 HP	1400 d/d (rpm)	
		4 HP	1400 d/d (rpm)	Motor Body		
		Motor Body		112		
		100				

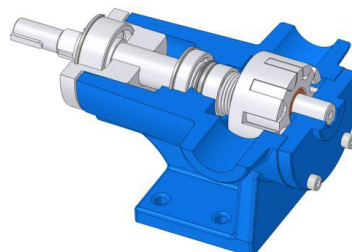
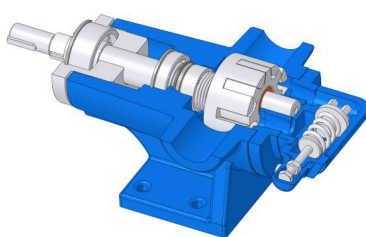
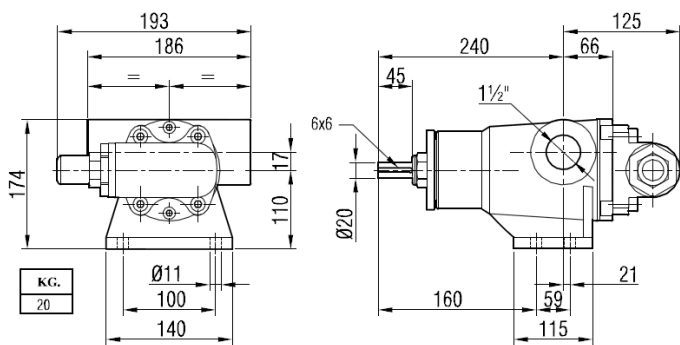
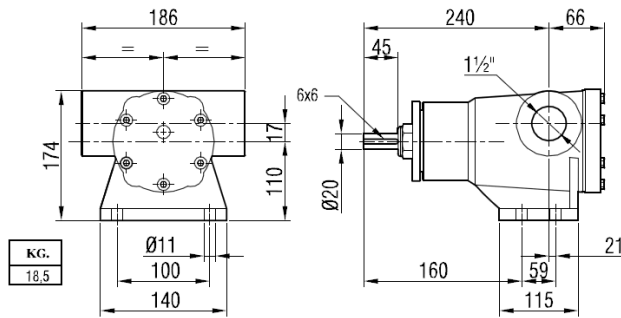


Pump Dimensions - Capacity Graphs:



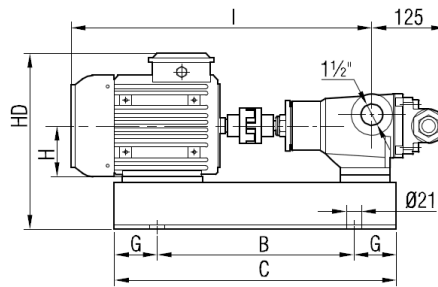
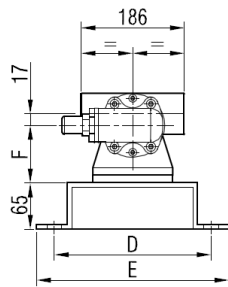


Pump Dimensions:

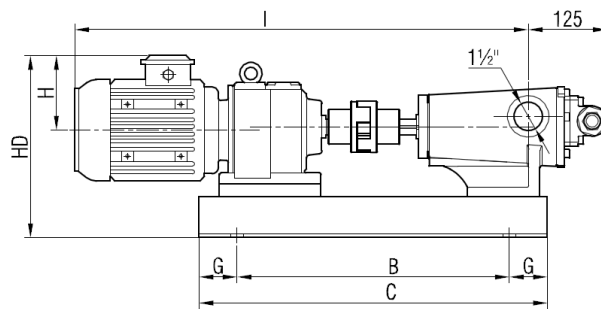
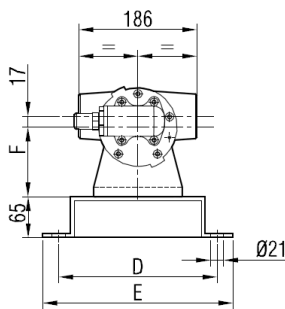




Coupling Dimensions - Motor and gearbox drive:



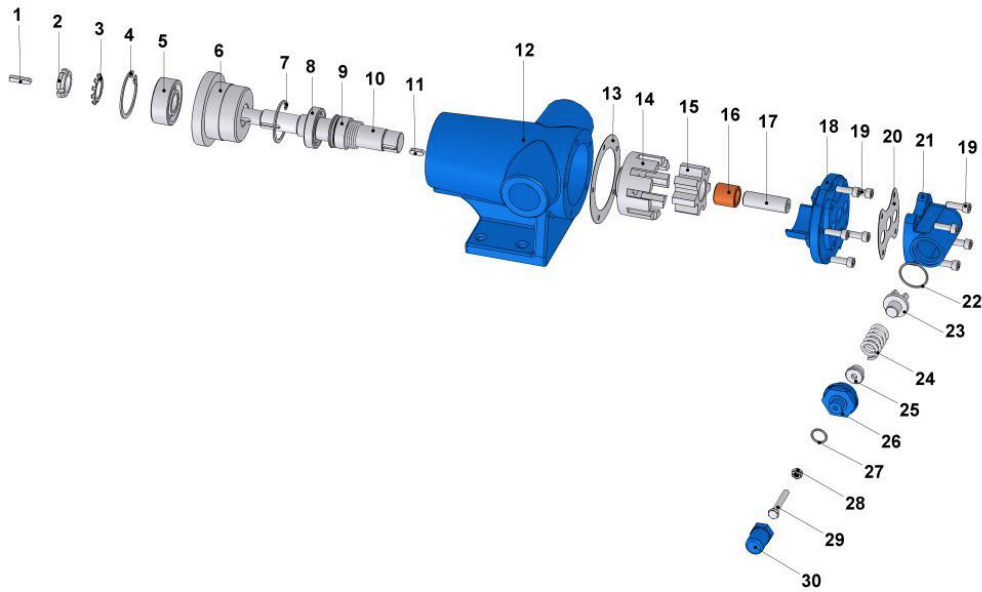
Motor Power & Speed			I	HD	H	B	C	D	E	F	G	Kg			
1 HP / 0.75 kw	1.5 HP / 1.1 kw		569	301	90	430	550	260	300	110	60	44			
900 d/d (rpm)	1400 d/d (rpm)											MOTOR 90S			
1.5 HP / 1.1 kw	2 HP / 1.5 kw		621	301	90	430	550	260	300	110	60	46			
900 d/d (rpm)	1400 d/d (rpm)											MOTOR 90L			
1.5 HP / 1.1 kw	2 HP / 1.5 kw	3-4 HP / 2.2-3 kw	667	310	100	420	620	310	350	110	100	58	58	56	59
750 d/d (rpm)	900 d/d (rpm)	1400 d/d (rpm)										MOTOR 100L			
2 HP / 1.5 kw	3 HP / 2.2 kw	5.5 HP / 4 kw	694	312	112	420	620	310	350	112	100	64	64	65	
750 d/d (rpm)	900 d/d (rpm)	1400 d/d (rpm)										MOTOR 112M			



Motor Power & Speed			I	HD	H	B	C	D	E	F	G	Kg
1 HP / 0.75 kw	40/240 d/d (rpm)	IRAM52/80M	708	288	118	430	550	260	300	110	60	57
1.5 HP / 1.1 kw	60/382 d/d (rpm)	IRAM52/90S	727	302	132							60
	30/104 d/d (rpm)	IRAM62/90S	778	301	132	60	76					
2 HP / 1.5 kw	30/197 d/d (rpm)	IRAM62/90L	803	301	132	60	78					

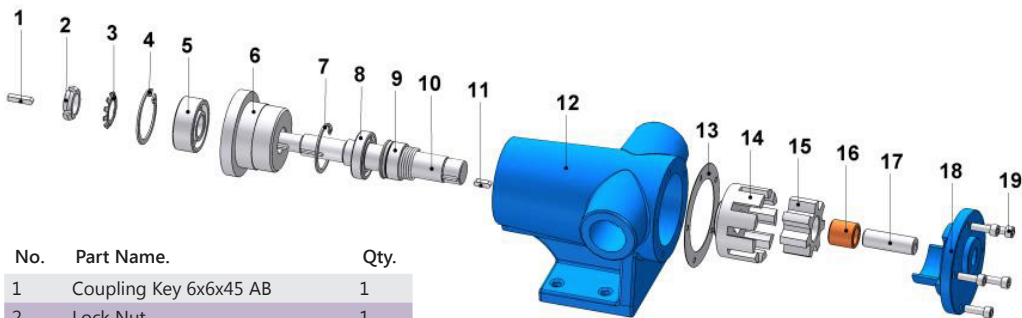


Spare Parts List - Sealed with mechanical seal, and pressure relief valve on cover:



No.	Part Name.	Qty.	No.	Part Name.	Qty.	No.	Part Name.	Qty.
1	Coupling Key 6x6x30 AB	1	11	Key 6x6x30 A	1	21	Pressure Relief Valve - Bypass	1
2	Lock Nut	1	12	Casing	1	22	Bypass O-Ring	1
3	Lock Washer	1	13	Cover Gasket	1	23	Valve	1
4	Pulley Internal Circlip (ø62)	1	14	Rotor Gear	1	24	Spring	1
5	Bearing (62305-2RS)	1	15	Idler Gear	1	25	Washer	1
6	Pulley	1	16	Idler Gear Bushing	1	26	Bypass Cover	1
7	Casing Internal Circlip (ø55)	1	17	Cover Pin	1	27	Cap O-Ring	1
8	Ball Bearing (6006-2RS)	1	18	Cover (w/ Bypass Inlets)	1	28	Nut M8	1
9	Mechanical Seal Ø30	1	19	Inbus Bolt M8x25	9	29	Adjusting Screw M8x55	1
10	Shaft	1	20	Relief Valve Gasket	1	30	Cap	1

Spare Parts List - Sealed with mechanical seal, and with blind cover:



No.	Part Name.	Qty.
1	Coupling Key 6x6x45 AB	1
2	Lock Nut	1
3	Lock Washer	1
4	Internal Circlip (ø62)	1
5	Ball Bearing (62305-2RS)	1
6	Pulley	1
7	Casing Internal Circlip (ø55)	1
8	Ball Bearing (6006-2RS)	1
9	Mechanical Seal Ø30	1
10	Shaft	1
11	Rotor Key 6x6x30 A	1
12	Casing	1
13	Cover Gasket	1
14	Rotor Gear	1
15	Idler Gear	1
16	Idler Gear Bushing	1
17	Cover Pin	1
18	Cover	1
19	Inbus Bolt M8x25	5