

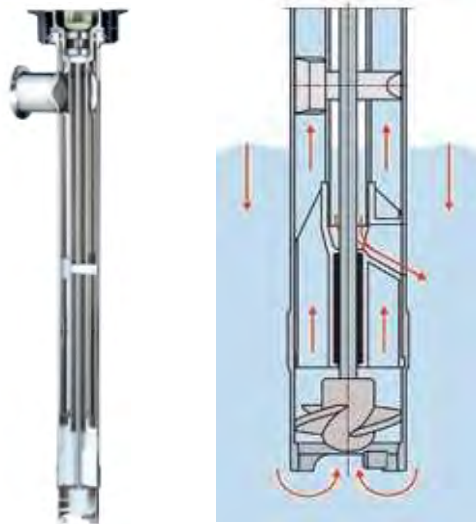
Technical Data Sheet

Drum pumps F/FP 427



More than just pumps

Drum pumps F/FP 427



Advantages/characteristics:

- ▶ Ideal as a hygienic pump
- ▶ Minimised dead spot areas
- ▶ No seal in liquid zone
- ▶ Can be easily dismantled into individual parts for cleaning
- ▶ Can be disassembled virtually without tools
- ▶ Radial shaft seal rings prevent vapours and liquid from penetrating into the coupling area
- ▶ Simultaneous storage of shaft and inner tube with plug-in bearing
- ▶ All parts that come into contact with the medium can be sterilized
- ▶ Also pumps solids-laden fluids, e.g. fruits with pulp, soups with spices



Technical data/type	F 427 S3	F 427 S4	FP 427 S FOOD	F 427 S 3A
Seal type	No seal in liquid zone			
Version	With impeller for max. flow rate			
Pressure-side connection	Thread G 1 1/4 A	Thread Rd 58 x 1/2	Clamp 1 1/2"	
Materials				
Pump	Stainless steel 316 Ti			
O-Ring ²⁾	FKM			
Shaft	Stainless steel			
Impeller	ETFE		Stainless steel	ETFE
Dimensions				
Outer tube diameter / Impeller diameter (mm)	43/38			
Standard immersion depth (mm)	700, 1 000, 1 200			
Other immersion depths / special lengths (mm) ³⁾	200 - 2 000			
Operating range				
Container	Drums, IBCs, tanks, canisters, hobbocks, mixing containers etc.			
Media temperature (°C)	100			
Ambient temperature (°C)	-20 to +40			
Weight Ø 43, ID 1 000 mm (kg)	2.9			
Certificates				
Food approvals	-		FDA EG 1935/2004 FDA CFR 21	3A-version
Silicone-free version	-			
Performance data¹⁾				
	Impeller			
Flow rate max. l/min.	240			
Delivery head max. mwc	13			
Viscosity max. mPas	1 000			

1) Depending on pump version, media and motor

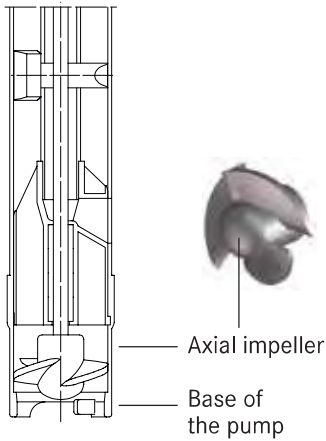
2) Other materials available on request

3) In gradations of 100 mm

Design, function and dimensions

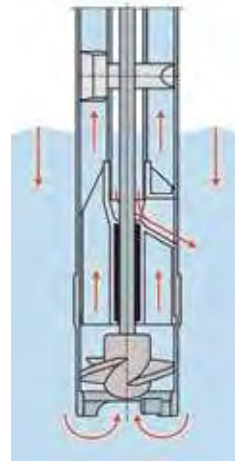
Drum pumps F/FP 427

Design:



F/FP 427 with bearing housing and axial impeller

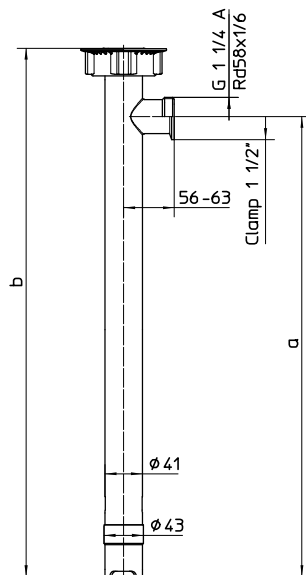
Function:



F/FP 427 with relief opening for optimum outflow of medium

Dimensions:

Drum pump F/FP 427



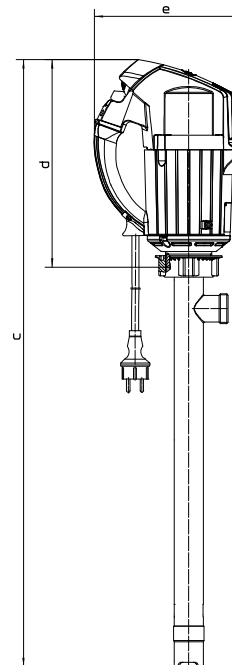
Standard immersion depth (ID)

Ø (mm)	ID (mm)	a (mm)	b (mm)
43	700	715	790
	1 000	1 015	1 090
	1 200	1 215	1 290

Other immersion depths (ID)

a = ID + 15 and b = ID + 90

Drum pump with motor



F/FP 427 with motor

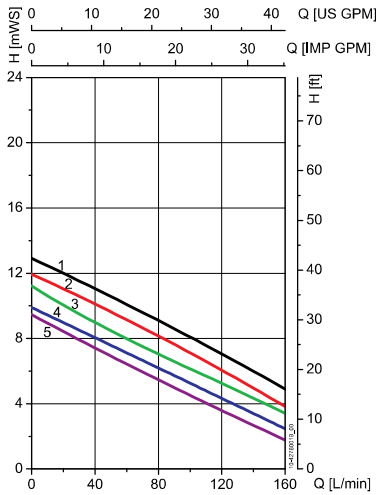
Motor type	c (mm)	d (mm)	e (mm)
FEM 4070	b + d - 16	207	186
F 457 (EL)		225	217
F 458 (-1, EL)		292	209
F 460 Ex (-1, EL)		292	209
FBM 4000 Ex		292	209
F 416 Ex		119	230
F 416-1 Ex		101	120
F 416-2 Ex		101	120

Performance diagrams¹⁾ & part numbers

Drum pumps F/FP 427

The performance diagram applies to the Ø 38 impeller and the indicated motors, for all pipe types respectively.

Axial impeller Ø 38



- 1) F 416 Ex, F 416-1 Ex, F 416-2 Ex (6 bar)
- 2) F 457, F 457 EL, F 458-1, F 460-1 Ex
- 3) FBM 4000 Ex
- 4) FEM 4070
- 5) F 458, F 458 EL, F 460 Ex, F 460 Ex EL

Part numbers:

Standard immersion depths									
Type	Material			Diameter (mm)		Part no.			
	Pump	Shaft	O-Ring	Ø outer tube	Ø impeller	700 mm	1 000 mm	1 200 mm	1 500 mm
F 427 S3, Connection thread G 1 ¼ A	Standard	S	FKM	43	38	10-427 20 307	10-427 20 310	10-427 20 312	10-427 20 315
F 427 S4, Connection thread Rd 58 x ½						10-427 20 407	10-427 20 410	10-427 20 412	
F 427 S5, Connection Clamp 1 ½"						10-427 20 507	10-427 20 510	10-427 20 512	
FP 427 S, Connection Clamp 1 ½"	FOOD					10-427 20 607	10-427 20 610	10-427 20 612	
F 427 S 3A, Connection Clamp 1 ½"	3A					10-427 20 207	10-427 20 210	10-427 20 212	

Other immersion depths/other O-rings/other connections on request

Hose connections						
with union nut G 1 ¼ and Rd 58 x ½ for standard versions and clamp 1 ½ for FOOD- and 3A-version						
Connection and/or connection thread	Material			Size		
	Connection	Union nut	Seal	DN 19	DN 25	DN 32
Standard G 1 ¼	Stainless steel (S) 316 Ti	Stainless steel	-	10-959 04 062	10-959 04 063	10-959 04 064
Milk tube screw fitting 58 x ½		-	-		10-959 04 115	
Clamp 1 ½, FOOD-version		-	FKM	10-959 04 171	10-959 04 169	
Clamp 1 ½, 3A-version		-	NBR	10-960 04 172	10-960 04 170	
		-	-	10-959 04 138		

1) Determined with water at 20 °C, measured values ± 10 % maximum flow rate with open discharge outlet

Accessories

Drum pumps F/FP 427

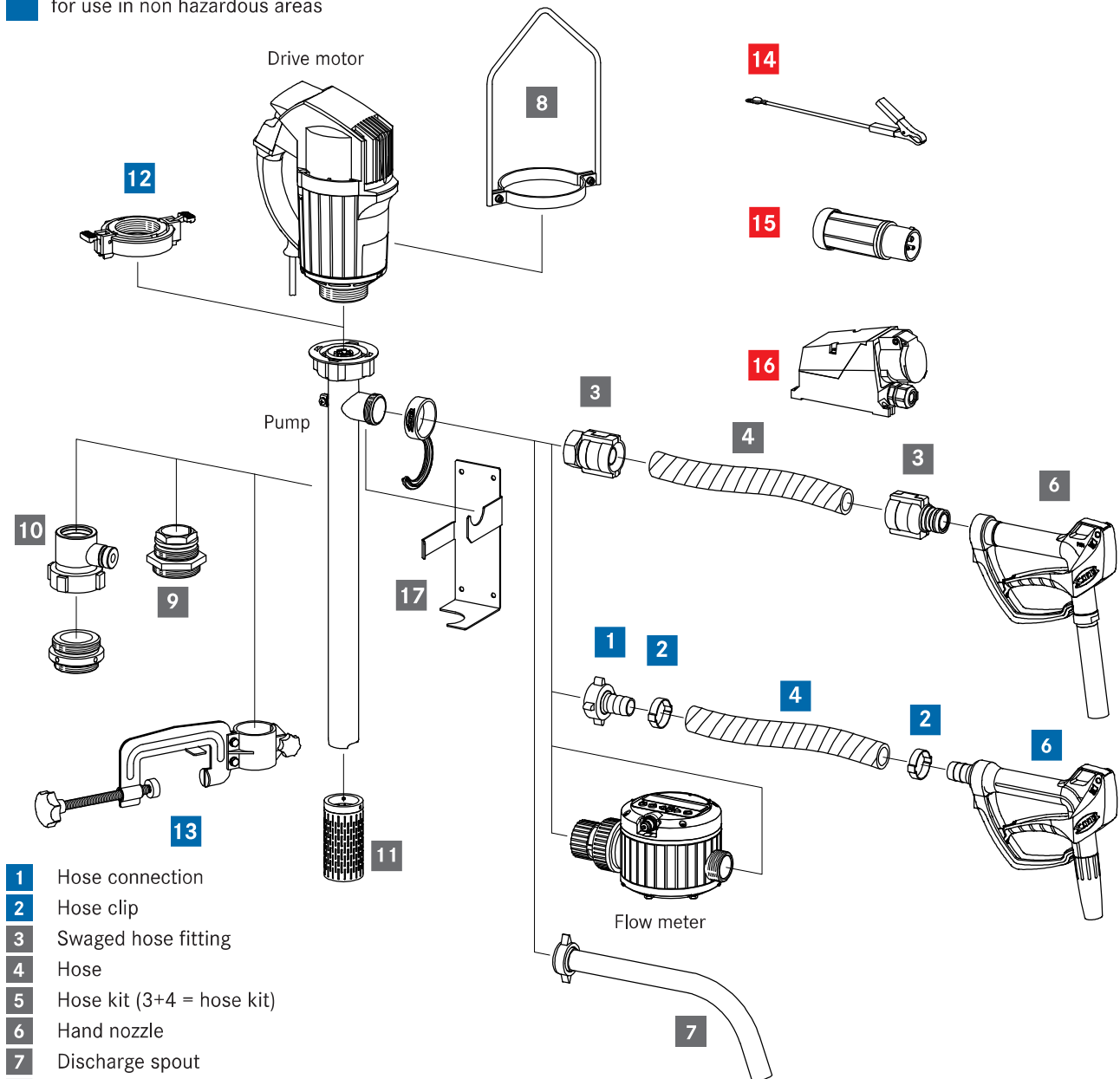
Accessories for drum pump F/FP 427

Compatible with drum pumps from the F/FP 427 series, we offer a wide selection of accessories, for example, compression glands, hoses, hand nozzles. More information can be found in the FLUX accessory brochure, in the price list or on our homepage: www.flux-pumps.com.

■ for use in hazardous areas

■ for use in hazardous and non hazardous areas

■ for use in non hazardous areas



- 1 Hose connection
- 2 Hose clip
- 3 Swaged hose fitting
- 4 Hose
- 5 Hose kit (3+4 = hose kit)
- 6 Hand nozzle
- 7 Discharge spout
- 8 Carrying handle
- 9 Compression gland
- 10 Fume gland
- 11 Suction strainer
- 12 Quick action coupling
- 13 Attachment clamp
- 14 Earth (ground) wire
- 15 Explosion-proof plug
- 16 Explosion-proof socket
- 17 Wall bracket

FLUX-GERÄTE GMBH
 Talweg 12 · D-75433 Maulbronn
 Tel +49 (0)7043 101-0 · Fax +49 (0)7043 101-444
info@flux-pumpen.de · www.flux-pumps.com