

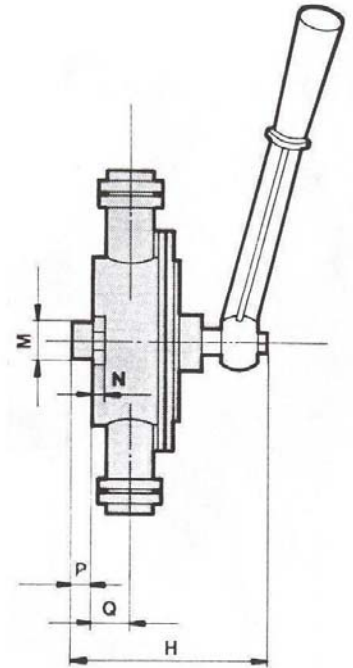
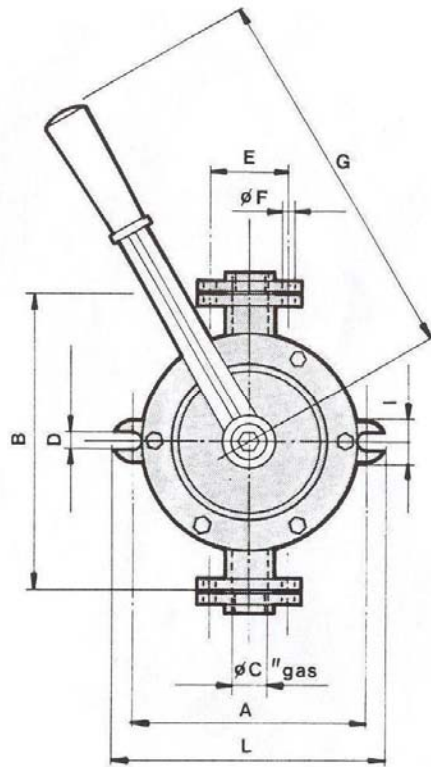


# CASTLE PUMPS LTD

## EXCELSIOR SEMI ROTARY HAND PUMPS



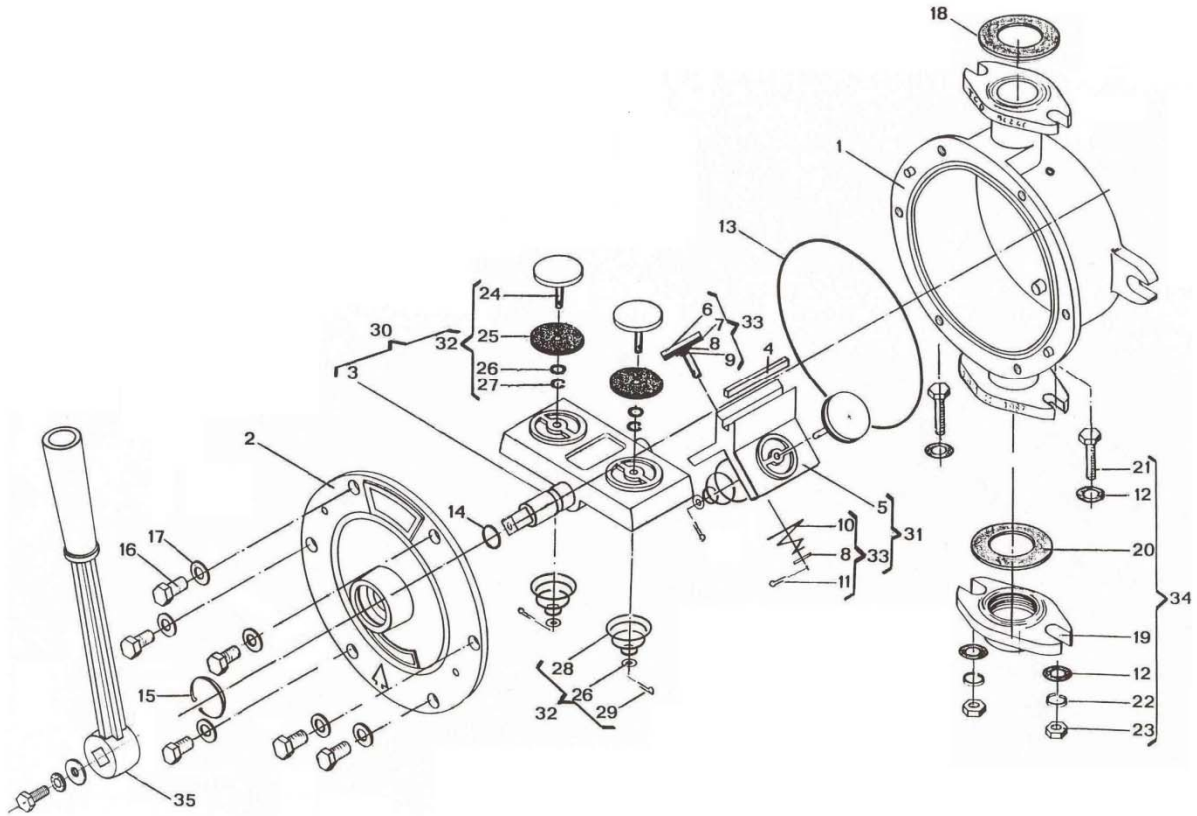
- Self-Priming, Double Acting & Reciprocating Action.
- Cast Iron Body & Cover with Bronze Internals or Full Bronze (E00 - E5)
- GB Versions with NBR Seals
- GB-be Versions with Viton Seals (E0-E3)
- Max Delivery Head: 25 m.
- Supplied with Removable Flanges w/ Screwed Centers. E00 w/out



TYPE	FLOW (L/MIN)	SUCTION LIFT	A	B	C	D	E	F	G	H	I	L	M	N	P	Q	KG.
E00	14	7 m	84	120	3/8"	7	37	7	170	102	22	102	23	7	12	24	2
E0	16	8.5 m	125	175	1/2"	9	43	7	260	136	26	148	25	11	16	28	3.1
E1	20	8.5 m	150	205	3/4"	11	55	7	260	136	32	176	25	15	16	29	4.3
E2	30	8.5 m	170	230	1"	12	64	9	260	138	32	198	25	15	16	32	5.5
E3	40	8.5 m	190	260	1 1/4"	12	74	9	320	166	35	222	30	15	19	35	8.3
E4	55	7 m	220	280	1 1/4"	12	74	9	410	185	38	250	33	18	25	42	10
E5	80	7 m	250	320	1 1/2"	15	85	9	410	185	45	287	34	20	25	43	13.8
E7	105	7 m	300	390	2"	18	106	14	410	230	50	335	45	22	32	48	30



# CASTLE PUMPS LTD



POS.	DESCRIPTION	POS.	DESCRIPTION
1	Casing	19	Connection Flange
2	Cover	20	Inferior Flange Gasket
3	Wing w/ Shaft	21	Flange + Counter Flange Screws
4	PTFE Gasket	22	Seeger Ring
5	Vee Static Part	23	Counter Flange Kit
6	Vee Valve	24	Wing Valve
7	Vee Gasket	25	Wing Valve Gasket
8	Vee Washer	26	Wing Washer
9	Vee Seeger Ring	27	Wing Seeger Ring
10	Vee Spring	28	Wing Spring
11	Vee Small Pin	29	Wing Small Pin
12	Counter Flange Washer	30	Wing w/ Valve Set
13	Body O-Ring	31	Vee w/ Valve Set
14	Shaft O-Ring	32	Wing Valve Complete
15	Cover Seeger Ring	33	Vee Valve Complete
16	Cover Set Screw	34	Counter Flange Connection
17	Cover Washer	35	Handle
18	Superior Flange Gasket		