

FLUX Centrifugal Immersion Pump F 620 S TR and F 640 PP TR

for dry installation for horizontal use

Typical applications

Transferring low flammability liquids up to a viscosity of 2 500 mPas (cP) from containers or tanks, either open topped or closed. The pump is used either horizontally mounted onto a base plate or fixed vertically.

Construction features

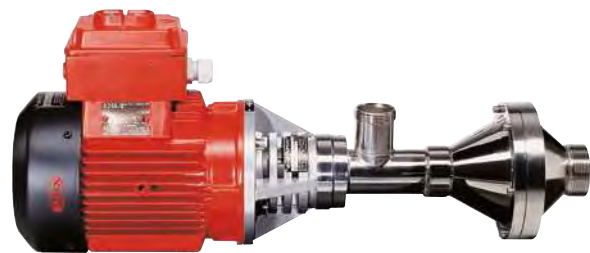
Centrifugal pump in horizontal version in stainless steel or polypropylene, consisting of an inner tube and outer tube.

The centrifugal impeller in the pump housing is driven by the motor via the drive shaft. The drive shaft is supported by intermediate bearings within inner tube, a mechanical seal separates the liquid from the bearings and upper shaft. The PP version has a steel cored PP inner tube. This construction provides the ultimate in stability, preventing elongation of the plastic at high temperatures and ensures the maximum integrity of the mechanical seal.

With an open conical impeller or a closed centrifugal impeller (Z)

Depending on the model, suction and discharge sides are fitted with threaded or flanged connections.

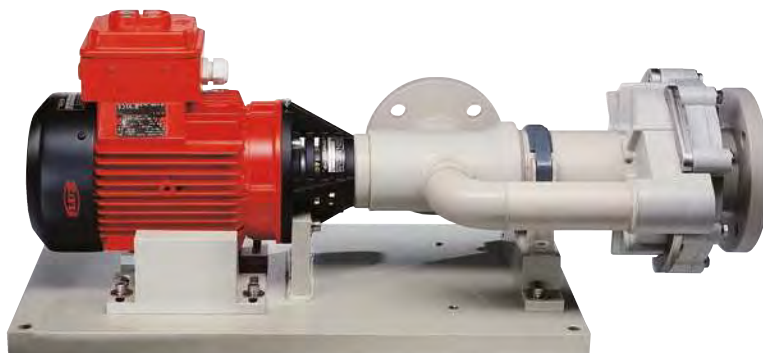
Three-phase motors in differing kW-ratings are available as a matched power unit. Connection to the pump is made via a flexible coupling.



F 620 S-30 TR



F 640 PP-30 TR



F 640 PP-230 TR with base plate

Centrifugal Immersion Pump F 620 S TR in stainless steel,

without drive motor

Type/Size	F 620 S-30 TR
Delivery rate Q max.	23 m ³ /h
Delivery head H max.	12 mwc
Viscosity max.	2 500 mPas
Temperature max.	100 °C
Seal type	mechanical seal in ceramic oxide, o-rings in FKM
Material	shaft in stainless steel 316 Ti, seals in FKM
Impeller	open conical impeller in polypropylene (version in stainless steel on request)
Suction side	thread G 2 A
Discharge side	thread G 1½ A
Part No.	10-620 25 502

Accessoires	Part No.
Base plate in polypropylene	10-001 15 024
Hose connection in stainless steel, complete with nut G 1½	
for hose inside diameter DN 25	10-959 04 002
for hose inside diameter DN 32	10-959 04 003
for hose inside diameter DN 38	10-959 04 004

Centrifugal Immersion Pump F 640 PP TR in polypropylene,

without drive motor

Type/Size	F 640 PP-30 TR	
Delivery rate Q max.	29 m ³ /h	
Delivery head H max.	10 mwc	
Viscosity max.	2 500 mPas	
Temperature max.	50 °C	
Seal type	mechanical seal in ceramic oxide /SiC, o-rings in FKM	
Material	shaft in Hastelloy C, seals in FKM	
Impeller	open conical impeller in PP	
Suction side	thread G 2 A	flange DN 65, PN 10
Discharge side	thread G 2½ A	flange DN 50, PN 10
Part No.	10-640 41 601	10-640 41 600

Centrifugal Immersion Pump F 640 PP TR in polypropylene,

without drive motor

Type/Size	F 640 PP-230 TR
Delivery rate Q max.	44 m ³ /h
Delivery head H max.	33 mwc
Viscosity max.	150 mPas
Temperature max.	60 °C
Seal type	mechanical seal in ceramic oxide/SiC, o-rings in FKM
Material	shaft in Hastelloy C, seals in FKM
Impeller	Ø 100 - 160 mm in PP
Suction side	flange DN 65, PN 10; outside Ø 185 mm, p.c.Ø 145 mm, 4 bores Ø 18 mm each
Discharge side	flange DN 50, PN 10; outside Ø 165 mm, p.c.Ø 125 mm, 4 bores Ø 18 mm each
Part No.	10-640 41 300

Accessories	Part No.
Base plate in polypropylene for F 640 PP-30 TR and F 640 PP-230 TR	10-001 15 023
Hose connection in polypropylene, complete with nut G 2¼	
for hose inside diameter DN 32	10-959 04 098
for hose inside diameter DN 38	10-959 04 099
for hose inside diameter DN 50	10-959 04 100

Scope of supply

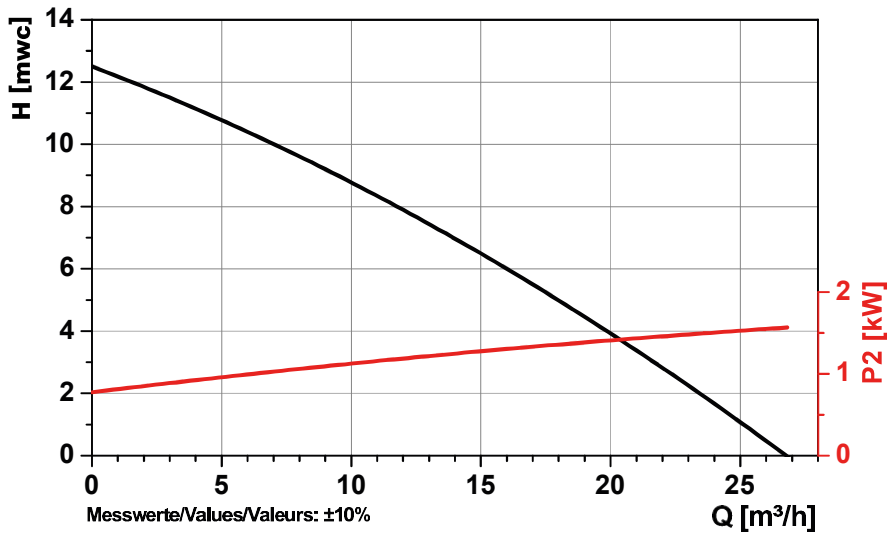
A complete centrifugal immersion pump for dry installation consists of drive motor, pump and base plate. Weight per pump including base plate: 9 - 50 kg depending on pump size and motor kW.

FLUX Centrifugal Immersion Pump F 620 S TR and F 640 PP TR

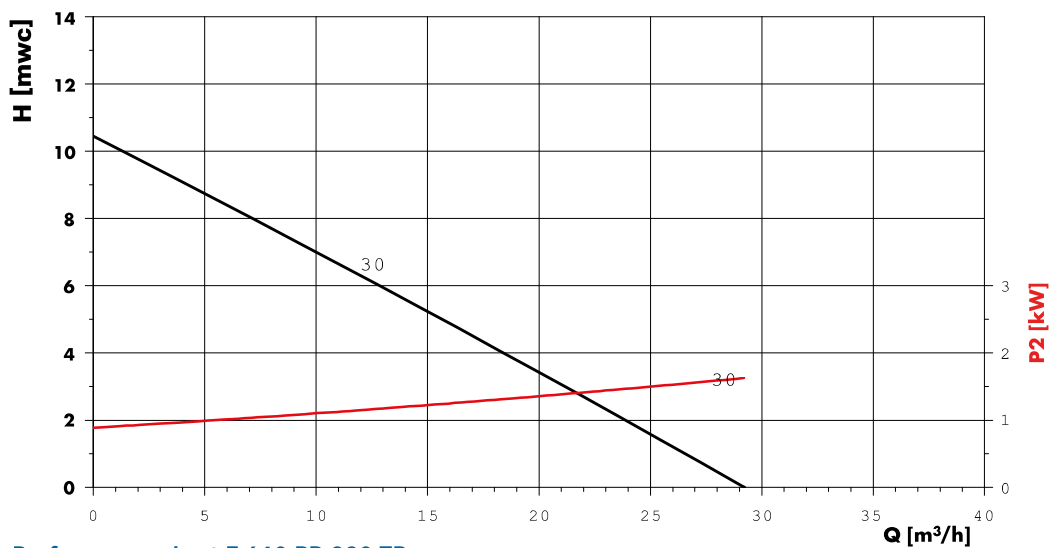
for dry installation for horizontal use

Technical data

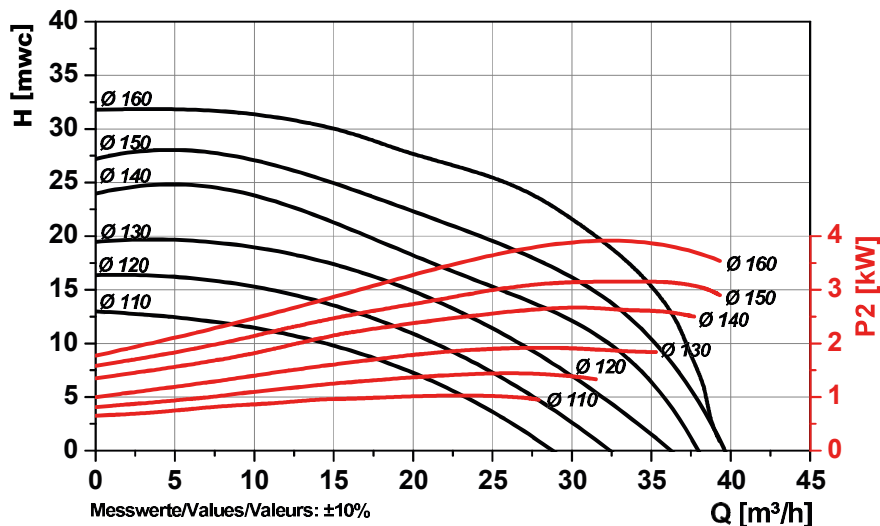
Performance chart F 620 S-30 TR



Performance chart F 640 PP-30 TR



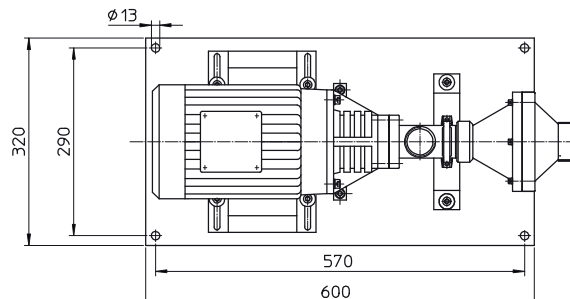
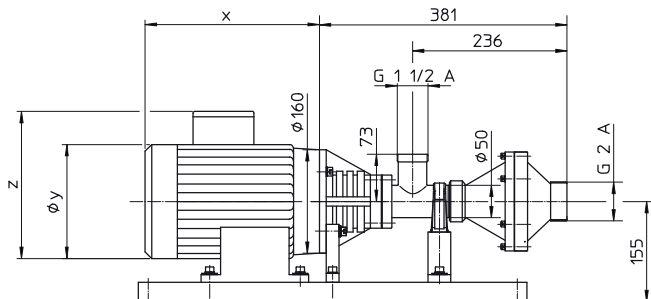
Performance chart F 640 PP-230 TR



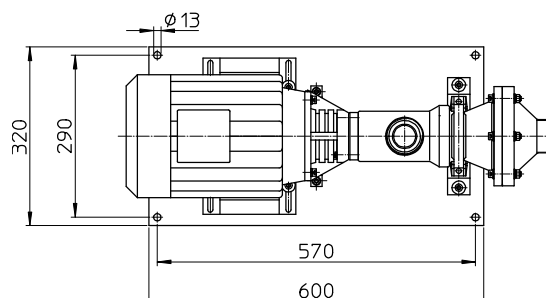
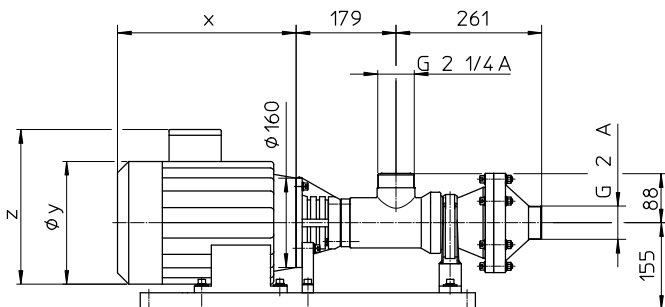
Measured values $\pm 10\%$ determined with water (20 °C). Nominal speed $n = 2\,850$ rpm
 In determining the absorbed kW of the motor, multiply the absorbed kW shown in the above diagram with the specific gravity of the liquid to be pumped.

Technical data

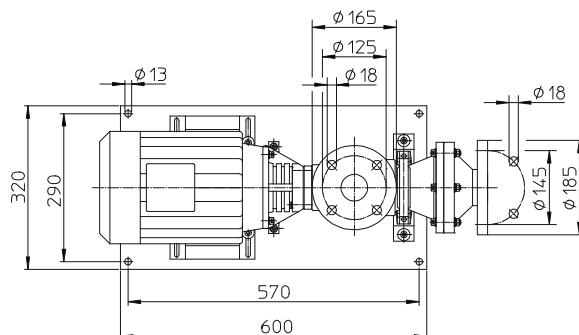
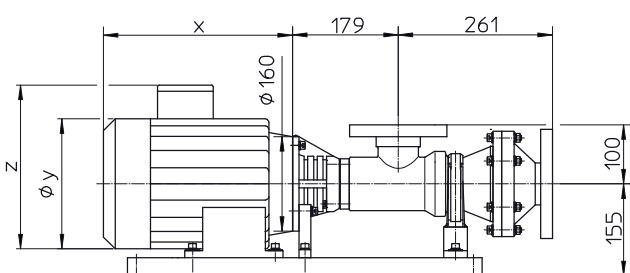
Dimensions [mm] F 620 S-30 TR



Dimensions [mm] F 640 PP-30 TR with thread connection



Dimensions [mm] F 640 PP-30 TR with flange connection



Dimensions [mm] F 640 PP-230 TR

